



Small Form-Factor Ethernet Switches and Breakout Cables

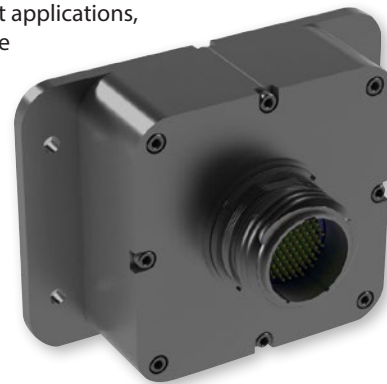
PRODUCT SELECTION GUIDE



visit glenair.com for detailed product datasheets

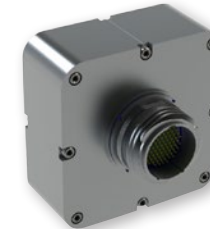
SMALL FORM-FACTOR Ethernet Switches and Breakout Cables

Glenair unmanaged Ethernet switches are layer 2 switches with Auto negotiation and Auto MDI / MDIX circuitry that enables port expansion with IEEE-802.3U 10/100/1000Base-T Ethernet ports. Developed for use in harsh environment applications, the electronics are incorporated into a panel-mountable housing that is sealed against liquid and solid contaminants and designed for shock and vibration resistance. Standard connector interfaces include high-performance size- and weight-saving Glenair Series 805 Mighty Mouse jam nut receptacles and M28876 type fiber-optic connectors.

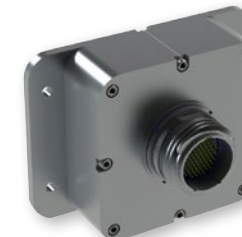


- Unmanaged—plug and play operation—no configuration required
- Jumbo frame support in all speeds (10/100/1000 Mbps)
- Operating temperature range: -40°C to +85°C
- Standard ultraminiature Mighty Mouse electrical and M28876 type fiber optic connector interfaces
- Experienced opto-electronic engineering services available for special connector and form-factor configurations
- Breakout cables with industry-standard connector interfaces available

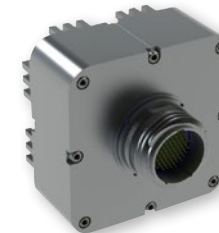
052-101 7-PORT UNMANAGED ETHERNET SWITCH



Form 1 (no flanges)



Form 2 (with flanges)



Form 3 (heat sink)

- 7 copper (10/100/1000 Mbps) Ethernet ports per IEEE 802.3:2005
- Non-Blocking switch fabric allows 1000 Mbps data rate on all 7 ports simultaneously
- Cable link distances up to 100 Meters (EIA/TIA Cat-5E)
- Full duplex flow control per IEEE Std 802.3X and half duplex back pressure, symmetric and asymmetric
- Shock, vibration and immersion resistant per MIL-STD-810F
- Auto sensing of half or full duplex operation
- Mighty Mouse Series 805 shell is water-tight to MIL-STD-810 when mated
- 3 form-factors available

050-118 5-PORT UNMANAGED ETHERNET SWITCH

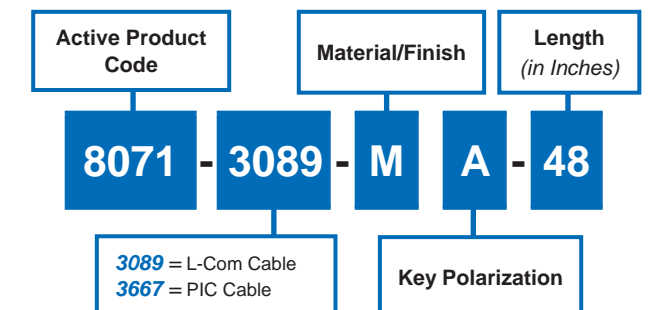


- 1 PORT : 10/100/1000 BASE-T consistent with IEEE 802.3
- 4 PORTS: 1000BASE-LX (IEEE 802.3)
- Non-blocking switch fabric allows 1000 Mbps on all ports
- Material/Plating: Aluminum with Cadmium Olive Drab over electroless Nickel (500 hours salt spray plating)
- 6 Status LEDs to Denote: (Power, Ethernet activity with one LED for each of the 5 ports)
- 4 M28876 type fiber-optic connectors
- Mighty Mouse ultraminiature electrical connector interface
- IP67 in mated condition

BREAKOUT CABLES FOR 7-PORT ETHERNET SWITCH



How To Order



F