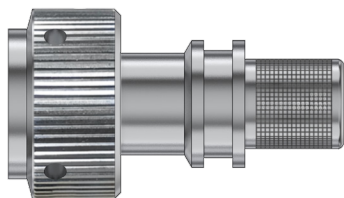


Series 44 Banding Backshells

for AS50151 Crimp, M26482 Series II, M83723 Series III, AS95234

447A*531 Banding Backshell, Shrink Boot, Spanner Nut

Self-Locking



Adapter Code **A**

AS50151 crimp, AS95234, MIL-DTL-26482 Ser. II, MIL-DTL-83723 Ser. III

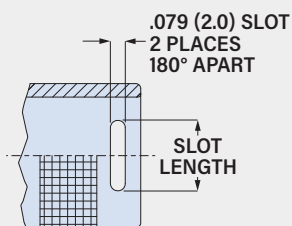
TABLE 1: ENTRY SIZE

Entry Size	±.015 (0.4) in	±.015 (0.4) mm	±.015 (0.4) in	±.015 (0.4) mm	Shell Sizes
03	.185	4.7	.303	7.7	480 12.2 08-14
04	.252	6.4	.370	9.4	.551 14.0 08-16
05	.311	7.9	.433	11.0	.610 15.5 08-20
06	.374	9.5	.496	12.6	.673 17.1 10-22
07	.437	11.1	.555	14.1	.736 18.7 10-24
08	.500	12.7	.618	15.7	.800 20.3 12-24
10	.626	15.9	.744	18.9	.925 23.5 14-24
12	.752	19.1	.866	22.0	1.051 26.7 16-24
14	.874	22.2	.992	25.2	1.173 29.8 20-24
16	1.004	25.5	1.118	28.4	1.300 33.0 22-24
18	1.126	28.6	1.240	31.5	1.425 36.2 24
20	1.252	31.8	1.366	34.7	1.551 39.4 24

TABLE 2: LENGTH CODE

Length Code	±.015 (0.4) in	±.015 (0.4) mm	K Max in	K Max mm	L Max in	L Max mm
A	.291	7.4	1.035	26.3	1.362	34.6
B	.606	15.4	1.350	34.3	1.677	42.6
C	.803	20.4	1.547	39.3	1.874	47.6
D	1.197	30.4	1.941	49.3	2.768	57.6

FIGURE 1: SLOT OPTION (L)



Entry Size	Slot Length in	Slot Length mm
03, 04, 05	.157	4.0
06, 07, 08	.276	7.0
10, 12	.433	11.0
14, 16	.472	12.0
18, 20	.551	14.0

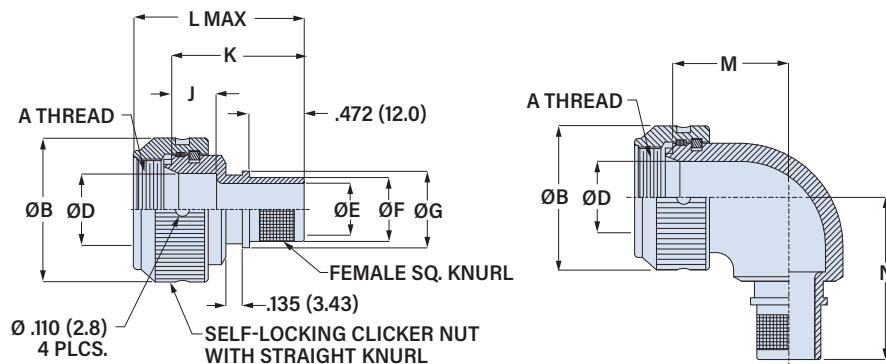
Self-locking. Impact resistant coupling nut. 447A*531 banding backshell fits AS50151 crimp (MS3450), AS95234, MIL-DTL-26482 Series II, MIL-DTL-83723 Series III and EN2997 connectors. Impact resistant coupling nut has 2.8 mm spanner wrench holes. Anti-decoupling mechanism provides audible detented coupling and prevents backoff under high vibration. Attach shielding and overbraid sleeving to backshell with band strap (not supplied). Shrink boot (not supplied) adds strain relief and environmental protection. Aluminum or stainless steel with thermoplastic detent spring and SST retainer ring.

PART NUMBER

447AS531	ZI	18	10	B	L	-157
Base P/N	Base Part No.	Profile				
	447AS531	S Straight				
	447AJ531	J 90°				
Material/Finish	M Alum/ Electroless Nickel MT Alum/ Nickel-PTFE NF Alum/ Olive Drab Cadmium ZR Alum/ Black Zinc-Nickel TZ Alum/ Tin-Zinc ZI SST/ Passivated					
Shell Size	08 10 12 14 16 18 20 22 24					
Entry Size	See Table 1					
Length	Applies to Profile S only. See Table 2. A B C D					
Slot	Omit if not required. See Figure 1. L Slots for Individual Shields					
Teflon Coating	Omit if not required. -157 Teflon Coating on Inside Surface					

S Straight

J 90°



Shell Size	A Thread Class 2B	ØB Max in	ØB Max mm	ØD Max in	ØD Max mm	M Max in	M Max mm	N Max in	N Max mm	Max Entry Size
08	0.500-20 UNF	.885	22.5	.270	6.86	.583	14.8	1.222	31.1	05
10	0.625-24 UNEF	1.010	25.7	.375	9.53	.654	16.6	1.347	34.2	07
12	0.750-20 UNEF	1.135	28.8	.511	12.98	.713	18.1	1.494	38.0	08
14	0.875-20 UNEF	1.260	32.0	.585	14.86	.736	18.7	1.561	39.7	10
16	1.000-20 UNEF	1.385	35.2	.710	18.03	.799	20.3	1.624	41.3	12
18	1.0625-18 UNEF	1.510	38.6	.789	20.04	.839	21.3	1.722	43.8	12
20	1.1875-18 UNEF	1.635	41.5	.914	23.22	.898	22.8	1.847	46.9	14
22	1.3125-18 UNEF	1.760	44.7	1.039	26.39	.961	24.4	1.972	50.1	16
24	1.4375-18 UNEF	1.885	47.9	1.154	29.31	1.027	26.1	2.097	53.3	20