

ADVANCED
PERFORMANCE
WIRE MANAGEMENT
SOLUTIONS

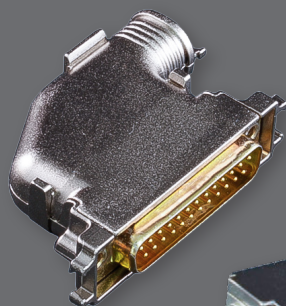
Composite

Innovative
Rectangular
Backshells and
Connector Accessories



Proven-performance backshells and accessories for rectangular connectors

- All forms of rectangular environmental, mechanical and EMC backshells
- Straight, 45° and 90° cable routing
- High-temp composite thermoplastic and metal shell versions
- To fit all current and legacy rectangular connectors
- Innovative split-shell versions for easy access to wire terminations
- Equally large range of protective covers and caps
- Thousands of part numbers in stock and ready for immediate shipment



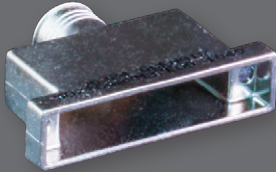
QWIKSNAP™

Glenair has developed an extensive range of lightweight Split-Shell backshells that completely eliminate assembly hardware in rectangular backshells. The Glenair QwikSnap™ series utilizes innovative composite spring latch technology to reduce weight, FOD, and accelerate assembly.



The world's largest *tooled* selection

MICRO-D AND NANOMINIATURE BACKSHELLS AND CONNECTOR ACCESSORIES



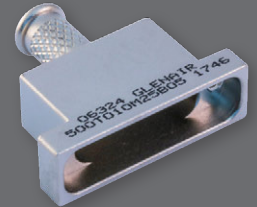
Composite Micro-D banding backshell



Plastic and metal covers for unmated environmental protection

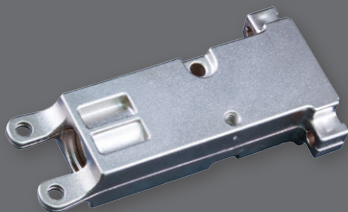


Micro-D backshell with elliptical banding platform

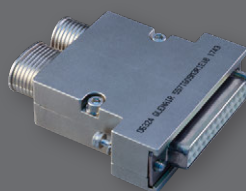


Metal Micro-D banding backshell

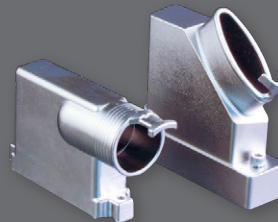
M24308 D-SUB SOLUTIONS: HIGH PERFORMANCE, RUGGEDIZED D-SUBMINIATURE PRODUCTS



Split-shell D-subminiature composite backshell



Split-shell M24308 dual-banding backshell



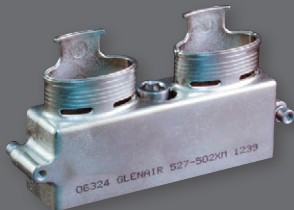
Composite D-subminiature backshells



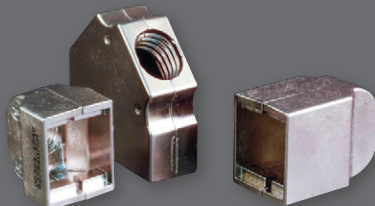
Flex-D Composite M24308 Backshell

LARGER FORM FACTOR RECTANGULAR BACKSHELLS

EPX® and EPXB® are registered trademarks of Radiall



Composite EMI/RFI banding backshell for EPXB® connectors



Composite EN4165 fiber optic/electrical backshells



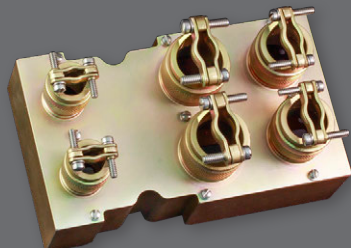
Backshells for EPX® series connectors



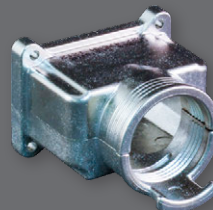
ARINC series backshells



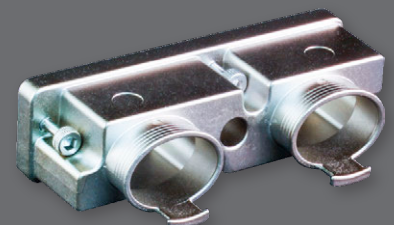
Composite airframe banding backshell



ARINC series backshell with individual wire bundle strain relief



MIL-C-81659



Special Quadrax connector backshell