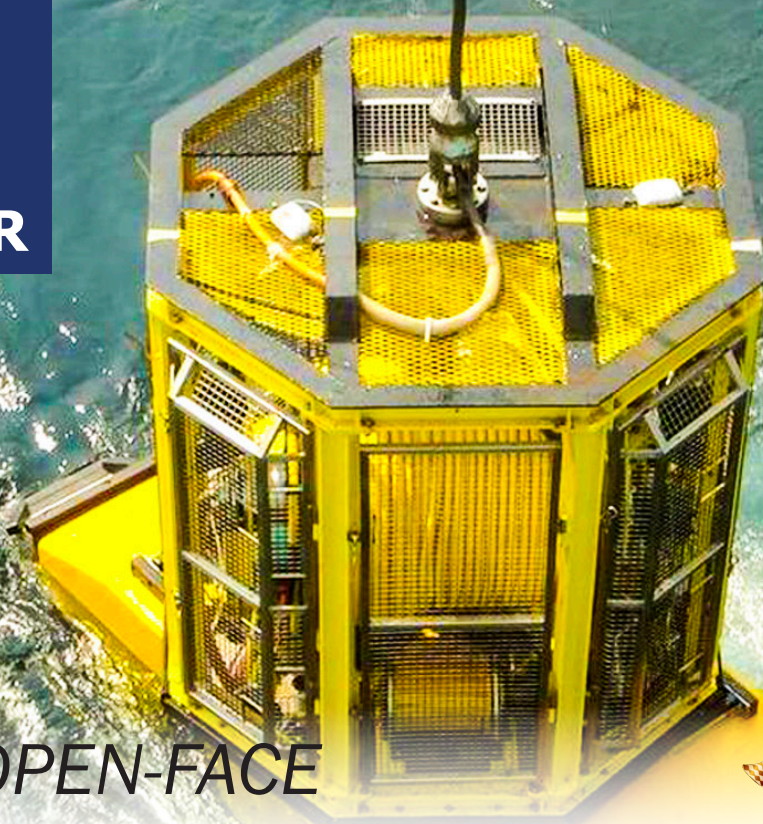




**DEEP
WATER**

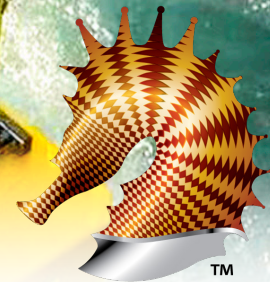


10K PSI OPEN-FACE SeaKing™ 700 Dry-Mate Underwater Connectors

10K PSI / 700 Bar / 7000m open-face or mated, dual O-ring equipped, high-density, high-voltage, fiber optic and hybrid electrical/optical subsea connectors

SeaKing is an innovative underwater connector series that eliminates a broad range of mechanical design weaknesses found in many of today's high-pressure subsea connector families. From its double O-ring seals and retractable engaging nut, to its multi-keyed mating interface, the SeaKing underwater connector represents a far more reliable approach to subsea power and signal connectivity.

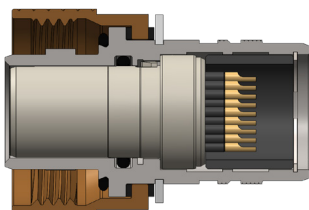
Ideally suited for deep water offshore oil & gas, military/defense, oceanographic research, and other harsh-environment subsea applications, the dry-mate connector series is built for optimal durability and reliability. Available in Glass to Metal Seal (GTMS, rated to 10KSI in both open face and mated conditions), and equipped with integrated dual O-ring seals, marine bronze coupling nuts, corrosion-resistant stainless steel shells and high-pressure contact inserts with gold-plated signal contacts, special RF and fiber optic solutions, the Series 700 SeaKing is today's most advanced high-density signal and standard-density power underwater connector.



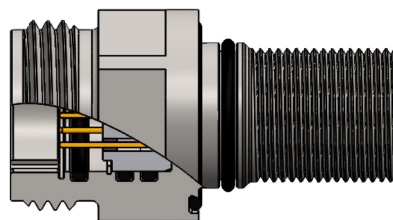
SeaKing
SEVEN HUNDRED

- High density, small form-factor connector
- Dual O-ring seals ensure high-pressure performance for every leak path
- Signal, power, RF and optical insert arrangements
- Stainless steel with anti-galling marine bronze engaging nut, or cathodic delamination-free PEEK
- Full-mate inspection ports
- Easy O-ring replacement
- Key and keyway polarization

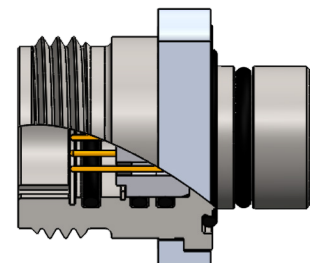
STANDARD CONFIGURATIONS



Cable Connector Plug (CCP)



Bulkhead Connector Receptacle (BCR)



Flange Connector Receptacle (FCR)



SERIES 700 10K PSI / 700 BAR / 7000 M SeaKing™ High-Pressure Subsea Connectors, Cables, and PBOF Assemblies

Key mechanical and environmental features



Sealing: The Series 700 SeaKing™ is the best sealed subsea connector on the market. All critical interfaces, including bulkhead seals, glass-to-metal insert seals, mating interface bore seals, and face seals are fully redundant ensuring 10K PSI protection, even in the event of a single-seal failure.

Mating: SeaKing™ utilizes a modified UNC (coarse) mating interface with added clearance to reduce bio-fouling and facilitate rapid-advance mating. The marine bronze engaging nut on the plug is equipped with wrench flats as well as knurling and is less susceptible to galling than standard steel engaging nuts. Polarized keys and keyways prevent both thread damage and mismatching.

Ease-of-Use: Multiple PBOF backshell indexing points, indexable flange FCRs, full-mate inspection ports, retractable engaging nuts, and other features make SeaKing™ the most user-friendly subsea connector on the market.

