

## El Ochito<sup>®</sup> Jumper Cable Mating Adapters

JUMPER MATING ADAPTERS



Pin Contact

Socket Contact

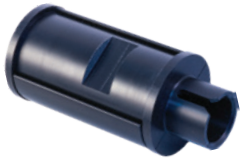
Safely test and mate El Ochito contacts prior to installing them into a connector. Ideal for testing dielectric withstanding voltage (DWV), insulation resistance (IR), and conducting continuity and performance checks during assembly of jumpers. Adapters are made of a rigid dielectric and composed of three individual components designed to safely protect against damage and misalignment.

*Note: these adapters are for testing Size 8 contacts only. Testing of other contact sizes (22, 20, 16, or 12) requires a mating connector.*

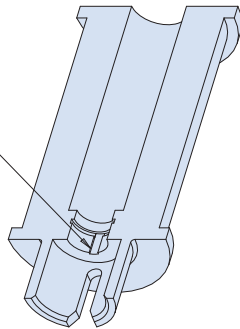
### El Ochito Jumper Mating Adapters

Connector Series	Pin Tool	Socket Tool
SuperNine (Series 23), HiPer-D (Series 28)	600-263	600-264
Series 806, 816, 792	600-267	600-264
ARINC 600, EPXB, EN3545	600-265	600-266

### El Ochito Socket Adapter



ALIGN MAIN KEY OF EL OCHITO WITH KEYWAY OF 600-XXX-1



600-XXX-3

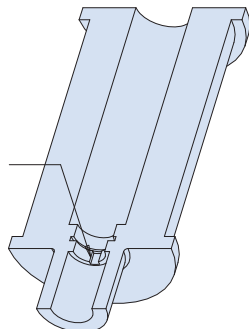
600-XXX-1

600-XXX-2

### El Ochito Pin Adapter



ALIGN MAIN KEY OF EL OCHITO WITH KEYWAY OF 600-XXX-1



600-XXX-3

600-XXX-1

600-XXX-2