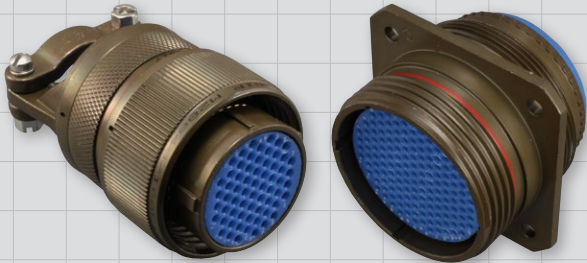


QUALIFIED

# MIL-DTL-28840 Connectors and Accessories



MIL-DTL-28840 qualified connectors in-stock and ready for immediate, same-day shipment

- High Density, Scoop Proof Contact Arrangements
- Flange Mount, Box Mount, Jam-Nut and In-Line Receptacles
- Straight, 45° and 90° Strain Reliefs and Backshell Assemblies
- Sav-Con® Connector Savers
- MIL-DTL-28840 Qualified
- Additional Glenair Commercial Part Numbers with Features Not Available in the Mil-Spec

Qualified military standard electrical connectors and accessories for shipboard—and all rugged environmental applications



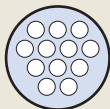
Performance Specifications	
Current Rating (Maximum)	Size #20 Contact; 20AWG 7.5A, 22AWG 5.0A, 28AWG 1.5A, 30AWG 1.0A
Test Voltage (DWV)	1000 VAC RMS at sea level. Test per EIA-364-20
Insulation Resistance	5000 megohms minimum (at ambient temperature) per EIA-364-21
Contact Resistance	Per SAE-AS39029
Operating Temperature	-55° C. to +200° C.
Immersion	per test method EIA-364-09
Shock	in accordance with MIL-S-901 grade A
Vibration	per EIA-364-28 test procedure
Magnetic Permeability	2.0 μ (Aluminum), 5.0 μ (Stainless Steel) maximum; ASTM-A342/A342M



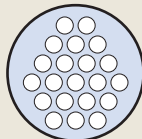
Splined MIL-DTL-28840 connector-to-backshell interface is ideally suited for heavy backshells and cables



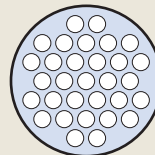
Shell Size 11  
7 Contacts



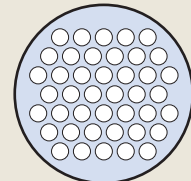
Shell Size 13  
12 Contacts



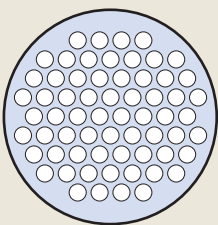
Shell Size 15  
21 Contacts



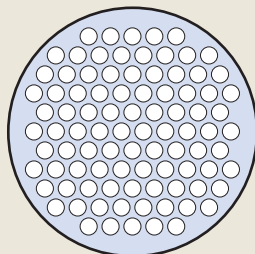
Shell Size 17  
31 Contacts



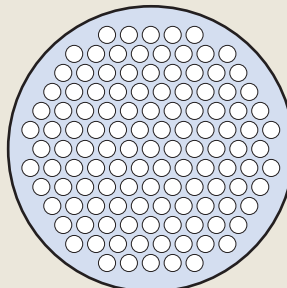
Shell Size 19  
42 Contacts



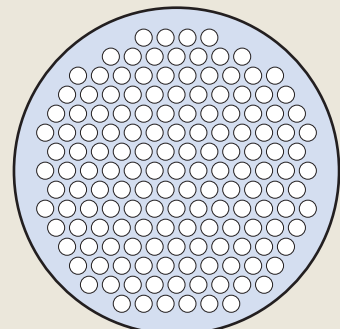
Shell Size 23  
64 Contacts



Shell Size 25  
92 Contacts



Shell Size 29  
121 Contacts

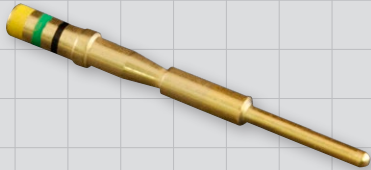


Shell Size 33  
155 Contacts

# QUALIFIED MIL-DTL-28840 Connectors and Accessories



## STANDARD PIN CRIMP CONTACT FOR MIL-DTL-28840 CONNECTORS



Mating End Size	Wire Accomodation	Military Part Number	Glenair Part Number
20	28-32 AWG	M39029/83-451	<a href="#">850-004-20-451</a>
20	22-26 AWG	M39029/83-450	<a href="#">850-004-20-450</a>
20	20-24 AWG	M39029/83-508	<a href="#">850-004-20-508</a>

## STANDARD SOCKET CRIMP CONTACT FOR MIL-DTL-28840 CONNECTORS



Mating End Size	Wire Accomodation	Military Part Number	Glenair Part Number
20	28-32 AWG	M39029/84-453	<a href="#">850-005-20-453</a>
20	22-26 AWG	M39029/84-452	<a href="#">850-005-20-452</a>
20	20-24 AWG	M39029/84-509	<a href="#">850-005-20-509</a>

<p><b>Crimping Tools</b></p> <p>M22520/34-01 Basic Crimp Tool M22520/34-02 Positioner M22520/35 Gage</p>		<p><b>Insertion &amp; Removal Tools</b></p> <p>M81969/33-01 Straight Insertion Tool M81969/33-02 Offset Insertion Tool M81969/34-01 Removal Tool</p>		<p><b>Pin Contact</b></p> <p>M39029/83 Standard Duty Electrical Pin Contact</p>		<p><b>Socket Contact</b></p> <p>M39029/84 Standard Duty Electrical Socket Contact</p>					
<p><b>Environmental Backshells</b></p> <p>M28840/6 B Straight M28840/9 B 45° M28840/8 B 90°</p>		<p><b>EMI/RFI Environmental Backshells</b></p> <p>M28840/6 A Straight M28840/8 A 90° M28840/9 A 45°</p>		<p><b>Connector Sockets</b></p> <p>600G005</p>		<p><b>"E" Nuts</b></p> <p>Non-Self-Locking</p> <p>M28840/23</p>		<p><b>Strain Reliefs</b></p> <p>Non-Self-Locking</p> <p>M28840/1 Straight M28840/3 45° M28840/2 90°</p>			
<p><b>Dummy Stowage Receptacles</b></p> <p>M28840/7</p>		<p><b>Protective Plug Covers</b></p> <p>M28840/15</p>		<p><b>Protective Receptacle Covers</b></p> <p>M28840/13</p>		<p><b>Jam Nuts</b></p> <p>MS3186</p>		<p><b>Mounting Flanges and Gaskets</b></p> <p>M28840/24 Gasket</p>		<p><b>MIL-PRF-24758A Conduit Fittings</b></p> <p>M24758-14 Straight (M24758/14 Straight.) M28840/5 Straight • M28840/25 90° • M28840/27 45° • M28840/30 Coupling</p>	