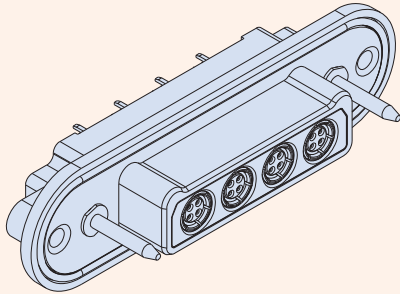


### 792-020S Quadrax PCB Plug Connectors, Panel Mount Epoxy-Sealed Straight PC Tail Quadrax Contacts, O-ring Flange



#### Technical Data

##### Specifications

- Operating temperature: -65 to +175 °C
- Current rating, size 23 contact: 5A
- Current rating, Quadrax contacts: 1.5A
- Voltage rating (DWV): 750 Vac
- Shock: EIA-364-27 condition D
- Vibration: EIA-364-28 condition V, letter E
- Insulation Resistance: 5000 MΩ min.
- Shell-to-shell resistance with EMI spring: 2.5 mΩ max.
- Altitude immersion: 75,000 feet

##### Construction

- Shell: aluminum alloy
- Metal insert: aluminum, nickel plated
- Insulators: high-grade rigid dielectric
- Size 23 contacts: copper alloy, 50 microinches gold over nickel plating
- Quadrax contacts: Copper alloy, 50 microinches gold over nickel plating. Insulators: high-grade rigid thermoplastic
- Hardware: 300 series SST, passivated
- Potting compound: epoxy

**PCB Quadrax contacts.** Series 792 PCB mount Quadrax connectors are intended for 100BASE-T and ARINC 664 protocols. 792-020S connectors feature quadrax contacts with straight printed circuit board tails, machined aluminum shells and environmental protection. Fluorosilicone O-ring provides water-tight panel seal. Scoop-proof interface for problem-free service. Military-grade performance and construction. Contacts are sealed with epoxy and are non-removeable.

#### How To Order

	Sample P/N → <b>792-020S</b>	<b>C-3P3</b>	<b>M</b>	<b>G</b>	<b>F</b>
<b>Product</b>	<b>792-020S</b> = Panel Plug, PC Tail Quadrax Socket Contacts				
<b>Insert Arrangement</b>	See Table 2				
<b>Shell Finish</b>	<b>M</b> = Electroless Nickel <b>MT</b> = Nickel-PTFE <b>ZR</b> = Black Zinc-Nickel				
<b>Mating Hardware (Table 1)</b>	<b>N</b> = No hardware <b>P</b> = Jackpost <b>G</b> = Male guide pin				
<b>O-ring Option</b>	<b>N</b> = No O-ring <b>F</b> = Fluorosilicone O-ring (non-conductive) <b>C</b> = Conductive fluorosilicone O-ring <b>S</b> = Metal EMI panel spring (non-environmental)				

#### Table 1 Mating Hardware

 <b>N</b> <b>No Hardware</b> Blind tapped holes	 <b>P</b> <b>Jackposts</b> Non-removable 8-32 UNC-2B thread	 <b>G</b> <b>Guide Pins</b> Non-removable
--	---	--

#### Table 2 Insert Arrangements

Cavity identification numbers shown are for mating face of plug connectors with socket contacts.

\* Insert arrangements with "G" designator are grounded type with metal insert. Insert arrangements with "P" designator have thermoplastic dielectric.

 1 Quadrax <b>A-1P1</b> <b>A-1G1*</b>	 1 Quadrax, 2 #23 <b>A-3P1</b>	 2 Quadrax <b>B-2P2</b> <b>B-2G2*</b>	 2 Quadrax, 4 #23 <b>B-6P2</b>	 3 Quadrax <b>C-3P3</b> <b>C-3G3*</b>	 3 Quadrax, 6 #23 <b>C-9P3</b>
 4 Quadrax <b>D-4P4</b> <b>D-4G4*</b>	 4 Quadrax, 8 #23 <b>D-12P4</b>	 5 Quadrax <b>E-5P5</b> <b>E-5G5*</b>	 5 Quadrax, 10 #23 <b>E-15P5</b>	 9 Quadrax <b>F-9P9</b> <b>F-9G9*</b>	 9 Quadrax, 22 #23, <b>F-31P9</b>

# SERIES 792

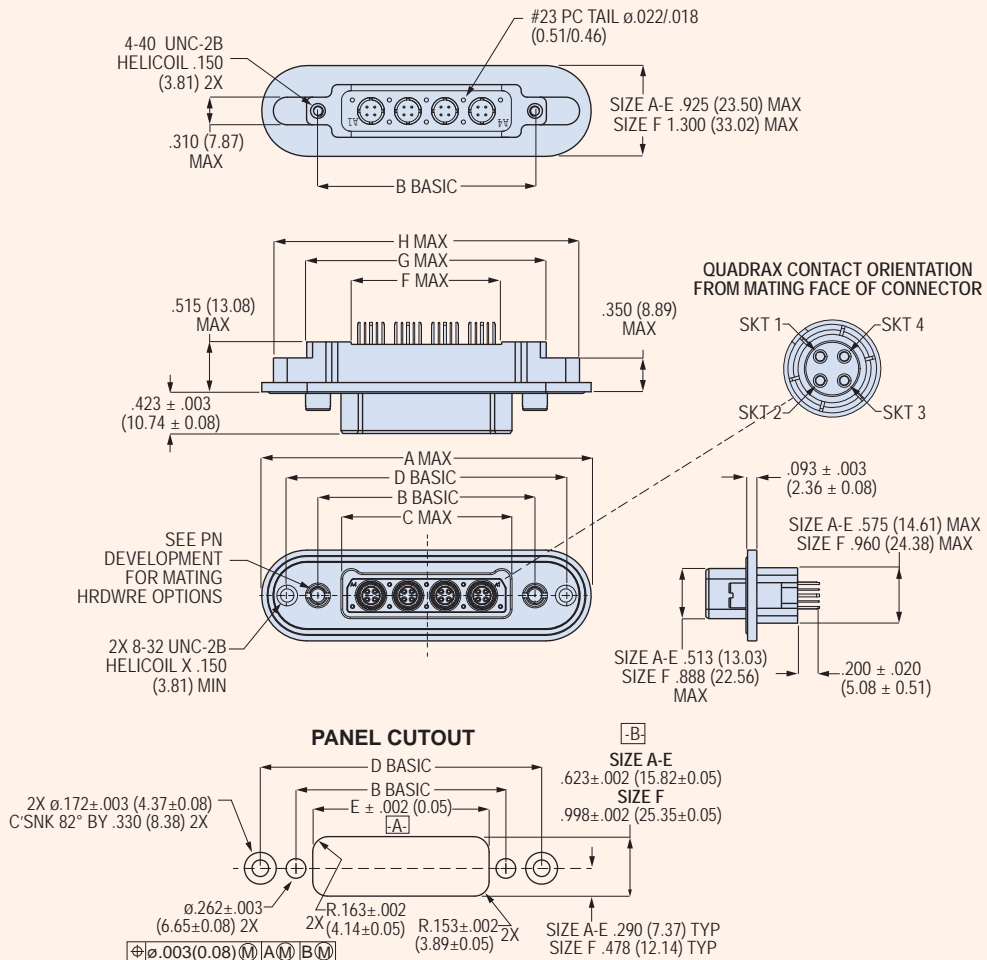
## High-Speed Ultraminiature Rectangular Connectors



### 792-020S Quadrax PCB Plug Connectors, Panel Mount Epoxy-Sealed Straight PC Tail Quadrax Contacts, O-ring Flange

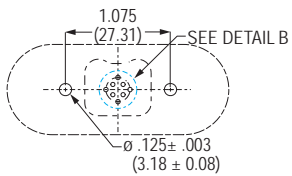
#### 792-020S Dimensions

Shell Size	A Max		B Basic		C Max		D Basic		E ±.002 (0.05)		F Max		G Max		H Max	
	In.	mm.	In.	mm.	In.	mm.	In.	mm.	In.	mm.	In.	mm.	In.	mm.	In.	mm.
<b>A</b>	2.220	56.39	1.075	27.31	.615	15.62	1.699	43.15	.725	18.42	.460	11.68	1.310	33.27	1.984	50.39
<b>B</b>	2.595	65.91	1.450	36.83	.990	25.15	2.074	52.68	1.100	27.94	.835	21.21	1.685	42.80	2.359	59.92
<b>C</b>	2.970	75.44	1.825	46.36	1.365	34.67	2.449	62.20	1.475	37.47	1.210	30.73	2.060	52.32	2.734	69.44
<b>D</b>	3.345	84.96	2.200	55.88	1.740	44.20	2.824	71.73	1.850	46.99	1.585	40.26	2.435	61.85	3.109	78.97
<b>E</b>	3.720	94.49	2.575	65.41	2.115	53.72	3.199	81.25	2.225	56.52	1.960	49.78	2.810	71.37	3.484	88.49
<b>F</b>	3.720	94.49	2.575	65.41	2.115	53.72	3.199	81.25	2.225	56.52	1.960	49.78	2.810	71.37	3.484	88.49

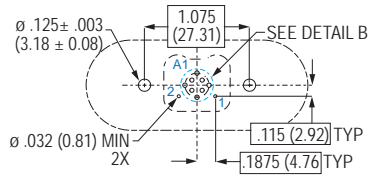


### 792-020S Quadrax PCB Plug Connectors, Panel Mount Epoxy-Sealed Straight PC Tail Quadrax Contacts, O-ring Flange

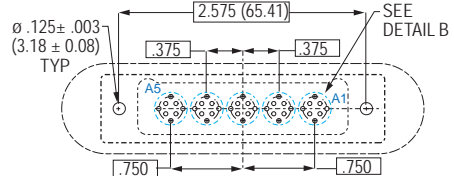
#### 792-020S Printed Circuit Board Layouts



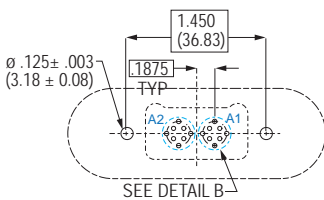
**A-1P1, A-1G1**



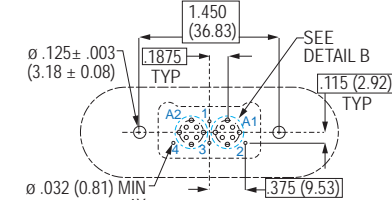
**A-3P1**



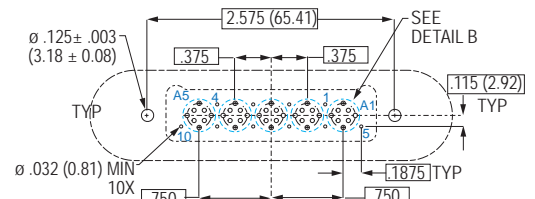
**E-5P5, E-5G5**



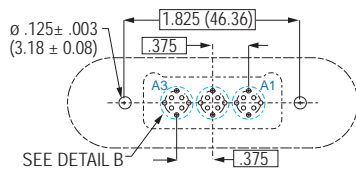
**B-2P2, B-2G2**



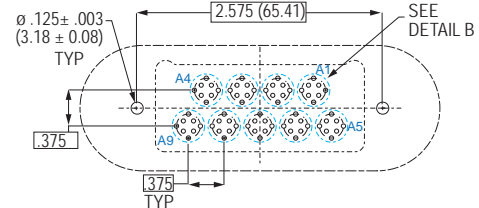
**B-6P2**



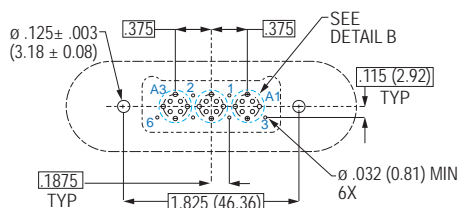
**E-15P5**



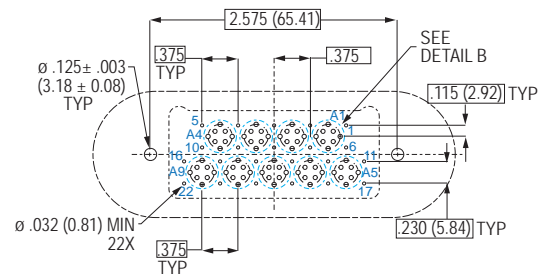
**C-3P3, C-3G3**



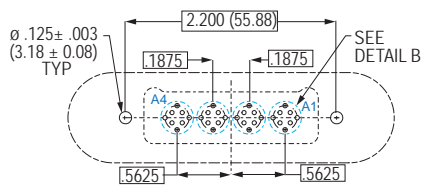
**F-9P9, F-9G9**



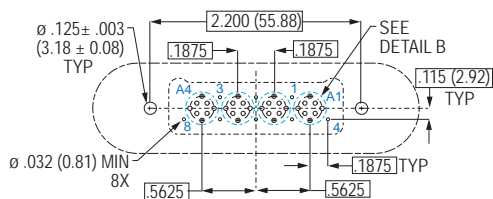
**C-9P3**



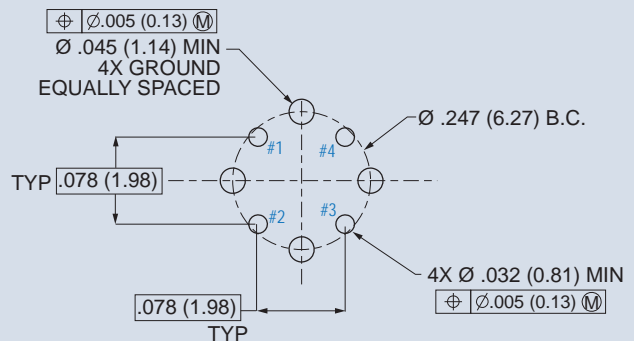
**F-31P9**



**D-4P4, D-4G4**



**D-12P4**



**DETAIL B**  
QUADRAX SOCKET CONTACT  
COMPONENT SIDE OF BOARD