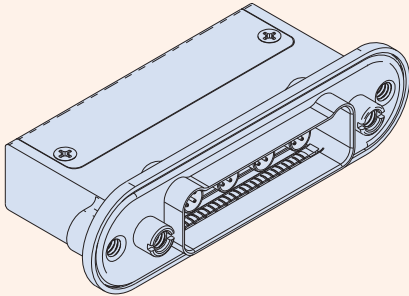


# SERIES 792

## High-Speed Ultraminiature Rectangular Connectors



### 792-025P Quadrax Right Angle PCB Receptacles, Panel Mount Epoxy-Sealed 90° PC Tail Quadrax Contacts



**Right Angle PCB Quadrax. Ultraminiature. EMI protection.** Series 792 Quadrax connectors are intended for 100BASE-T and ARINC 664 protocols. 792-025P quadrax connectors feature 90° PCB tails, machined aluminum shells and environmental protection. Scoop-proof interface for problem-free service. Military-grade performance and construction.

Technical Data	
<b>Specifications</b>	
■	Operating temperature: -65 to +175 °C
■	Current rating, size 23 contact: 5A
■	Current rating, Quadrax contacts: 1.5A
■	Voltage rating (DWV): 750 Vac
■	Shock: EIA-364-27 condition D
■	Vibration: EIA-364-28 condition V, letter E
■	Insulation Resistance: 5000 MΩ min.
■	Shell-to-shell resistance with EMI spring: 2.5 mΩ max.
■	Altitude immersion: 75,000 feet
<b>Construction</b>	
■	Shell: aluminum alloy
■	Metal insert: aluminum, nickel plated
■	Insulators: high-grade rigid dielectric
■	Contacts: copper alloy, 50 microinches gold over nickel plating
■	Interfacial seal: fluorosilicone blend
■	Potting compound: epoxy
■	EMI spring: copper alloy, nickel plated
■	O-ring: code F fluorosilicone, code C silver plated aluminum-filled fluorosilicone, code S gold plated copper alloy
■	Hardware: 300 series SST, passivated

How To Order						
	Sample P/N → 792-025P	B-6P2	M	E	B	F
<b>Product</b>	792-025P = Right Angle PCB Receptacle, Quadrax Pin Contacts, Panel Mount					
<b>Insert Arrangement</b>	See Table 2					
<b>Shell Finish</b>	M = Electroless Nickel MT = Nickel-PTFE ZR = Black Zinc-Nickel					
<b>EMI Spring</b>	E = EMI Spring N = No EMI Spring					
<b>Hardware Option (Table 1)</b>	N = No Hardware P = Jackposts B = Guide Bushings					
<b>O-Ring Option</b>	N = No O-Ring F = Fluorosilicone O-Ring C = Conductive Fluorosilicone O-Ring S = Metal EMI Spring (gold plated BeCu, non-environmental)					

Table 1 Mating Hardware		
 <b>N</b> <b>No Hardware</b> Blind tapped holes 8-32 UNC-2B .150 (3.81) Min.	 <b>P</b> <b>Jackposts</b> Non-removable 8-32 UNC-2B thread	 <b>B</b> <b>Guide Bushings</b> Non-removable

Table 2 Insert Arrangements						
Cavity identification numbers shown are for mating face of receptacle connectors with pin contacts. * Insert arrangements with "G" designator are grounded type with metal insert. Insert arrangements with "P" designator have thermoplastic dielectric.						
 1 Quadrax <b>A-1P1</b> <b>A-1G1*</b>	 1 Quadrax, 2 #23 <b>A-3P1</b>	 2 Quadrax <b>B-2P2</b> <b>B-2G2*</b>	 2 Quadrax, 4 #23 <b>B-6P2</b>	 3 Quadrax <b>C-3P3</b> <b>C-3G3*</b>	 3 Quadrax, 6 #23 <b>C-9P3</b>	
 4 Quadrax <b>D-4P4</b> <b>D-4G4*</b>	 4 Quadrax, 8 #23 <b>D-12P4</b>	 5 Quadrax <b>E-5P5</b> <b>E-5G5*</b>	 5 Quadrax, 10 #23 <b>E-15P5</b>			

# SERIES 792

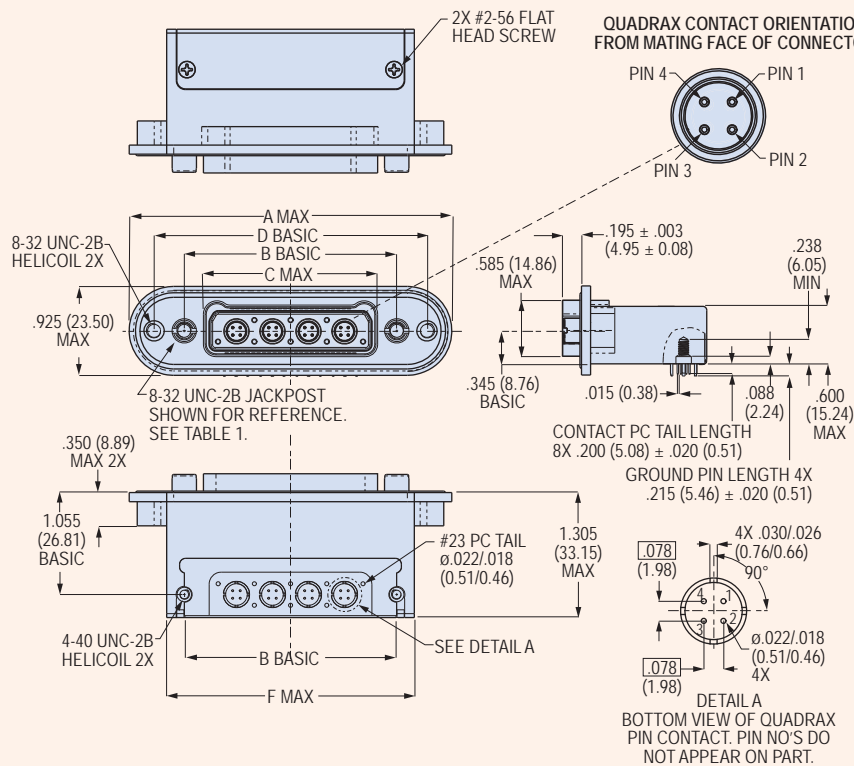
High-Speed Ultraminiature Rectangular Connectors



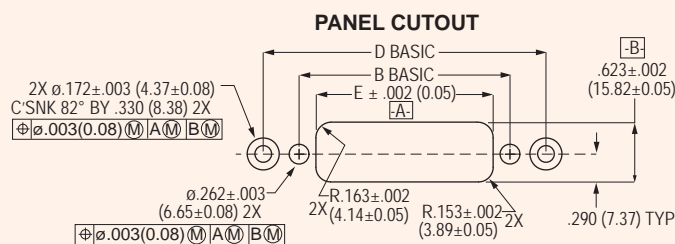
## 792-025P Quadrax Right Angle PCB Receptacles, Panel Mount Epoxy-Sealed 90° PC Tail Quadrax Contacts

### 792-025P Dimensions

Shell Size	A Max		B Basic		C Max		D Basic		E ±.002 (0.05)		F Max	
	In.	mm.	In.	mm.	In.	mm.	In.	mm.	In.	mm.	In.	mm.
<b>A</b>	2.220	56.39	1.075	27.31	.690	17.53	1.699	43.15	.725	18.42	1.455	36.96
<b>B</b>	2.595	65.91	1.450	36.83	1.065	27.05	2.074	52.68	1.100	27.94	1.830	46.82
<b>C</b>	2.970	75.44	1.825	46.36	1.440	36.58	2.449	62.20	1.475	37.47	2.205	56.01
<b>D</b>	3.345	84.96	2.200	55.88	1.815	46.10	2.824	71.73	1.850	46.99	2.580	65.53
<b>E</b>	3.720	94.49	2.575	65.41	2.190	55.63	3.199	81.25	2.225	56.52	2.955	75.06



### 792-025P Panel Cutout



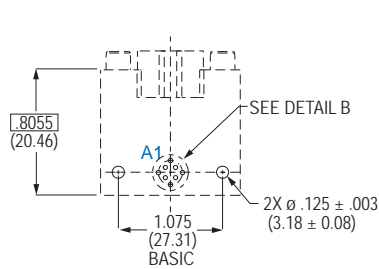
# SERIES 792

## High-Speed Ultraminiature Rectangular Connectors

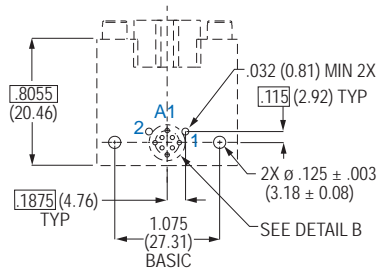


### 792-025P Quadrax Right Angle PCB Receptacles, Panel Mount Epoxy-Sealed 90° PC Tail Quadrax Contacts

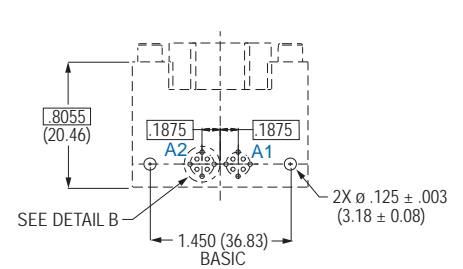
#### 792-025P Printed Circuit Board Layouts



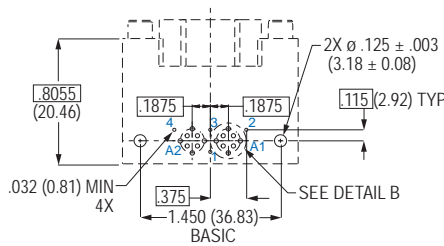
**A-1P1, A-1G1**



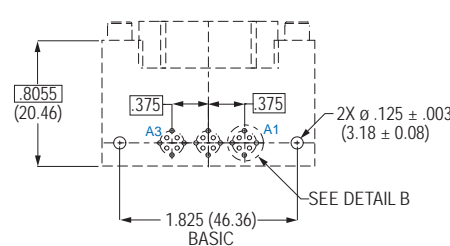
**A-3P1**



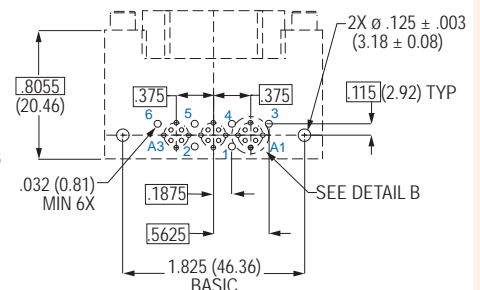
**B-2P2, B-2G2**



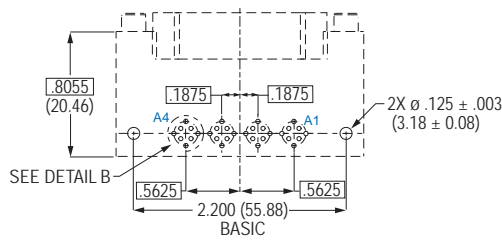
**B-6P2**



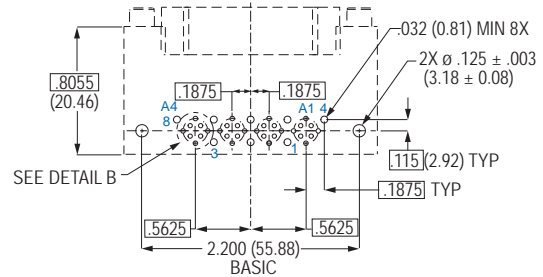
**C-3P3, C-3G3**



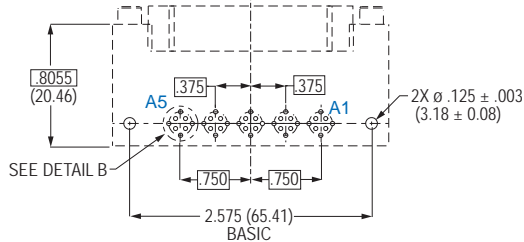
**C-9P3**



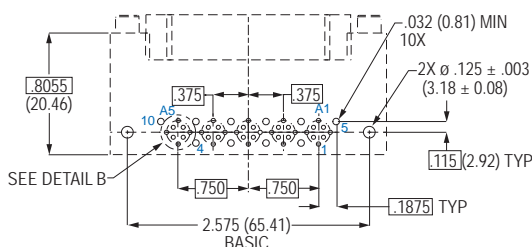
**D-4P4, D-4G4**



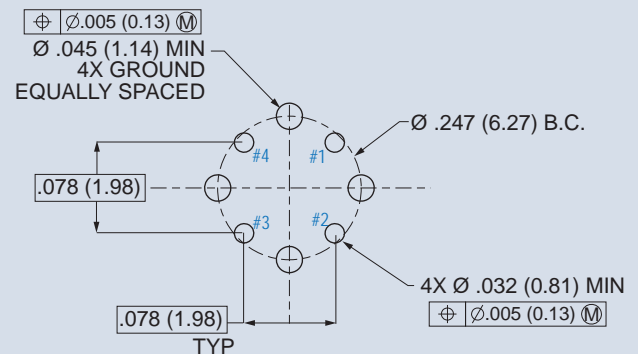
**D-12P4**



**E-5P5, E-5G5**



**E-15P5**



**DETAIL B**  
QUADRAX PIN CONTACT  
COMPONENT SIDE OF BOARD