



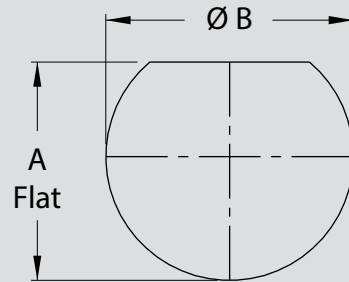
SERIES 80

Mighty Mouse Connectors and Cables



Jam-Nut, Rear Panel Mount, Cutout Dimensions Series 800, 801, and 802

SERIES 800, 801, 802 REAR PANEL MOUNT, JAM-NUT PANEL CUTOUT DIMENSIONS



Rear Panel Mount Connectors

800 Series			801 Series			802 Series		
ShellSize	A Flat	ØB	ShellSize	AFlat	ØB	ShellSize	AFlat	ØB
5	.295 (7.49)	.322 (8.18)	5	.358 (9.09)	.385 (9.78)	5	.475 (12.07)	.510 (12.95)
	.291 (7.39)	.317 (8.05)		.354 (8.99)	.380 (9.65)		.471 (11.96)	.505 (12.83)
6	.362 (9.19)	.385 (9.78)	6	.418 (10.62)	.448 (11.38)	6	.605 (15.37)	.635 (16.13)
	.358 (9.09)	.380 (9.65)		.414 (10.52)	.443 (11.25)		.601 (15.27)	.630 (16.00)
7	.428 (10.87)	.448 (11.38)	7	.544 (13.82)	.572 (14.53)	7	.664 (16.87)	.698 (17.73)
	.424 (10.77)	.443 (11.25)		.540 (13.72)	.567 (14.40)		.660 (16.76)	.693 (17.60)
8	.483 (12.27)	.510 (12.95)	8	.544 (13.82)	.572 (14.53)	8	.737 (18.72)	.760 (19.30)
	.479 (12.17)	.505 (12.83)		.540 (13.72)	.567 (14.40)		.733 (18.62)	.755 (19.18)
9	.540 (13.72)	.572 (14.53)	9	.604 (15.34)	.635 (16.13)	9	.786 (19.96)	.822 (20.88)
	.536 (13.61)	.567 (14.40)		.600 (15.24)	.630 (16.00)		.782 (19.86)	.817 (20.75)
10	.614 (15.60)	.635 (16.13)	10	.668 (16.97)	.698 (17.73)	10	.837 (21.26)	.885 (22.48)
	.610 (15.49)	.630 (16.00)		.664 (16.87)	.693 (17.60)		.833 (21.16)	.880 (22.35)
12	.722 (18.34)	.760 (19.30)	11	.726 (18.44)	.760 (19.30)	12	.901 (22.89)	.948 (24.08)
	.718 (18.24)	.755 (19.18)		.722 (18.34)	.755 (19.18)		.897 (22.78)	.943 (23.95)
14	.856 (21.74)	.885 (22.48)	13	.853 (21.67)	.885 (22.48)	14	1.087 (27.61)	1.135 (28.83)
	.852 (21.64)	.880 (22.35)		.849 (21.56)	.880 (22.35)		1.083 (27.51)	1.130 (28.70)
15	.918 (23.32)	.947 (24.05)	16	1.030 (26.16)	1.072 (27.23)	15	1.157 (29.39)	1.198 (30.43)
	.914 (23.22)	.942 (23.93)		1.026 (26.06)	1.067 (27.10)		1.153 (29.29)	1.193 (30.30)
			17	1.104 (28.04)	1.135 (28.83)			
				1.100 (27.94)	1.130 (28.70)			
			19	1.235 (31.37)	1.260 (32.00)			
				1.231 (31.27)	1.255 (31.88)			
			21	1.355 (34.42)	1.385 (35.18)			
				1.351 (34.32)	1.380 (35.05)			

General Information and Reference