

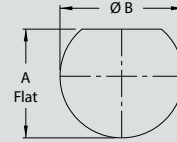
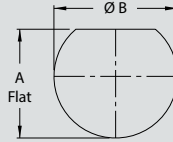
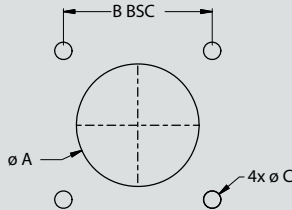


SERIES 802, 3500 PSI SUBMERSIBLE AquaMouse Connectors and Cables



Panel Mount Dimensions

PANEL CUT-OUT DIMENSIONS



Flange Mount Connectors			
Shell Size	ø A	B BSC	ø C
5	.332 (8.43)	.500 (12.70)	.125 (3.18)
6	.389 (9.88)	.625 (15.88)	.125 (3.18)
7	.515 (13.08)	.688 (17.48)	.125 (3.18)
8	.567 (14.40)	.7450 (18.92)	.125 (3.18)
9	.639 (16.23)	.812 (20.62)	.125 (3.18)
10	.694 (17.63)	.875 (22.23)	.125 (3.18)
12	.770 (19.56)	.938 (23.83)	.125 (3.18)
14	.9415 (23.91)	1.125 (28.58)	.125 (3.18)
15	1.020 (25.91)	1.188 (30.18)	.125 (3.18)

Rear Panel Mount Connectors		
Shell Size	A Flat	ø B
5	.475 (12.07)	.510 (12.95)
	.471 (11.96)	.505 (12.83)
6	.605 (15.37)	.635 (16.13)
	.601 (15.27)	.630 (16.00)
7	.664 (16.87)	.698 (17.73)
	.660 (16.76)	.693 (17.60)
8	.737 (18.72)	.760 (19.30)
	.733 (18.62)	.755 (19.18)
9	.786 (19.96)	.822 (20.88)
	.782 (19.86)	.817 (20.75)
10	.837 (21.26)	.885 (22.48)
	.833 (21.16)	.880 (22.35)
12	.901 (22.89)	.948 (24.08)
	.897 (22.78)	.943 (23.95)
14	1.087 (27.61)	1.135 (28.83)
	1.083 (27.51)	1.130 (28.70)
15	1.157 (29.39)	1.198 (30.43)
	1.153 (29.29)	1.193 (30.30)

Front Panel Mount Connectors		
Shell Size	A Flat	ø B
5	.299 (7.59)	.322 (8.18)
	.295 (7.49)	.317 (8.05)
6	.416 (10.57)	.448 (11.38)
	.412 (10.46)	.443 (11.25)
7	.479 (12.17)	.510 (12.95)
	.475 (12.07)	.505 (12.83)
8	.541 (13.74)	.572 (14.53)
	.537 (13.64)	.567 (14.40)
9	.604 (15.34)	.635 (16.13)
	.600 (15.24)	.630 (16.00)
10	.660 (16.76)	.698 (17.73)
	.656 (16.66)	.693 (17.60)
12	.728 (18.49)	.760 (19.30)
	.724 (18.39)	.755 (19.18)
14	.903 (22.94)	.948 (24.08)
	.899 (22.83)	.943 (23.95)
15	.965 (24.51)	1.010 (25.65)
	.961 (24.41)	1.005 (25.53)