



# Series 804 Push-Pull Mighty Mouse Crimp Contact, Panel Mount Plug 804-116 Ordering Information

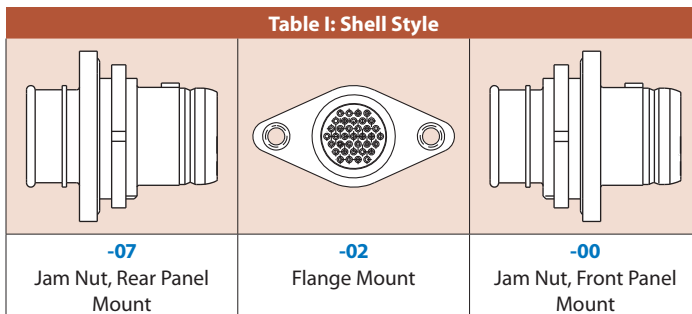


**Panel Mount Plugs** with push/pull action for quick mating and demating of connectors used for interfacing with peripheral equipment, such as laptops or GPS systems. These small form factor connectors save panel space and come with removable, rear release crimp contacts. Each contact is securely held in place by metal clips locking the contact in place. Crimp contacts can be replaced and serviced. Integral banding porch allows for termination of shielding braid material using Band-Master® ATS bands. Mastes with all push/pull high density receptacle connectors with same polarization and opposite contact gender (804-003, 804-004, 804-005 and 804-006). Red stripe indicator aides in alignment during mating.

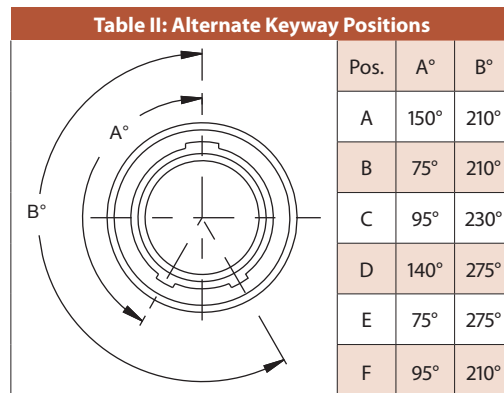
## How To Order

Sample Part Number	804-116	-07	NF	10-26	E	A
<b>Series</b>	804-116 = Panel Mount Plug, Crimp Contacts and Banding Porch					
<b>Shell Style (See Table I)</b>	00 = Front Panel Mount, Jam Nut 02 = Flange Mount 07 = Rear Panel Mount, Jam Nut					
<b>Shell Material and Finish</b>	C = Aluminum / Black Anodize (Non-Conductive); RoHS Compliant M = Aluminum / Electroless Nickel; RoHS Compliant MT = Aluminum / Nickel-PTFE RoHS Compliant NF = Aluminum / Cadmium with Olive Drab Chromate ZNU = Aluminum / Zinc-Nickel with Black Chromate Z1 = Stainless Steel / Passivated; RoHS Compliant					
<b>Shell Size - Insert Arrangement</b>	See Contact Arrangements Page G-2					
<b>Contact Type</b>	A = Pin Connector, Less Contacts B = Socket Connectors, Less Contacts		P = Pin S = Socket		G = #23 Pin with 30 AWG Crimp Barrel H = #23 Socket with 30 AWG Crimp Barrel	
<b>Shell Key Positions (See Table II)</b>	Omit Character = Single Key (non polarized) A = Normal B = Pos. B C = Pos. C D = Pos. D E = Pos. E F = Pos. F					

### Table I: Shell Style



### Table II: Alternate Keyway Positions



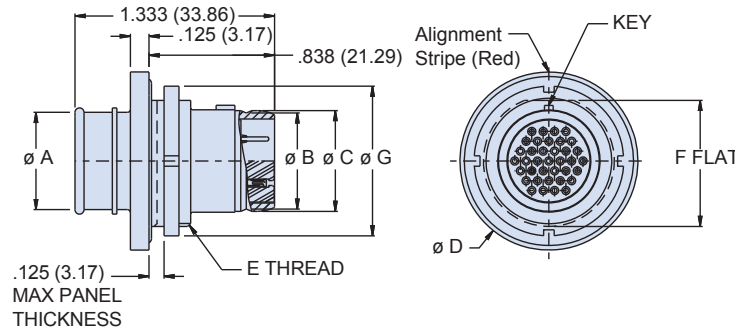
Dimensions in Inches (millimeters) are subject to change without notice.

# Series 804 Push-Pull Mighty Mouse Crimp Contact, Panel Mount Plug 804-116-07 Dimensions



Series 804

## Rear panel mount plug - style 07



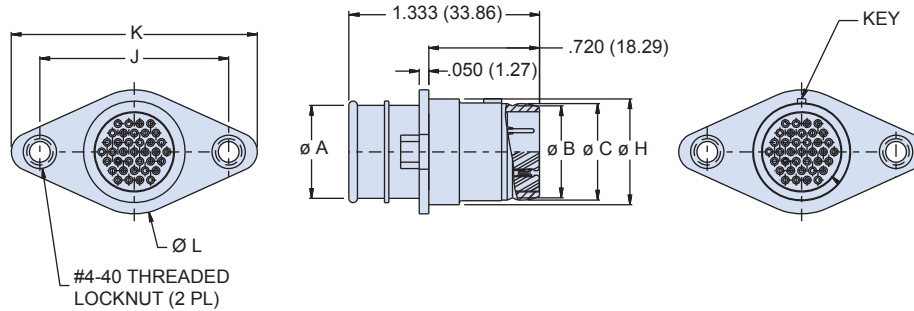
Dimensions							
Shell Size	$\varnothing A$	$\varnothing B$	$\varnothing C$	$\varnothing D$	E Thread	F Flat	$\varnothing G$
5	0.245 (6.22)	0.219 (5.56)	0.250 (6.35)	0.730 (18.54)	.4375-32 UN-2A	0.415 [0.02]	0.562 [0.02]
6	0.290 (7.37)	0.282 (7.16)	0.313 (7.95)	0.730 (18.54)	.5000-32 UN-2A	0.467 [0.02]	0.625 [0.02]
7	0.390 (9.91)	0.351 (8.92)	0.382 (9.70)	0.910 (23.11)	.6250-28 UN-2A	0.594 [0.02]	0.750 [0.03]
8	0.445 (11.30)	0.398 (10.11)	0.429 (10.90)	0.955 (24.26)	.6250-28 UN-2A	0.594 [0.02]	0.750 [0.03]
9	0.500 (12.70)	0.454 (11.53)	0.486 (12.34)	1.000 (25.40)	.6875-28 UN-2A	0.655 [0.03]	0.812 [0.03]
10	0.560 (14.22)	0.529 (13.44)	0.562 (14.27)	1.085 [0.04]	.7500-28 UN-2A	0.721 [0.03]	0.875 [0.03]
12	0.650 (16.51)	0.646 (16.41)	0.677 (17.20)	1.180 [0.05]	.8750-28 UN-2A	0.843 [0.03]	1.000 [0.04]
14	0.805 (20.45)	0.768 (19.51)	0.800 (20.32)	1.325 [0.05]	1.0000-28 UN-2A	0.968 [0.04]	1.125 [0.04]

Recommended Panel Cutout				
Shell Size	A Flat		$\varnothing B$	
	In. $\pm .002$	mm. $\pm 0.05$	In. $\pm .005$	mm. $\pm 0.13$
5	.423	10.74	.448	11.38
6	.475	12.07	.510	12.95
7	.588	14.94	.635	16.13
8	.602	15.29	.635	16.13
9	.663	16.84	.698	17.73
10	.729	18.82	.760	19.30
12	.851	21.62	.885	22.48
14	.976	24.79	1.010	25.65

Diagram showing the recommended panel cutout with dimensions A FLAT and  $\varnothing B$ .

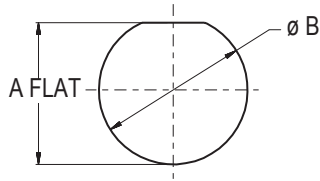
Dimensions in Inches (millimeters) are subject to change without notice.

## Flange mount plug - style 02



Dimensions							
Shell Size	Ø A	Ø B	Ø C	H	J	K	Ø L
5	0.245 (6.22)	0.219 (5.56)	0.250 (6.35)	0.320 [0.01]	0.755 [0.03]	1.055 [0.04]	0.420 [0.02]
6	0.290 (7.37)	0.282 (7.16)	0.313 (7.95)	0.385 [0.02]	0.820 [0.03]	1.120 [0.04]	0.445 [0.02]
7	0.390 (9.91)	0.351 (8.92)	0.382 (9.70)	0.450 [0.02]	0.885 [0.03]	1.185 [0.05]	0.550 [0.02]
8	0.445 (11.30)	0.398 (10.11)	0.429 (10.90)	0.495 [0.02]	0.930 [0.04]	1.230 [0.05]	0.593 [0.02]
9	0.500 (12.70)	0.454 (11.53)	0.486 (12.34)	0.555 [0.02]	0.990 [0.04]	1.290 [0.05]	0.651 [0.03]
10	0.560 (14.22)	0.529 (13.44)	0.562 (14.27)	0.625 [0.02]	1.060 [0.04]	1.360 [0.05]	0.741 [0.03]
12	0.650 (16.51)	0.646 (16.41)	0.677 (17.20)	0.750 [0.03]	1.185 [0.05]	1.485 [0.06]	0.850 [0.03]
14	0.805 (20.45)	0.768 (19.51)	0.800 (20.32)	0.865 [0.03]	1.300 [0.05]	1.600 [0.06]	0.975 [0.04]

Front Mount Jam Nut Panel Cutout				
Shell Size	A Flat		Ø B	
	In. ± .002	mm. ± 0.05	In. ± .005	mm. ± 0.13
5	.423	10.74	.448	11.38
6	.475	12.07	.510	12.95
7	.588	14.94	.635	16.13
8	.602	15.29	.635	16.13
9	.663	16.84	.698	17.73
10	.729	18.82	.760	19.30
12	.851	21.62	.885	22.48
14	.976	24.79	1.010	25.65



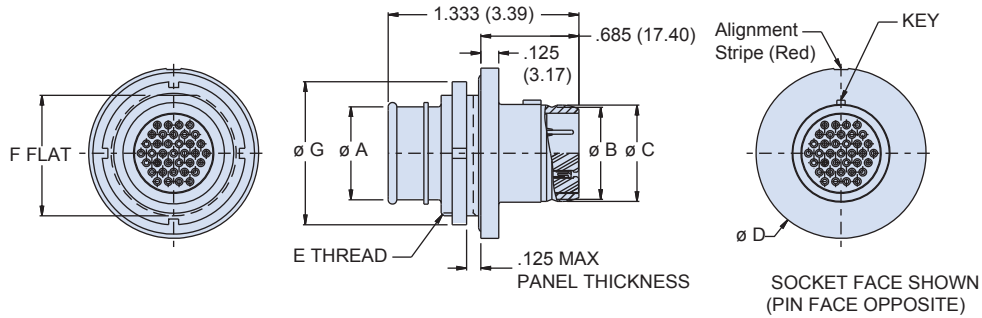
Dimensions in Inches (millimeters) are subject to change without notice.

# Series 804 Push-Pull Mighty Mouse Crimp Contact, Panel Mount Plug 804-116-00 Dimensions



Series 804

## Front panel mount, plug - style 00



Dimensions								
Shell Size	$\varnothing A$	$\varnothing B$	$\varnothing C$	$\varnothing D$	E Thread	F Flat	$\varnothing G$	H
5	0.245 (6.22)	0.219 (5.56)	0.250 (6.35)	0.730 (18.54)	.4375-32 UN-2A	0.415 [0.02]	0.562 [0.02]	0.320 [0.01]
6	0.290 (7.37)	0.282 (7.16)	0.313 (7.95)	0.730 (18.54)	.5000-32 UN-2A	0.467 [0.02]	0.625 [0.02]	0.385 [0.02]
7	0.390 (9.91)	0.351 (8.92)	0.382 (9.70)	0.910 (23.11)	.6250-28 UN-2A	0.594 [0.02]	0.750 [0.03]	0.450 [0.02]
8	0.445 (11.30)	0.398 (10.11)	0.429 (10.90)	0.955 (24.26)	.6250-28 UN-2A	0.594 [0.02]	0.750 [0.03]	0.495 [0.02]
9	0.500 (12.70)	0.454 (11.53)	0.486 (12.34)	1.000 (25.40)	.6875-28 UN-2A	0.655 [0.03]	0.812 [0.03]	0.555 [0.02]
10	0.560 (14.22)	0.529 (13.44)	0.562 (14.27)	1.085 [0.04]	.7500-28 UN-2A	0.721 [0.03]	0.875 [0.03]	0.625 [0.02]
12	0.650 (16.51)	0.646 (16.41)	0.677 (17.20)	1.180 [0.05]	.8750-28 UN-2A	0.843 [0.03]	1.000 [0.04]	0.750 [0.03]
14	0.805 (20.45)	0.768 (19.51)	0.800 (20.32)	1.325 [0.05]	1.0000-28 UN-2A	0.968 [0.04]	1.125 [0.04]	0.865 [0.03]

Front Mount Jam Nut Panel Cutout				
Shell Size	A Flat		$\varnothing B$	
	In. $\pm .002$	mm. $\pm 0.05$	In. $\pm .005$	mm. $\pm 0.13$
5	.423	10.74	.448	11.38
6	.475	12.07	.510	12.95
7	.588	14.94	.635	16.13
8	.602	15.29	.635	16.13
9	.663	16.84	.698	17.73
10	.729	18.82	.760	19.30
12	.851	21.62	.885	22.48
14	.976	24.79	1.010	25.65

Dimensions in Inches (millimeters) are subject to change without notice.