

Series 806 Mil-Aero Connectors



Series 806 Backshell, Adapter and Strain Relief Selection Guide

STRAIN RELIEF CLAMPS



620V081
Composite Strain Relief Clamp
Straight, 45° and 90°
[Page 134](#)



620V080
Strain Relief Clamp
Aluminum or SST, self-locking
[Page 147](#)



871V004
Swing-Arm Flex Clamp
EMI Banding Adapter, Composite
[Page 179](#)



871V006
Style II Composite Swing-Arm Flex Clamp,
Banding Adapter
[Page 181](#)

SWING-ARM FLEX CLAMP

EMI RFI BANDING ADAPTERS



440V191
Band/Boot Adapters
Aluminum or stainless steel
[Page 148](#)



440V202
Composite Band/Boot Adapters
These composite self-locking adapters are lightweight and corrosion resistant
[Page 136](#)



317V111
Piggyback Boot Adapter
These composite, self-locking backshells have a drop-in banding adapter and are supplied with pre-attached shrink boot
[Page 140](#)

EMI BACKSHELLS



380V143
EMI Backshell
These self-locking backshells are available in aluminum or stainless steel
[Page 141](#)



387V243
Composite EMI
Ground rings for shield termination
[Page 135](#)



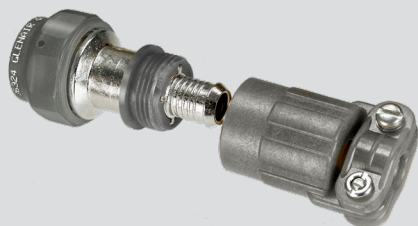
390V091
EMI Environmental
Aluminum or SST. Environmental
[Page 143](#)

Series 806 Mil-Aero Connectors



Series 806 Backshell, Adapter and Strain Relief Selection Guide

"BAND-IN-A-CAN" BANDING ADAPTERS



4470V1061

Composite Band-in-a-Can

Use with Band-Master ATS® shield termination bands. Saddle clamps provide cable strain relief. Non-environmental.

[Page 171](#)



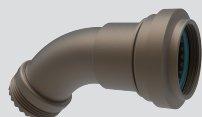
443V039

Aluminum or SST Band-in-a-Can

Use with Band-Master ATS® shield termination bands. Environmentally protected with O-rings.

[Page 178](#)

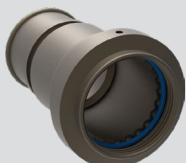
SIZE #8 CONTACT, EXTENDED LENGTH BACKSHELLS



320V030

Environmental Extended Adapter

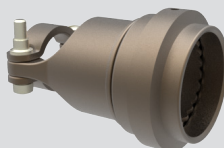
[Page 183](#)



440V233

Environmental Banding Backshell

[Page 184](#)



620VS090

Strain Relief Cable Clamp Backshell

[Page 186](#)



440VS232

EMI/RFI Cable Clamp Backshell with Banding Platform

[Page 187](#)

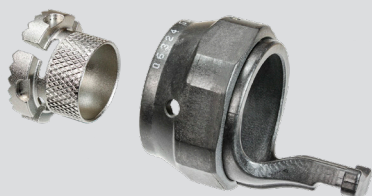


443V042

EMI/RFI Cable Clamp Backshell and Band-in-a-Can Banding Platform

[Page 188](#)

COMPOSITE QWIK-TY



457V048

Composite Qwik-Ty with Drop-In EMI Adapter

Drop-in adapter terminates to cable braid shield.

[Page 165](#)

SHORTING CAP

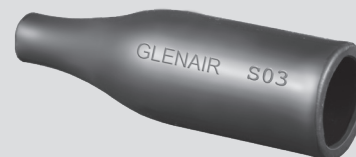


340VS035

Shorting Backshell

[Page 190](#)

SHRINK BOOTS



809-060

Thin Lip Shrink Boots

[Page 191](#)