

# QPL QUALIFIED

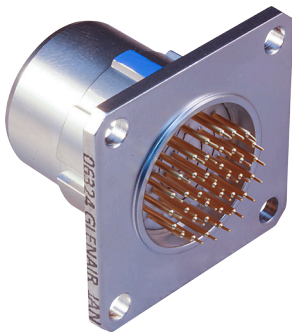
## MIL-DTL-38999 Series IV, Breech Coupling

### 38999/41 box mount receptacle



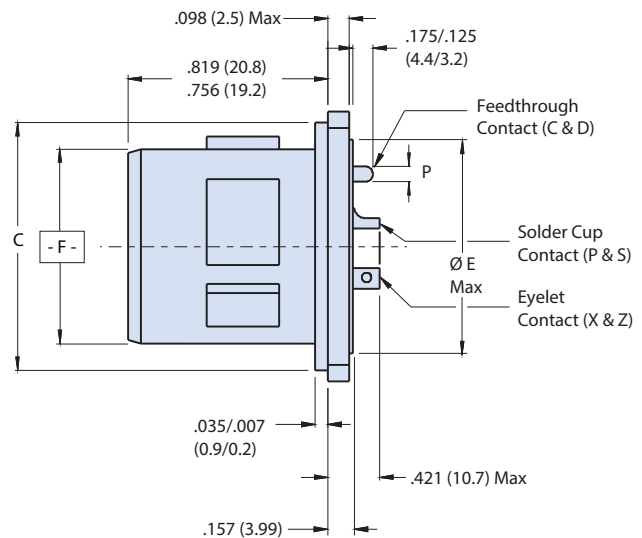
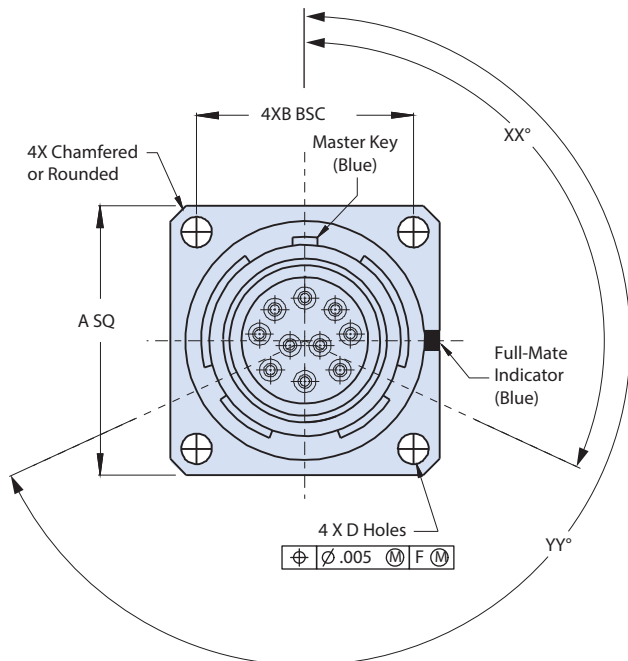
SERIES IV HERMETIC

QPL Part Number Development						
<b>Sample Part Number</b>	D38999/41		Y	B	35	P N
<b>D38999</b>	38999/41 = Box mount receptacle					
<b>Class</b>	N = Hermetic, CRES, nickel finish, conductive, -65°C to 200°C Y = Hermetic, CRES, passivate finish, conductive, -65°C to 200°C					
<b>Shell Size</b>	B, C, D, E, F, G, H, J					
<b>Insert Arrangement</b>	Per MIL-STD-1560; See reference information section for details					
<b>Contact Style</b>	P = Pin, solder cup S = Socket, solder cup		X = Pin, eyelet Z = Socket, eyelet		C = Pin, PCB flex feedthrough D = Socket, PCB flex feedthrough	
<b>Polarization</b>	N (Normal), A, B, C, D, K, L, M, R; see polarization positions table					



Polarization Position									
	N	A	B	C	D	K	L	M	R
XX	110°	100°	90°	80°	70°	120°	120°	120°	120°
YY	250°	260°	270°	280°	290°	255°	265°	275°	285°

Wire Accommodation	
Contact Size	Wire Gauge
22D	#22 - #28
20	#20 - #24
16	#16 - #20
12	#12 - #14



# COTS EQUIVALENT MIL-DTL-38999 Series IV, Breech Coupling 234-100-H2 box mount receptacle



SERIES IV HERMETIC

COTS Part Number Development						
Sample Part Number	234-100-H2	Z1	11	-35	P	N
Series / Basic Part No.	234-100-H2 = Hermetic, Box mount hermetic receptacle					
Material/Finish	ZL = CRES, nickel finish, conductive, -65°C to 200°C Z1 = CRES, passivate finish, conductive, -65°C to 200°C					
Shell Size	11, 13, 15, 17, 19, 21, 23, 25					
Insert Arrangement	Per MIL-STD-1560; See reference information section for details					
Contact Style	P = Pin, solder cup      X = Pin, eyelet      C = Pin, PCB flex feedthrough S = Socket, solder cup      Z = Socket, eyelet      D = Socket, PCB flex feedthrough					
Polarization	N (Normal), A, B, C, D, K, L, M, R; see polarization position position table					

Additional material/finish options are available, consult factory for ordering information.

Contact Size	
<p>FEEDTHROUGH CONTACT STYLE C AND D</p> <p>SIZE 12 AND SIZE 16 .050 ± .015 (1.27 ± 0.38)</p> <p>SIZE 22D AND SIZE 20</p>	
Contact Size	ø P
22D	.011 (0.28) .015 (0.38)
20	.024 (0.61) .028 (0.71)
16	.0635 (1.61) .0615 (1.56)
12	.095 (2.41) .093 (2.36)

Dimensions										
Shell Size Code	Shell Size	A Sq	B Bsc	C Dia	D Dia	Ø E Max	Ø G Holes	Ø H Min	Ø J Min	K Bsc
B	11	1.051 (26.7) 1.008 (25.6)	.812 (20.6)	.793 (20.1) .778 (19.8)	.138 (3.5) .122 (3.1)	.625 (15.88)	.133 (3.38) .123 (3.12)	.796 (20.22)	.625 (15.9)	.812 (20.6)
C	13	1.145 (29.1) 1.102 (28.0)	.906 (23.0)	.919 (23.3) .904 (23.0)	.138 (3.5) .122 (3.1)	.749 (19.02)	.133 (3.38) .123 (3.12)	.921 (23.4)	.750 (19.1)	.906 (23.0)
D	15	1.240 (31.5) 1.197 (30.4)	.969 (24.6)	1.044 (26.5) 1.029 (26.1)	.138 (3.5) .122 (3.1)	.906 (23.01)	.133 (3.38) .123 (3.12)	1.047 (26.6)	.906 (23.0)	.969 (24.61)
E	17	1.334 (33.9) 1.291 (32.8)	1.062 (27.0)	1.170 (29.7) 1.155 (29.3)	.138 (3.5) .122 (3.1)	1.016 (25.81)	.133 (3.38) .123 (3.12)	1.218 (30.9)	1.016 (25.8)	1.062 (27.0)
F	19	1.460 (37.1) 1.417 (36.0)	1.156 (29.4)	1.294 (32.9) 1.279 (32.5)	.138 (3.5) .122 (3.1)	1.141 (28.98)	.133 (3.38) .123 (3.12)	1.296 (32.9)	1.142 (29.0)	1.156 (29.4)
G	21	1.583 (40.2) 1.539 (39.1)	1.250 (31.8)	1.419 (36.0) 1.404 (35.7)	.138 (3.5) .122 (3.1)	1.266 (32.16)	.133 (3.38) .123 (3.12)	1.421 (36.1)	1.266 (32.2)	1.250 (31.8)
H	23	1.709 (43.4) 1.665 (42.3)	1.375 (34.9)	1.544 (39.2) 1.529 (38.8)	.157 (4.0) .142 (3.6)	1.375 (34.92)	.159 (4.04) .149 (3.78)	1.546 (39.3)	1.375 (34.9)	1.375 (34.9)
J	25	1.835 (46.6) 1.791 (45.5)	1.500 (38.1)	1.670 (42.4) 1.654 (42.0)	.157 (4.0) .142 (3.6)	1.484 (37.69)	.155 (3.94) .145 (3.68)	1.672 (42.5)	1.484 (37.7)	1.500 (38.1)

Additional Material/Finish Options	
Finish Code	Description
Z1S†	CRES, passivate finish, conductive, -65°C to 200°C, space-grade

† Connectors ordered with "Z1S" include outgas processing to conform to outgassing requirements of Class H.

