

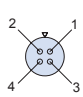
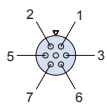
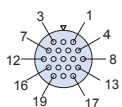
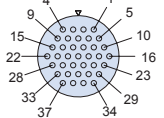
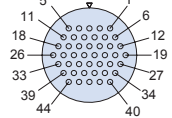
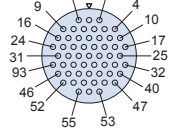
**Glenair Rear Panel Mount Threaded Coupling Receptacle Connectors** feature gold alloy TwistPin contacts, offering premium performance and reliability for demanding applications. Available with or without backshell. Backshell option available with shrink boot or overmolding.

**Choose Aluminum or Stainless Steel Shells** in 6 layouts from 4 to 55 contacts. These connectors are intermateable with nanominiature plug connectors 892-006.

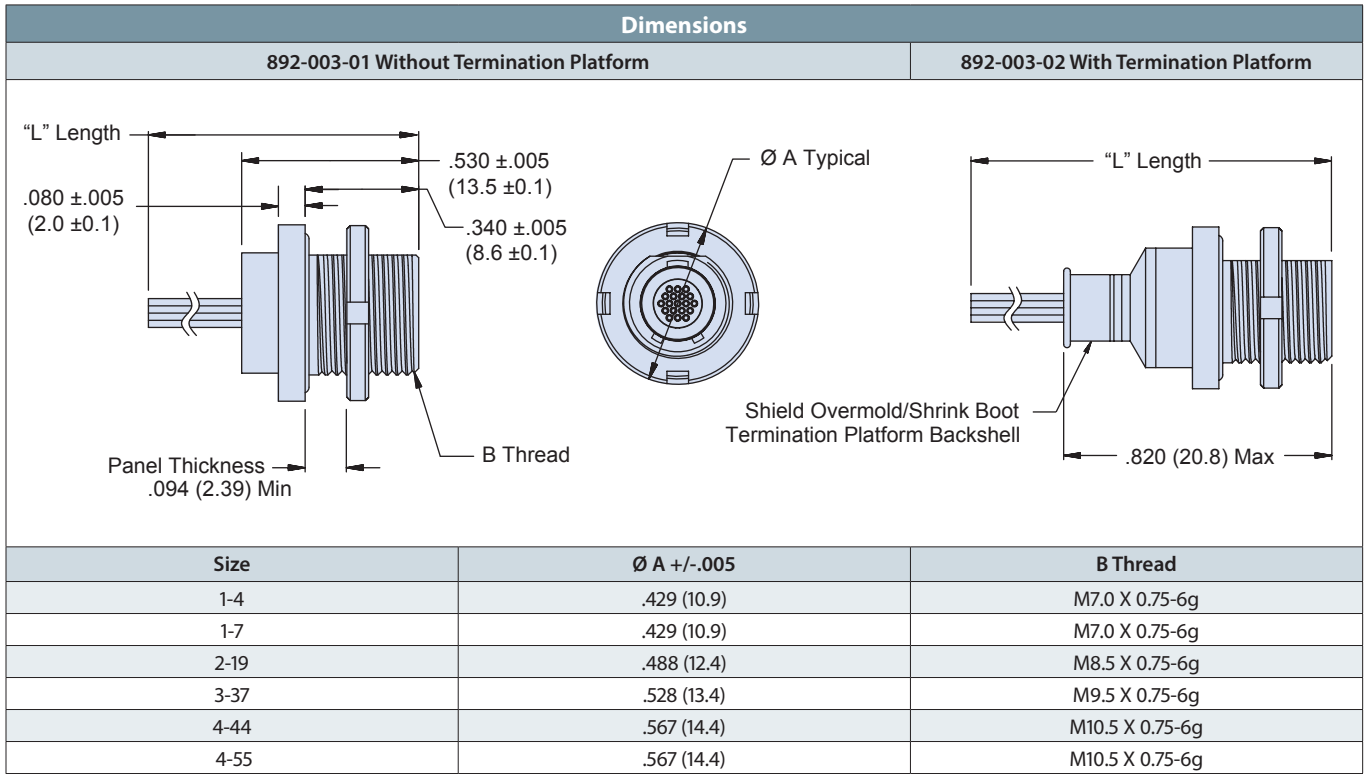
**MATES WITH 892-006**

B

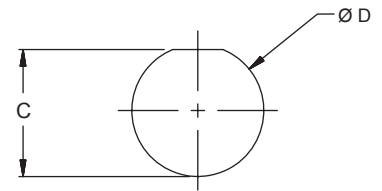
How To Order		892	-003	-02	1-7	N	A2	-0	A	7	-12
<b>Sample Part Number</b>											
<b>Series</b>	892 = Nano Circular with Insulated Wire										
<b>Shell Style</b>	003 = Rear Panel Mount Threaded Coupling Receptacle										
<b>Accessory</b>	01 = No Backshell    02 = With Backshell 03 = Overmolded    04 = Shrink Boot										
<b>Shell Size/Contact Arrangement</b>	1-4 = Shell Size 1 with 4 contacts    3-37 = Shell Size 3 with 37 contacts 1-7 = Shell Size 1 with 7 contacts    4-44 = Shell Size 4 with 44 contacts 2-19 = Shell Size 2 with 19 contacts    4-55 = Shell Size 4 with 55 contacts See Receptacle Mating Face View and Contact Layout Table										
<b>Polarization</b>	N = Normal    A = Alternate										
<b>Shell Material/Finish</b>	A2 = Aluminum/Electroless Nickel    S1 = Stainless Steel/Zinc Cobalt (Black) A5 = Aluminum/Gold Over Nickel    S2 = Stainless Steel/Passivated										
<b>Wire Gauge</b>	0 = 30 AWG    2 = 32 AWG										
<b>Wire Type</b>	A = Ultra Lightweight XLETFE Insulation, Silver Coated Ultra High Strength Copper. (Not available in #32 AWG) B = Extruded PTFE Insulation, Silver Coated Copper NEMA HP3-ETX (MIL-W-16878/6) C = Cross Linked Modified ETFE Insulation, Silver Coated High Strength Copper. MIL-W-22759/33 (Not available in #32 AWG)										
<b>Wire Color</b>	1 = White    2 = Yellow    7 = 10 Color Repeating (Wire type A is striped, types B and C are solid colors)										
<b>Wire Length (Inches)</b>	12 = 12.00 + 1.00 Inches; as required in one inch increments.										

Receptacle Mating Face View and Contact Layout					
Size 1-4 4 Contacts	Size 1-7 7 Contacts	Size 2-19 19 Contacts	Size 3-37 37 Contacts	Size 4-44 44 Contacts	Size 4-55 55 Contacts
					

Rear Panel Mount, Threaded Receptacle with Insulated Wire - Dimensions



Rear Panel Mount Panel Cut-Out		
Size	C +.002 / -.001	ØD +.002 / -.001
1-4	.260 (6.6)	.280 (7.1)
1-7	.260 (6.6)	.280 (7.1)
2-19	.318 (8.1)	.340 (8.6)
3-37	.361 (9.2)	.378 (9.6)
4-44	.401 (10.2)	.420 (10.7)
4-55	.401 (10.2)	.420 (10.7)



**NOTES:**

- Material/finish
  - Shell/spanner nut/backshell - see part number breakdown
  - Insulator - LCP/na
  - Socket contacts - gold alloy
  - O-rings - fluorosilicone/na
  - Internal latching spring - stainless steel/ gold plate

Keyway Positions			
Size	Polarization	A°	B°
1-4	N	150	210
	A	75	210
1-7	N	95	230
	A	140	275
2-19	N	150	210
	A	75	210
3-37	N	150	210
	A	75	210
4-44	N	150	210
	A	75	210
4-55	N	95	230
	A	140	275

