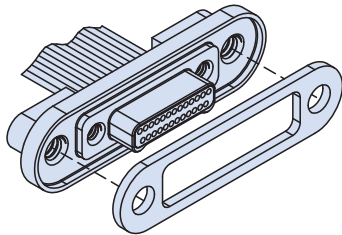




SERIES 89 Dual Row Connectors



Rear Panel Mount Connectors with Insulated Wire and Gasket Seal – How to Order



Rear Panel Mount Nano Connectors with Insulated Wire feature gold alloy TwistPin contacts. Contacts are precision-crimped to insulated, stranded wire. These nanominiature connectors offer premium performance and reliability for

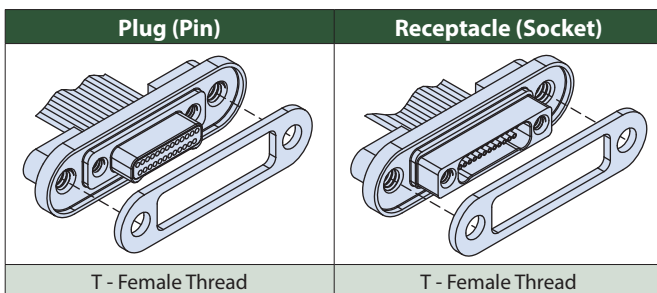
demanding applications. Contact spacing is .025 inches. 1 amp current rating, DWV rating 250 volts AC.

Gasket Seals are available in fluorosilicone, passivated silver plated aluminum filled fluorosilicone or nickel plated aluminum filled fluorosilicone. For replacement gaskets, see 899-015.

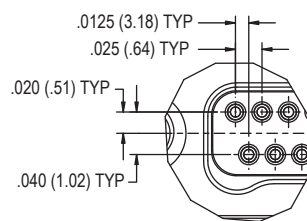
How to Order

Sample Part Number	891-025	-25P	S	-0	B	7	-12	T	-01	M
Series	891-025 = Plug 891-026 = Receptacle									
Insert Arrangement/Contact Type	Plugs (891-025): 9P, 15P, 21P, 25P, 31P, 37P, 41P, 51P, 65P, 69P, 85P Receptacles (891-026): 9S, 15S, 21S, 25S, 31S, 37S, 41S, 51S, 65S, 69S, 85S									
Shell Material and Finish	T = Titanium Shell, Unplated S = Stainless Steel Shell, Passivated									
Wire Gage	0 = #30 AWG 2 = #32 AWG (Wire Type 'B' Only)									
Wire Type	A = Ultra Lightweight XLETFE Insulation, Silver Coated Ultra High Strength Copper. (Not available in #32 AWG) B = Extruded PTFE Insulation, Silver Coated Copper NEMA HP3-ETX (MIL-W-16878/6) C = Cross Linked Modified ETFE Insulation, Silver Coated High Strength Copper. MIL-W-22759/33 (Not available in #32 AWG)									
Wire Color Code	1 = White 2 = Yellow 7 = 10 Color Repeating (Wire Type A is striped, Types B & C are solid colors)									
Wire Length	12 = 12.00 + 1.00 inches; as required in one inch increments.									
Hardware Option	T = Female Threads (#0-80 for size 9-69, #2-56 for size 85)									
Gasket Material	Omit for no gasket 01 = Fluorosilicone IAW MIL-DTL-25988 Type II, Class I, Grade 70 02 = Passivated Silver Plated Aluminum Filled Fluorosilicone IAW MIL-DTL-83528, Type "D" (Cho-seal 1298 or Equivalent) 03 = Nickel Plated, Aluminum Filled Fluorosilicone (Cho-Seal 6503 or Equivalent)									
Mounting Thread	Omit for #2-56 UNC-2B M = M2X0.4 6H									

D



DETAIL A

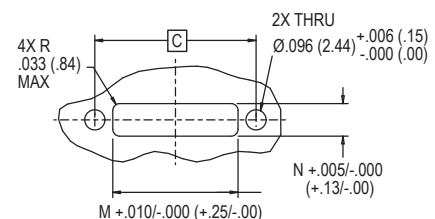


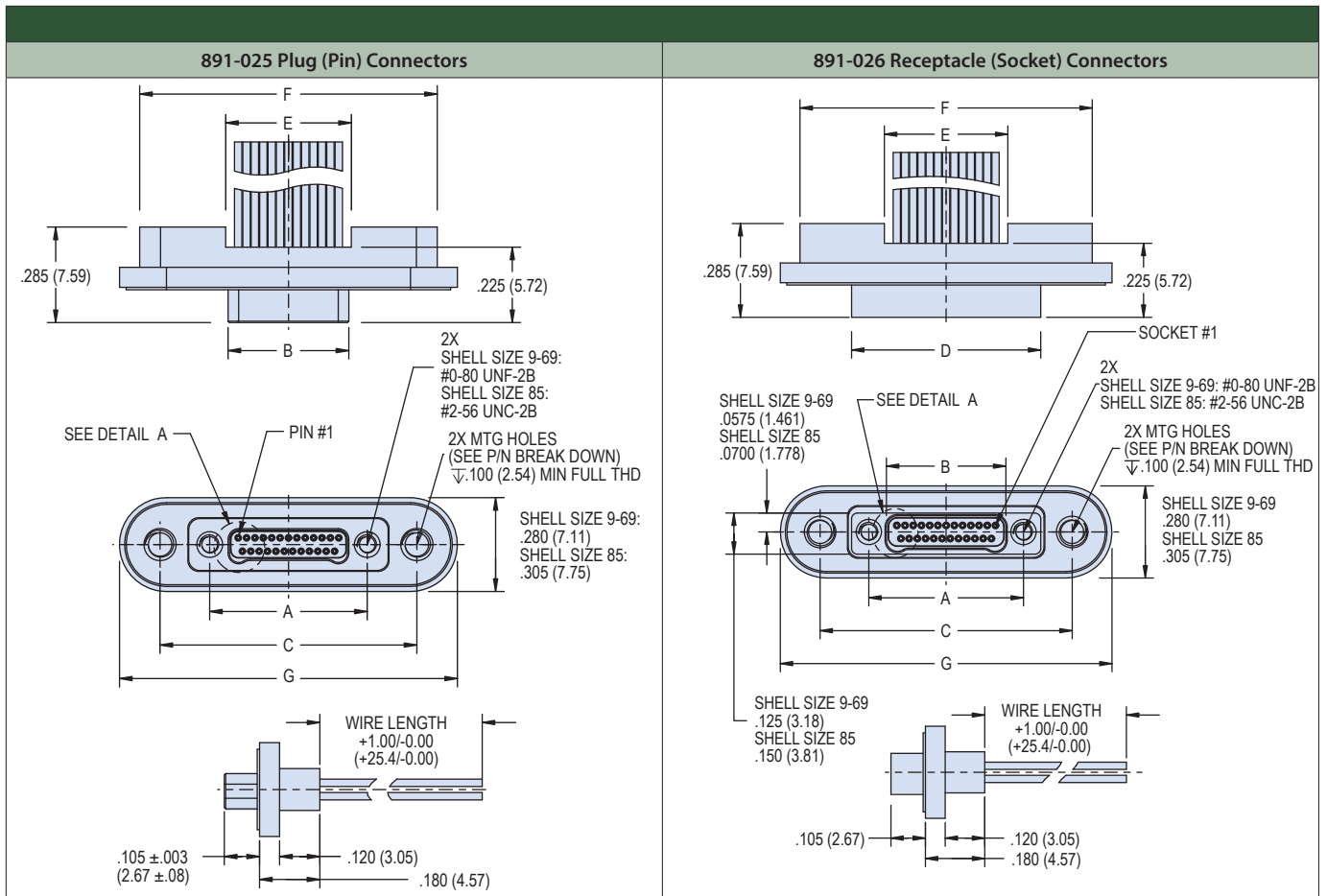
NOTES

1. Inspect and test IAW MIL-DTL-32139
2. Interface dimensions per MIL-DTL-32139, plug (/3) Receptacle (/4)
3. Panel cutout sized to allow lobe up or lobe down mounting orientation
4. Recommended Panel thickness .100 (2.54) max

PANEL MOUNT DIMENSIONS

	SIZE-9	SIZE-15	SIZE-21	SIZE-25	SIZE-31	SIZE-37	SIZE-41	SIZE-51	SIZE-65	SIZE-69	SIZE-85
C	.566 (14.38)	.641 (16.28)	.716 (18.19)	.766 (19.46)	.841 (21.36)	.916 (23.27)	.966 (24.54)	1.091 (27.71)	1.266 (32.16)	1.316 (33.43)	1.568 (39.83)
M	.395 (10.03)	.470 (11.94)	.545 (13.84)	.595 (15.11)	.670 (17.02)	.745 (18.92)	.795 (20.19)	.920 (23.37)	1.095 (27.81)	1.145 (29.08)	1.397 (35.48)
N	.155 (3.94)	.155 (3.94)	.155 (3.94)	.155 (3.94)	.155 (3.94)	.155 (3.94)	.155 (3.94)	.155 (3.94)	.155 (3.94)	.155 (3.94)	.180 (4.57)





Dimensions

Layout	A BSC.		B BSC.		C BSC.		D		E		F		G	
	In	mm	In	mm	In	mm	In	mm	In	mm	In	mm	In	mm
9P	.270	6.86	.160	4.06	.566	14.38	--	--	.175	4.45	.688	17.48	.808	20.52
9S	.270	6.86	.163	4.14	.566	14.38	.375	9.53	.175	4.45	.688	17.48	.808	20.52
15P	.345	8.76	.235	5.97	.641	16.28	--	--	.250	6.35	.763	19.38	.883	22.43
15S	.345	8.76	.238	6.05	.641	16.28	.450	11.43	.250	6.35	.763	19.38	.883	22.43
21P	.420	10.67	.310	7.87	.716	18.19	--	--	.325	8.26	.838	21.29	.958	24.33
21S	.420	10.67	.313	7.95	.716	18.19	.525	13.34	.325	8.26	.838	21.29	.958	24.33
25P	.470	11.94	.360	9.14	.766	19.46	--	--	.375	9.53	.888	22.56	1.008	25.60
25S	.470	11.94	.363	9.22	.766	19.46	.575	14.61	.375	9.53	.888	22.56	1.008	25.60
31P	.545	13.84	.435	11.05	.841	21.36	--	--	.450	11.43	.963	24.46	1.083	27.51
31S	.545	13.84	.438	11.13	.841	21.36	.650	16.51	.450	11.43	.963	24.46	1.083	27.51
37P	.620	15.75	.510	12.95	.916	23.27	--	--	.525	13.34	1.038	26.37	1.158	29.41
37S	.620	15.75	.513	13.03	.916	23.27	.725	18.42	.525	13.34	1.038	26.37	1.158	29.41
41P	.670	17.02	.560	14.22	.966	24.54	--	--	.575	14.61	1.088	27.64	1.208	30.68
41S	.670	17.02	.563	14.30	.966	24.54	.775	19.69	.575	14.61	1.088	27.64	1.208	30.61
51P	.795	20.19	.685	17.40	1.091	27.71	--	--	.700	17.78	1.213	30.81	1.333	33.86
51S	.795	20.19	.688	17.48	1.091	27.71	.900	22.86	.700	17.78	1.213	30.81	1.333	33.86
65P	.970	24.64	.860	21.84	1.266	32.16	--	--	.875	22.23	1.388	35.26	1.508	38.30
65S	.970	24.64	.863	21.92	1.266	32.16	1.075	27.31	.875	22.23	1.388	35.26	1.508	38.30
69P	1.020	25.91	.910	23.11	1.316	33.43	--	--	.925	23.50	1.438	36.53	1.558	39.57
69S	1.020	25.91	.913	23.19	1.316	33.43	1.125	28.58	.925	23.50	1.438	36.53	1.558	39.57
85P	1.246	31.65	1.110	28.19	1.568	39.83	--	--	1.125	28.58	1.690	42.93	1.810	45.97
85S	1.246	31.65	1.113	28.27	1.568	39.83	1.377	34.98	1.125	28.58	1.690	42.93	1.810	45.97

