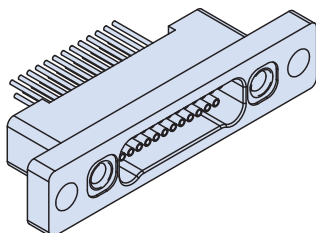


Front Panel Mount Receptacle with Uninsulated Wire How to Order



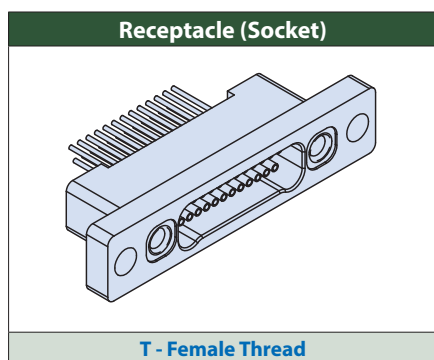
Front Panel Mount Receptacles with Uninsulated Wire feature gold alloy TwistPin contacts. Contacts are precision-crimped to solid wire. These nanominiature connectors offer premium performance and reliability for demanding applications. Contact spacing is .025 inches. 1 amp current rating, DWV rating 250 volts AC. Wire gages #30 and #32 AWG

TwistPin Contact System assures premium performance in demanding environments. The gold alloy contacts will stand up to years of exposure without corrosion.

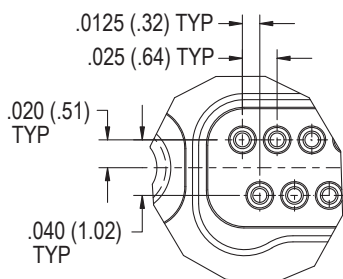
Typical Applications include UAV's, satellites, missile systems and geophysical instruments.

How to Order	
Sample Part Number	891-053 -25S A2 -0 D3 -.125 T C
Series	891-053 = Receptacle
Insert Arrangement/ Contact Type	9S, 15S, 21S, 25S, 31S, 37S, 41S, 51S, 65S, 69S, 85S
Shell Material and Finish	A1 = Aluminum Shell, Cadmium Plating T = Titanium Shell, Unplated A2 = Aluminum Shell, Electroless Nickel Plating S = Stainless Steel Shell, Passivated
Wire Gage	0 = #30 AWG 2 = #32 AWG
Wire Type	D3 = Single Strand Copper Wire, Uninsulated, with Gold Plating
Wire Length	.070, .125, .250, .375, .500, 1.000
Hardware Option	T = Female Threads (#0-80 for size 9-69, #2-56 for size 85) Passivated 303 stainless steel inserts installed in aluminum shells, otherwise tapped directly into shell
Mounting Hole Option	C = Clearance Hole T = Female Thread

D



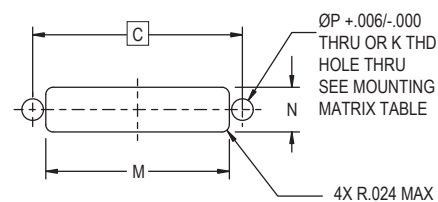
891-053 DETAIL A



Panel Mount Connector Mounting Matrix		
Connector Holes	Panel Holes	Mounting Location
Tapped	Clearance	Rear Panel Mount
Clearance	Tapped	Front Panel Mount
Clearance	Clearance	Front or Rear Panel Mount with screw and nut

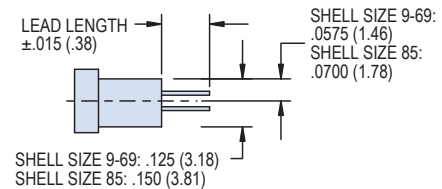
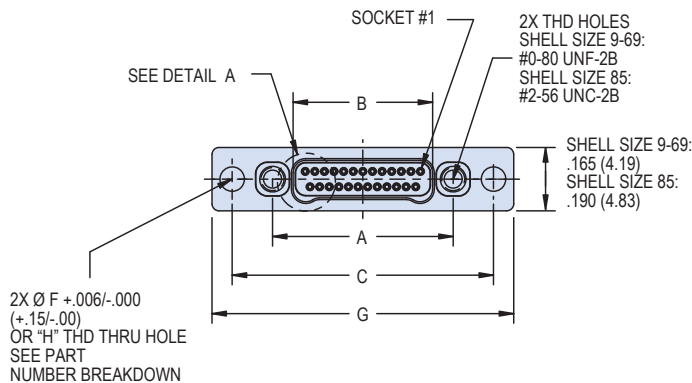
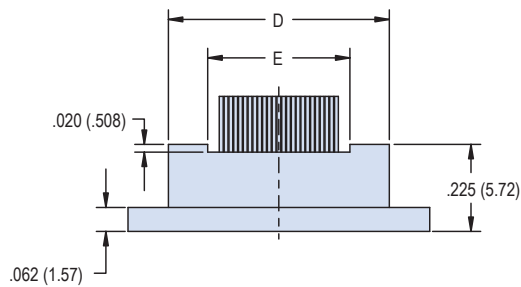
PANEL MOUNT DIMENSIONS

	SIZE-9	SIZE-15	SIZE-21	SIZE-25	SIZE-31	SIZE-37	SIZE-41	SIZE-51	SIZE-65	SIZE-69	SIZE-85
C	.480 (12.19)	.555 (14.10)	.630 (16.00)	.680 (17.27)	.755 (19.18)	.830 (21.08)	.880 (22.35)	1.005 (25.52)	1.180 (29.97)	1.230 (31.24)	1.527 (38.79)
K	#0-80 UNF-2B										#2-56 UNC-2B
M	.395 (10.03)	.470 (11.94)	.545 (13.84)	.595 (15.11)	.670 (17.02)	.745 (18.92)	.795 (20.19)	.920 (23.37)	1.095 (27.81)	1.145 (29.08)	1.397 (35.48)
N	.145 (3.68)										.170 (4.32)
P	.070 (1.78)										.096 (2.44)



Dimensions

891-053 Receptacle (Socket) Connector



Layout	A BSC.		B BSC.		C BSC.		D		E		F		G		H
	In	mm	In	mm	In	mm	In	mm	In	mm	In	mm	In	mm	
9S	.270	6.86	.163	4.14	.480	12.19	.375	9.53	.170	4.32	.0635	1.61	.585	14.86	#0-80 UNF-2B
15S	.345	8.76	.238	6.05	.555	14.10	.450	11.43	.245	6.22	.0635	1.61	.660	16.76	#0-80 UNF-2B
21S	.420	10.67	.313	7.95	.630	16.00	.525	13.34	.320	8.13	.0635	1.61	.735	18.67	#0-80 UNF-2B
25S	.470	11.94	.363	9.22	.680	17.27	.575	14.61	.370	9.40	.0635	1.61	.785	19.94	#0-80 UNF-2B
31S	.545	13.84	.438	11.13	.755	19.18	.650	16.51	.445	11.30	.0635	1.61	.860	21.84	#0-80 UNF-2B
37S	.620	15.75	.513	13.03	.830	21.08	.725	18.42	.520	13.21	.0635	1.61	.935	23.75	#0-80 UNF-2B
41S	.670	17.02	.563	14.30	.880	22.35	.775	19.69	.570	14.48	.0635	1.61	.985	25.02	#0-80 UNF-2B
51S	.795	20.19	.688	17.48	1.005	25.53	.900	22.86	.695	17.65	.0635	1.61	1.110	28.19	#0-80 UNF-2B
65S	.970	24.64	.863	21.92	1.180	29.97	1.075	27.31	.870	22.10	.0635	1.61	1.285	32.64	#0-80 UNF-2B
69S	1.020	25.91	.913	23.19	1.230	31.24	1.125	28.58	.920	23.37	.0635	1.61	1.335	33.91	#0-80 UNF-2B
85S	1.246	31.65	1.113	28.27	1.527	38.79	1.377	34.98	1.120	28.45	.0890	2.26	1.677	42.60	#2-56 UNC-2B

NOTES

- Inspect and test IAW MIL-DTL-32139
- Interface receptacle dimensions per MIL-DTL-32139/4
- Panel cutout sized to allow lobe up or lobe down mounting orientation
- Connector may be mounted to front or back of panel depending on selected mounting hole option
- Recommended panel thickness .100 (2.54) max
- Materials/finishes
 - Shell: see part number break down
 - Insulator: LCP/N/A
 - Contacts: gold alloy / unplated
 - Wire: copper alloy/gold plated
 - Jacking hardware: see part number break down

