

Table of contents

TABLE OF CONTENTS

THE POWERLOAD ECOSYSTEM

Solution overview and performance data



Fully tested and qualified, PowerLoad technical data includes:

- PowerLoad ecosystem solution performance overview
- Compression grommet series technical specifications
- **Crown Ring contact** current carrying capacity tables
- Series performance specifications and test reports
- Contact arrangements and polarization

POWERLOAD CONNECTORS

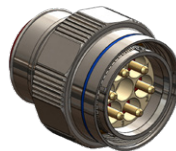
Crimp contact series with compression grommet for TurboFlex or tape-wrapped wire



- 972-101** Plug with banding backshell
- 972-102** Wall-mount receptacle with banding backshell
- 972-103** Jam-nut receptacle with banding backshell
- 972-203** Feed-thru receptacle, jam-nut mount
- 850-150** and **-151** Crown Ring contacts

POWERLOAD CONNECTORS

Bus bar / lug contact series with bonded grommet for use with TurboFlex extruded wire



- 972-011** Plug with banding platform
- 972-012** Wall-mount receptacle with banding platform
- 972-013** Jam-nut receptacle with banding platform
- 850-323** and **-324** bus bar/lug contacts

POWERLOAD ACCESSORIES

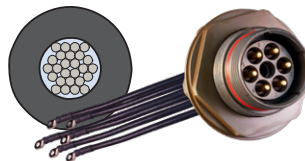
Heavy-duty for large power cables



- 390PX055** EMI/RFI Environmental Backshell, St., 45°, 90°
- 4470PXS1128** Compression Backshell with Band Platform
- 770-001S** Environmental heat shrink boots
- 660-128** PowerLoad receptacle protective cover
- 660-129** PowerLoad plug protective cover
- 930-026** Gasket for flange-mount connectors
- 600-289** Connector holding tools
- 600-286** "Crow's Foot" plug-to-receptacle torquing wrench
- 600-288** "Crow's Foot" backshell torquing wrench

TURBOFLEX HOOKUP

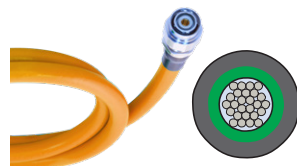
Cabling with FEP and Duraelectric insulation



- 961-102-2000** FEP insulation, 2000 VAC
- 961-106-1500** Duraelectric insulation, 1500 VAC
- 961-106-2000** Duraelectric insulation, 2000 VAC
- 961-108-1500** Duraelectric Light insulation, 1500 VAC
- 961-108-2000** Duraelectric Light insulation, 2000 VAC

TURBOFLEX INTERCONNECT

Cabling with FEP and Duraelectric insulation



- 961-103-2000** FEP insulation, FEP outer jacket, 2000 VAC
- 961-104-2000** FEP insulation, Duraelectric outer jacket, 2000 VAC
- 961-107-1500** Duraelectric insulation, Duraelectric outer jacket, 1500 VAC
- 961-107-2000** Duraelectric insulation, Duraelectric outer jacket, 2000 VAC
- 961-109-1500** Duraelectric Light insulation and outer jacket, 1500 VAC
- 961-109-2000** Duraelectric Light insulation and outer jacket, 2000 VAC