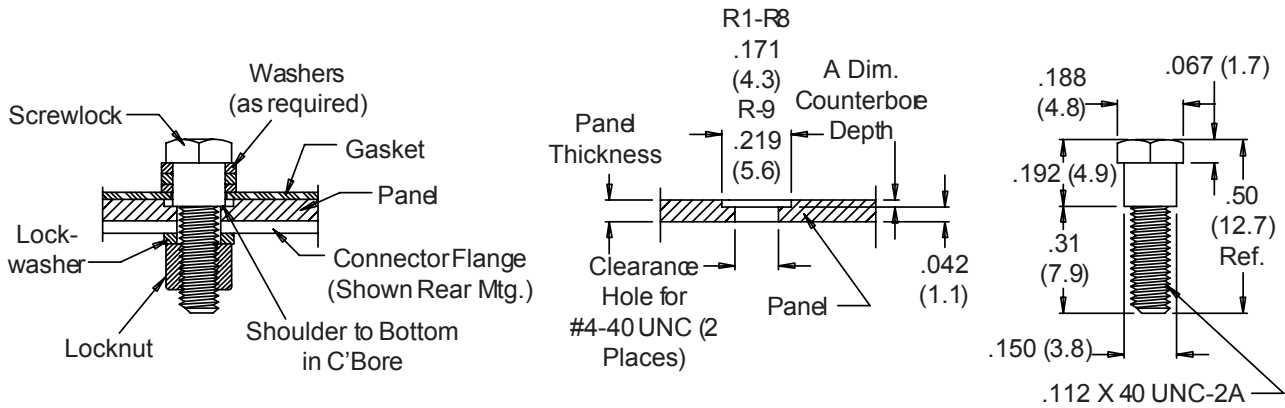


# 559-001 D-Subminiature Backshells Mounting Kit For Rear Mounted Receptacle Connectors

Basic Part No. 559-001 -49  
 Material \_\_\_\_\_  
 -49 = Stainless Steel/Passivated  
 Omit for Cold Rolled Steel/Cadmium Plated



Dash No.	Panel Thickness	A Dim Counterbore Depth	Washers Required
R1	.031 (.8)	n/a	4
R2	.047 (1.2)	n/a	4
R3	.062 (1.6)	.020 (.5)	3
R4	.093 (2.4)	.051 (1.3)	2
R5	.104 (2.6)	.062 (1.6)	1
R6	.125 (3.2)	.083 (2.1)	1
R7	.156 (4.0)	.114 (2.9)	2
R8	.140 (3.5)	.098 (2.5)	2
R9	.188 (4.8)	.146 (3.7)	2

1. Mounting Kit includes two assemblies consisting of: 1 Screwlock, 1 Lockwasher, 1 Locknut, and 4 Washers per assembly.
2. Metric dimensions (mm) are indicated in parentheses.
3. Finish: Yellow Chromate
4. Use M24308/26 Female Screwlock for Front Mounted Receptacle Connectors.