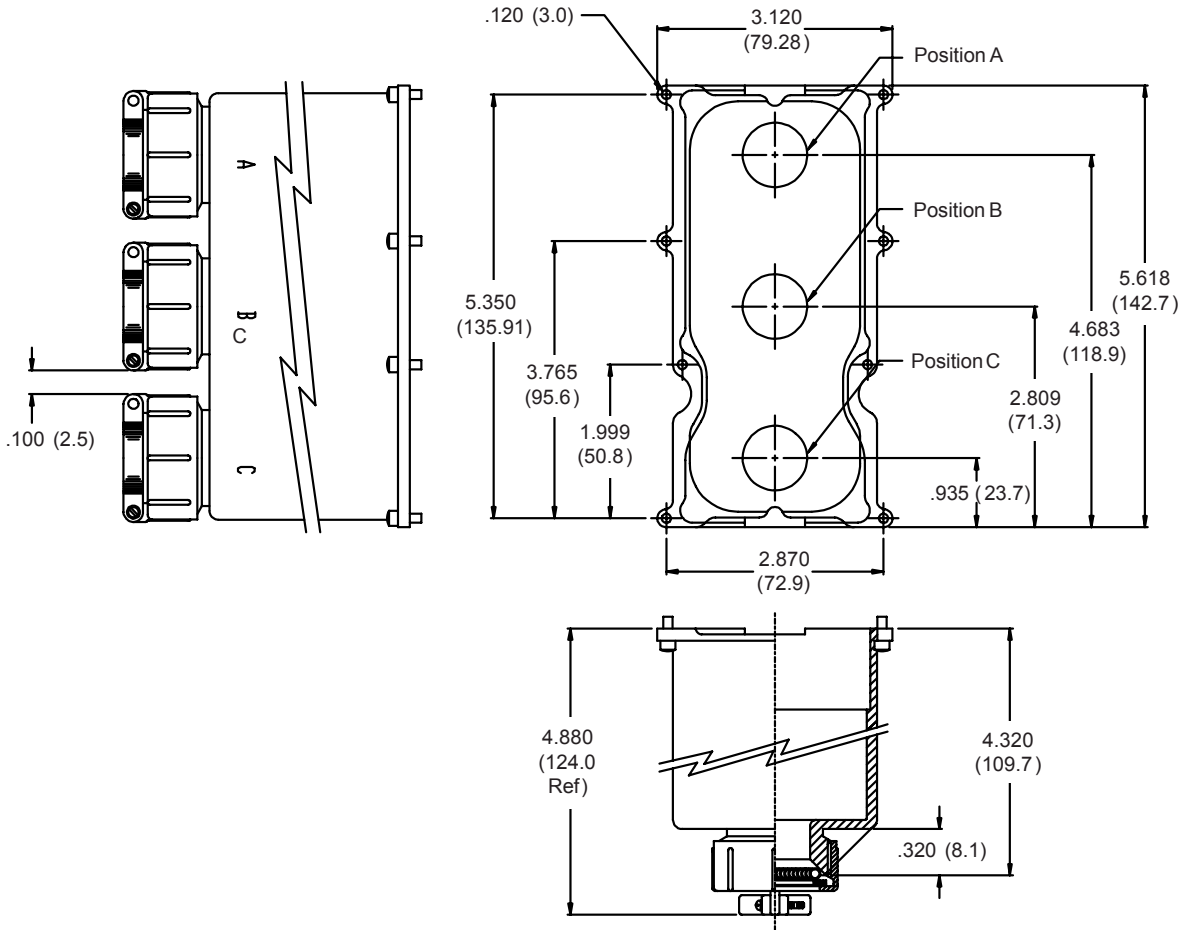
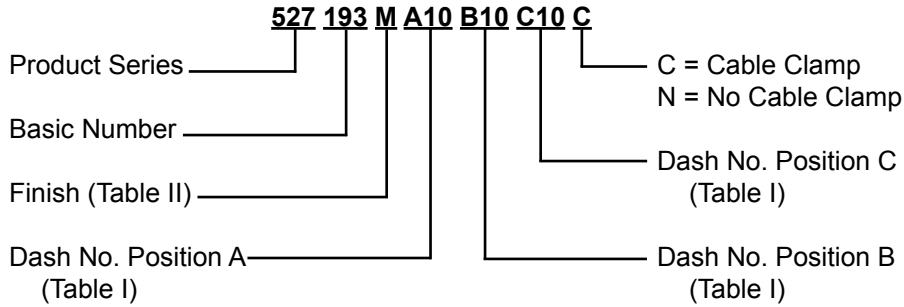




527-193 EMI/RFI Backshell Assembly for Size 3 ARINC 600 Series Connectors



Metric dimensions (mm) are indicated in parentheses.

527-193
EMI/RFI Backshell Assembly
for Size 3 ARINC 600 Series Connectors



TABLE I: CABLE ENTRY

| Dash No. | Cable Range | | X Dia |
|----------|--------------|--------------|--------------|
| | Min | Max | |
| 01 | .062 (1.6) | .125 (3.2) | .620 (15.7) |
| 02 | .125 (3.2) | .250 (6.4) | .750 (19.1) |
| 03 | .157 (4.0) | .375 (9.5) | .870 (22.1) |
| 04 | .282 (7.2) | .500 (12.7) | 1.000 (25.4) |
| 05 | .407 (10.3) | .625 (15.9) | 1.120 (28.4) |
| 06 | .532 (13.5) | .750 (19.1) | 1.250 (31.8) |
| 07 | .657 (16.7) | .875 (22.2) | 1.370 (34.8) |
| 08 | .782 (19.9) | 1.000 (25.4) | 1.500 (38.1) |
| 09 | .907 (23.0) | 1.125 (28.6) | 1.620 (41.1) |
| 10 | 1.032 (26.2) | 1.250 (31.8) | 1.750 (44.5) |

TABLE II: FINISH OPTIONS

| Symbol | Finish |
|--------|---|
| B | Cadmium Plate/Olive Drab |
| C* | Black Anodize |
| G* | Anodic Hard Coat |
| J | Gold Iridite over Cadmium Plate over Electroless Nickel |
| LF | Cadmium Plate/Bright over Electroless Nickel |
| M | Electroless Nickel |
| N | Cadmium Plate/Olive Drab over Electroless Nickel |
| NC | Zinc Cobalt/Dark Olive Drab |
| NF | Cadmium Plate/Olive Drab over Electroless Nickel |
| T | Cadmium Plate/Bright over Electroless Nickel |
| U** | Cadmium Plate/Black |
| ZN | Zinc-Nickel Alloy/Olive Drab |

*Anodize finish is not suitable for EMI shielding or grounding applications.

**Applicable to corrosion resisting steel backshells and accessories. Consult factory for other available finishes.

TABLE III: CONNECTOR DESIGNATOR

ARINC 600 series connector backshells are designed to replace the insert retainer plates. Due to non-standard modifications by the connector manufacturer, the backshell may require special design alterations to mate properly. The following should be used to determine if a backshell modification is required. Prior to ordering, consult factory with connector part numbers not shown to ensure a proper fit.

| Connector Designator | Connector Description |
|----------------------|---|
| P1 | Cannon BKAD****322 Series Plug |
| P2 | Cannon/Radiall Environmental Plug |
| P3 | Cannon/Boeing BACC 66 Plug |
| P5 | Radiall/Boeing BACC66 Plug |
| P6 | Cannon BKAC & BKAE XXX322 Series Environmental Plug |

Metric dimensions (mm) are indicated in parentheses.