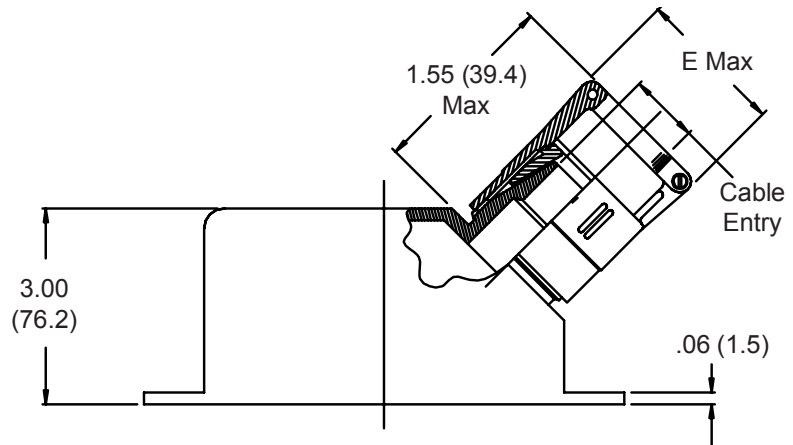
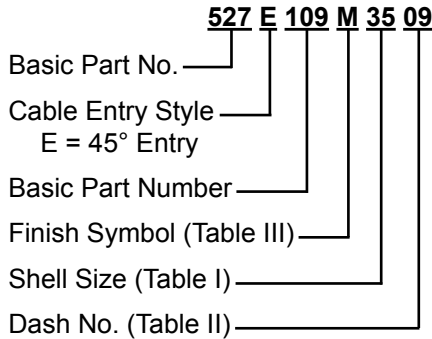


527-109 Solid EMI/RFI Strain-Relief Backshell for Hypertronics NPB-Y Connectors



Hypertronics



1. Metric dimensions (mm) are indicated in parentheses.
2. Material/Finish:
 Backshell = Al Alloy/See Table III
 Hardware = SST/Passivate

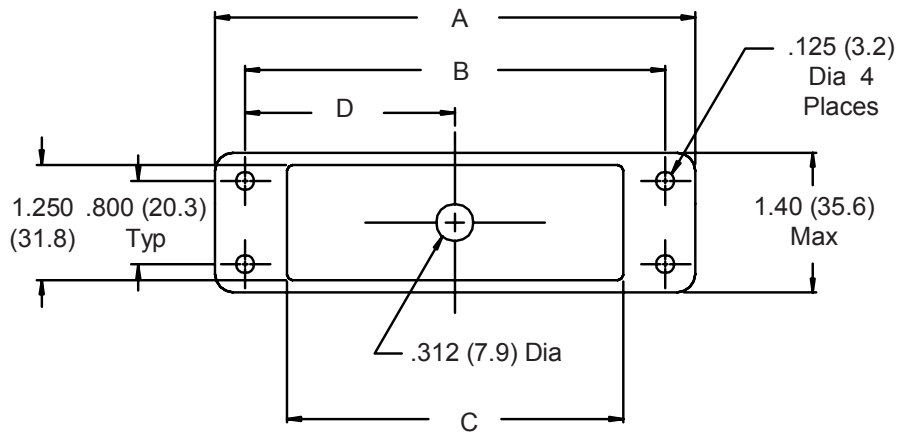


TABLE I: SHELL SIZE & CONNECTOR INTERFACE									
Shell Size	A Dim		B Dim		C Dim		D Dim		
31	3.77	(95.8)	3.400	(86.4)	3.120	(79.2)	1.700	(43.2)	
35	4.17	(105.9)	3.800	(96.5)	3.520	(89.4)	1.900	(48.3)	
45	5.17	(131.3)	4.800	(121.9)	4.520	(114.8)	2.400	(61.0)	

TABLE II: CABLE ENTRY				
Dash No.	E Max	Cable Range		
		Min	Max	
01	.781 (19.8)	.062 (1.6)	.125 (3.2)	
02	.968 (24.6)	.125 (3.2)	.250 (6.4)	
03	1.406 (35.7)	.250 (6.4)	.375 (9.5)	
04	1.156 (29.4)	.375 (9.5)	.500 (12.7)	
05	1.218 (30.9)	.500 (12.7)	.625 (15.9)	
06	1.343 (34.1)	.625 (15.9)	.750 (19.1)	
07	1.468 (37.3)	.750 (19.1)	.875 (22.2)	
08	1.593 (40.5)	.875 (22.2)	1.000 (25.4)	
09	1.718 (43.6)	1.000 (25.4)	1.125 (28.6)	
10	1.843 (46.8)	1.125 (28.6)	1.250 (31.8)	

TABLE III - FINISH OPTIONS	
Symbol	Finish
B	Cadmium Plate, Olive Drab
J	Iridite, Gold Over Cadmium Plate over Nickel
M	Electroless Nickel
N	Cadmium Plate, Olive Drab, Over Nickel
NF	Cadmium Plate, Olive Drab, Over Electroless Nickel (1000 Hour Salt Spray)
T	Cadmium Plate, Bright Dip Over Nickel (500 Hour Salt Spray)

CONSULT FACTORY FOR
OTHER AVAILABLE FINISHES