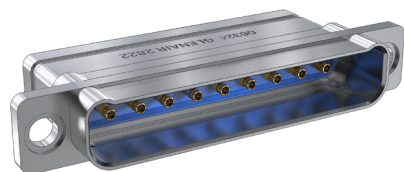


795-010P
 Cable Receptacle, Pin Contacts

- Size #16 Contacts
- 65 GHz SMPS Coax
- All-Aluminum Body
- Environmental
- Two to Seventeen Ports
- Scoop-Proof



Three to eleven ports. Size 16 contacts. 795-010 receptacles have machined aluminum housings and fluorosilicone grommet for environmental protection. Size 16 pin contact cavities have beryllium copper retention clips. Use with 65 GHz SMPS coax contacts (P/N 852-133, ordered separately).

CONSTRUCTION

- Shell: aluminum
- Grommet: fluorosilicone
- Jackscrew: SST, passivated
- Contact retainer clip: copper alloy, unplated

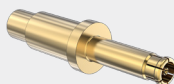
SPECIFICATIONS

- Operating temperature: -55 °C to +125 °C
- Shock: EIA-364-27 Condition D
- Vibration: EIA-364-28 Condition V Letter E
- Shell-to-shell resistance: 2.5 milliohms max. with ground spring option

COAX CONTACTS

*Not included with 795-010 connector.
 Sold separately.*

for S/R or Flexible Coax Cable



- See contacts reference page at the beginning of this section for compatible size #16 socket contacts

PART NUMBER

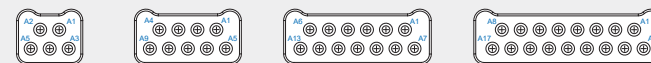
	795-010P	16-1RF9	M	L
Base P/N	795-010P			
Arrangement No.	See Table 1 16-1RF2 2 contacts 16-2RF5 5 contacts, two row 16-1RF3 3 contacts 16-2RF9 9 contacts, two row 16-1RF5 5 contacts 16-2RF13 13 contacts, two row 16-1RF7 7 contacts 16-2RF17 17 contacts, two row 16-1RF9 9 contacts			
Finish	M Electroless Nickel MT Nickel-PTFE NF Olive Drab Cadmium TZ Tin-Zinc ZR Black Zinc-Nickel			
Hardware Option	See Table 2 L Jackscrews, Socket Head #8-32, non-removable K Extended Jackscrews Slot Head #8-32, non-removable S Low-Profile Socket Head Screwlock #8-32, non-removable T Extended Screwlock, Knurled Head #8-32, non-removable P Jackposts #8-32, with nut and lock washer N No Hardware .198 (5.0) diameter thru-holes			

TABLE 1 ARRANGEMENT NUMBER

Optimized for Size #16 SMPS Contacts



Cable diameter: .086" Max



Max Freq: 65 GHz

TABLE 2 HARDWARE OPTION

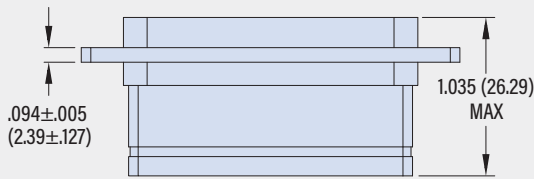
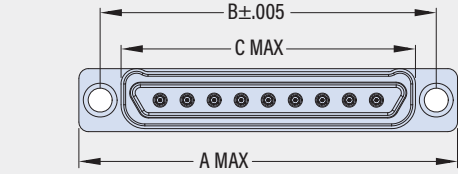
L	K	S	T	P	N
Socket Head Captive Jackscrew, #8-32	Extended Captive Jackscrew, #8-32	Low-Profile Socket Head Captive Screwlock	Extended Captive Screwlock, Knurled Head	Jackpost, Nut and Lock washer, #8-32	No Jackscrew

795-010P
 Cable Receptacle, Pin Contacts

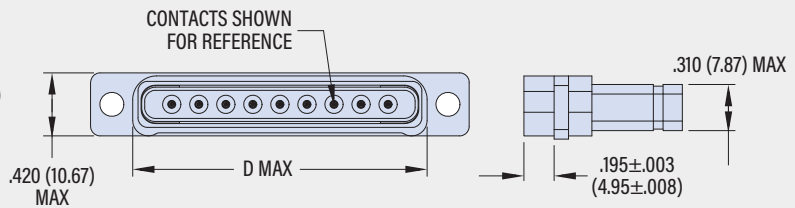
- Size #16 Contacts
- All-Aluminum Body
- Two to Seventeen Ports
- 65 GHz SMPS Coax
- Environmental
- Scoop-Proof

SERIES 795 MULTI-PIN RF CONNECTORS

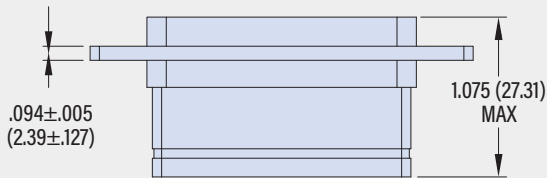
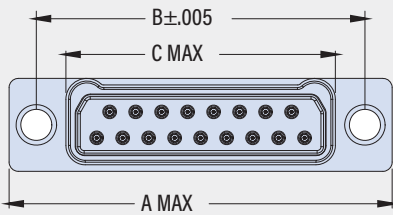
795-010P SINGLE ROW



Arrangement Number	B				C Max.		D Max.	
	A Max in	A Max mm	±.005 (0.13) in	±.005 (0.13) mm	in	mm	in	mm
16-1RF2	1.185	30.01	.900	22.86	.635	16.13	.567	14.40
16-1RF3	1.410	35.81	1.125	25.58	.860	21.84	.792	20.12
16-1RF5	1.710	43.43	1.425	36.20	1.160	29.46	1.092	27.74
16-1RF7	2.085	52.96	1.800	45.72	1.535	38.99	1.467	37.26
16-1RF9	2.460	62.48	2.175	55.25	1.910	48.51	1.842	46.79



795-010P DUAL ROW



Arrangement Number	B				C Max.		D Max.	
	A Max in	A Max mm	±.005 (0.13) in	±.005 (0.13) mm	in	mm	in	mm
16-2RF5	1.450	36.83	1.075	27.31	.685	17.40	.610	15.49
16-2RF9	1.825	46.35	1.450	36.83	1.060	26.92	.985	25.02
16-2RF13	2.200	55.88	1.825	46.36	1.435	36.45	1.360	34.54
16-2RF17	2.575	65.41	2.200	55.88	1.810	45.97	1.780	45.21

