

852-157
852-256

- Size 8
- 50 Ohm
- 18 GHz BMB Style

- G-LinkRF
- Female SMA Adapter
- Integral Release Sleeve

50 Ohm

G-LinkRF

Pin Contact

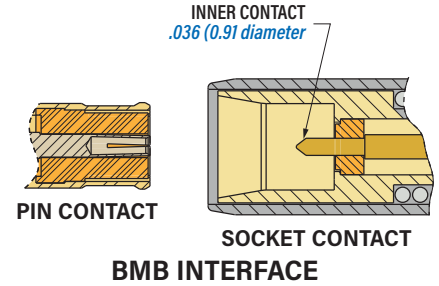


Socket Contact

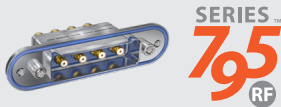
G-LinkRF. SMA adapter. 18 GHz. 50 ohm. Size 8. Snap-in, rear release coax contacts fit Glenair Series 795 and Series 806 RF connectors with size 8 contact cavities. BMB-style contact features G-LinkRF female SMA adapter and integral release sleeve. Attach male SMA plug directly to contact, no soldering required. 50 ohm nominal impedance. DC - 18 GHz frequency range.

PART NUMBER

Pin Contact	Socket Contact
852-157	852-256



CONNECTOR COMPATIBILITY



- Series 795 connectors with size 8 contact cavities



- Series 806 RF connectors with size 8 RF contact cavities (806 RF size 8 contacts are not compatible with standard Series 806)

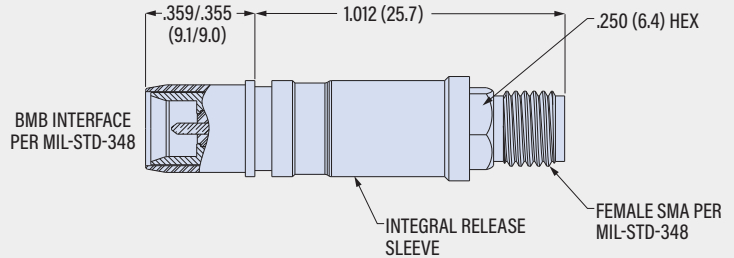
CONSTRUCTION

- Center contact: copper alloy, gold over nickel plating
- Dielectric: fluoropolymer
- SMA Body: copper alloy, gold over nickel plating
- Front Body: copper alloy, gold over nickel plating
- Socket contact outer sleeve: SST, passivated
- Socket contact spring: SST, passivated
- Integral release sleeve: SST, passivated

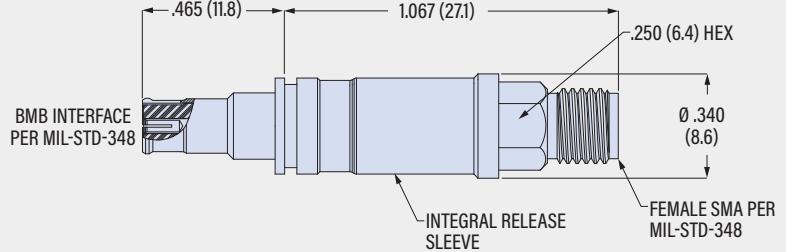
SPECIFICATIONS

- Operating temperature: -55 °C to +125 °C
- Dielectric withstanding voltage: 1000 Vac rms
- Frequency range: DC - 18 GHz
- VSWR: 1.45 maximum
- Impedance: 50 ohms
- Durability: 500 mating cycles

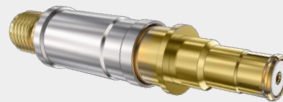
852-256 SOCKET CONTACT



852-157 PIN CONTACT



G-LinkRF



18 GHz **G-LinkRF** contacts have a BMB-style mating end and a female SMA interface on the back end. Compatible with connectors with size 8 rear-release contact arrangements.

SERIES 795 MULTI-PIN RF CONNECTORS