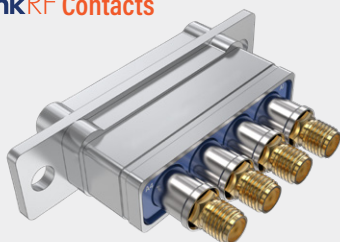


Selection Guide

SERIES 795 Multi-Port RF Rectangular Connectors

- Seven layouts for two to nine RF ports (contacts sold separately)
- Rugged one-piece aluminum housing
- Environmental
- Scoop-proof interface
- EMI spring
- BMB-style spring-loaded coax contacts
- Snap-in, rear-release contacts

G-Link^{RF} Contacts



26.5 GHz G-Link^{RF} contacts have a BMB-style mating end and a female SMA interface on the back end. Attach a standard SMA plug cable to the G-Link RF contact.

Series 795 connectors accommodate up to nine size 8 BMB-style coax contacts. Contacts snap into connector body and are removable. Environmentally protected with fluorosilicone face seal and rear grommet. One piece connector shell provides a common ground plane and also eliminates EMI radiation through the connector.

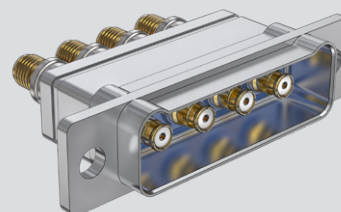
Panel mount receptacle has conductive fluorosilicone O-ring for ingress protection. #8-32 jackscrews provide secure mating in high vibration environments.



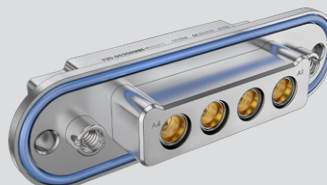
Connector Selection Guide



795-001S
 Cable Plug
 (Socket Contacts)
 Page 58



795-002P
 Cable Receptacle
 (Pin Contacts)
 Page 60



795-003S
 Panel Mount Plug
 (Socket Contacts)
 Page 62



795-004P
 Panel Mount Receptacle
 (Pin Contacts)
 Page 64

SERIES 795 MULTI-PIN RF CONNECTORS