

# Selection Guide

SUPERNINE MULTI-PIN RF CONNECTORS

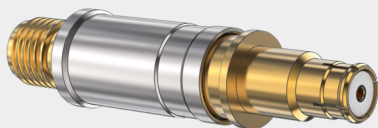
## SuperNine RF Multi-Port RF Circular Connectors

- Fifteen MIL-STD-1560 layouts for size #8, #12, or #16 RF contacts (sold separately)
- Rugged aluminum or stainless steel shells
- Environmental
- Scoop-proof interface
- EMI spring on plugs
- Snap-in, rear-release contacts

### CONSTRUCTION

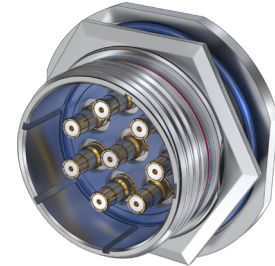
- Shell: aluminum or stainless steel
- Seal/Grommet: fluorosilicone blend
- Ground Spring: copper alloy

### G-Link<sup>RF</sup> Contacts

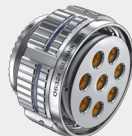


18 GHz G-Link<sup>RF</sup> contacts have a BMB-style mating end and a female SMA interface on the back end. Attach a standard SMA plug cable to the G-Link RF contact.

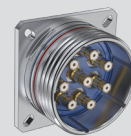
One to 29 contacts, Size 8, 12, or 16. 233-290 connectors have machined aluminum or stainless steel shells and fluorosilicone grommet for environmental protection. Plugs feature a copper alloy ground spring for EMI protection. Fifteen contact layouts available in eight different shell sizes. Supplied without contacts, order #8 BMB, #12 SMPM, or #16 SMPS contacts separately.



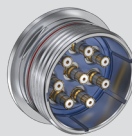
## Connector Selection Guide



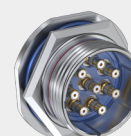
**233-290-G6**  
Plug, EMI Spring  
Page 17



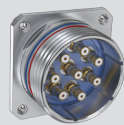
**233-290-00**  
Wall-Mount Receptacle  
Page 18



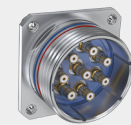
**233-290-05**  
In-Line Receptacle  
Page 19



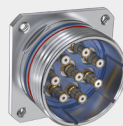
**233-290-07**  
Jam Nut Receptacle  
Page 19



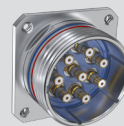
**233-290-CS**  
Wall Mount Receptacle, Standard  
Clinch Nuts  
Page 20



**233-290-CM**  
Wall Mount Receptacle, Metric  
Clinch Nuts  
Page 20



**233-290-HS**  
Wall Mount Receptacle,  
Standard Helicoils  
Page 21



**233-290-HM**  
Wall Mount Receptacle,  
Metric Helicoils  
Page 21



**2333-2002**  
Connector Receptacle Code  
Red Lightweight Hermetic  
Page 22