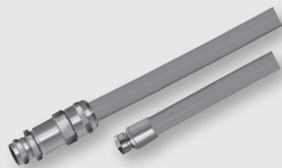


**“BlueJacket” Shipboard Connector and  
MIL-PRF-24758A Conduit Solutions  
Table of Contents**



MIL-PRF  
24758A



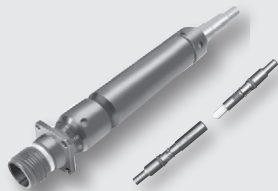
**MIL-PRF-24758A EMI/EMP Conduit Systems**

**A**



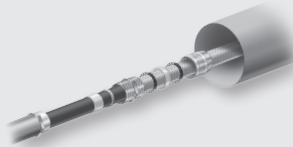
**MIL-DTL-28840 Shipboard Electrical Connectors**

**B**



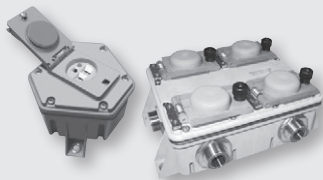
**MIL-PRF-28876 Type Fiber Optic Shipboard Connectors**

**C**



**GA-CSGA Cable Shield Grounding Assemblies**

**D**



**Composite Thermoplastic EMI/EMP Junction Boxes**

**E**



**Shipboard Wire and Cable Feedthroughs**

**F**



**Appendix:**  
S9407-AB-HBK-010 Shipboard EMI Shielding Practices Handbook  
Glenair Qualified GR 2000 and RP2000 Series Fittings  
MasterSeal Self-Vulcanizing Tape  
Selected Materials and Finishes  
Accessory Interface Data

**G**