

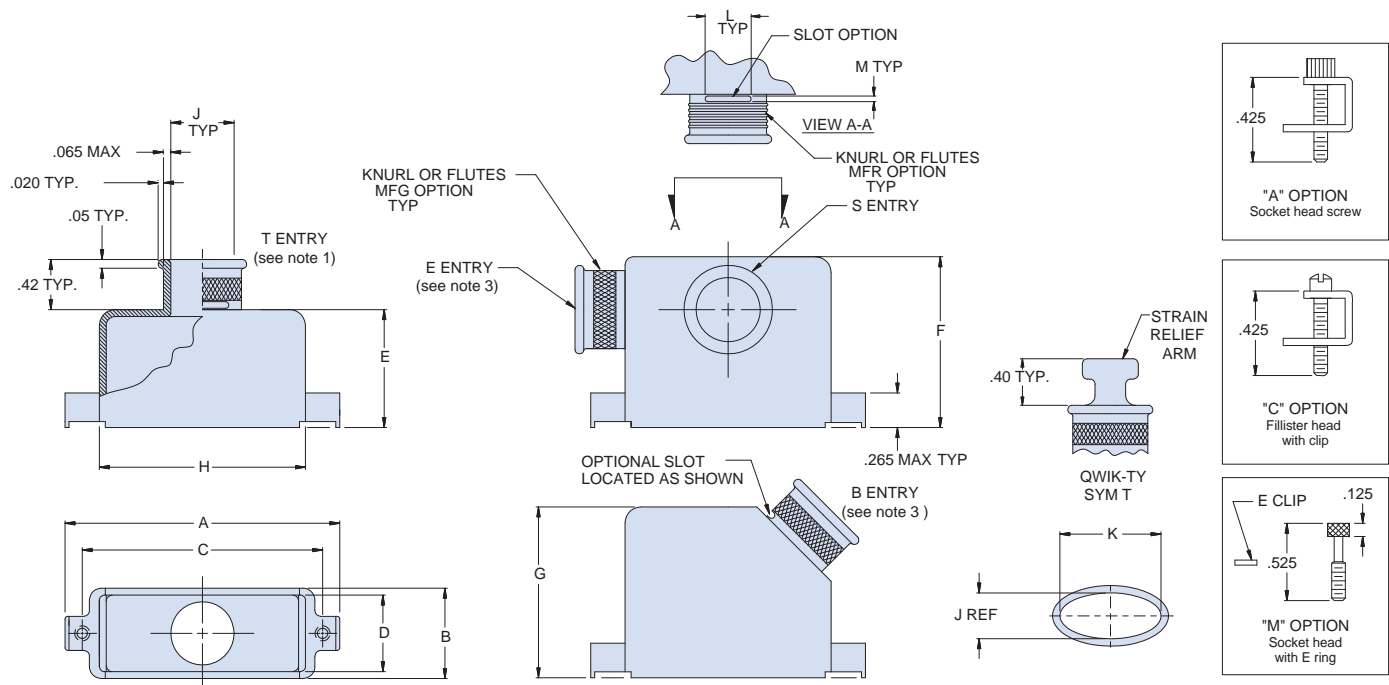
EMI/RFI Backshell with Banding Porch and Qwik-Ty Strain Relief, Multiple-Entry, Configurable



Solid shell, top, side, end, 45°, single / dual cable entry · 557-316



How To Order	
Sample Part Number	557T316 M 2 31 S T B H 6
Series	557T316 = Top entry (Table II and III) 557S316 = Side entry (Table IV) 557E316 = End entry (Table IV) 557B316 = 45° entry (Table II and III) For multiple entries, select two letters to indicate choice e.g. SE = Side and End entries
Finish Symbol	M = Electroless Nickel Z2 = Gold Plate
Shell Size	1, 2, 3, 4, 5, 6 (Table I)
Cable Entry	see Tables II, III, IV
Slot Option	S = Supplied with strain-relief slot Omit for no slot
Qwik-Ty Option	T = with Qwik-Ty strain relief arm Omit for none
Band Option	B = Band supplied (600-052) K = Coiled Band supplied (600-052-1) Omit for none
Jackscrew Option	A, C, M (see diagrams) H = Hole Omit for #4-40 Threaded hole
Optional Can Height	6 = 1.5" (38.1mm) 8 = 2.0" (50.8mm) 10 = 2.5" (63.5mm) Omit for standard height (see note 3)



EMI/RFI Backshell with Banding Porch and Qwik-Ty Strain Relief, Multiple-Entry, Configurable



Solid shell, top, side, end, 45°, single / dual cable entry · 557-316

Shell Size	A Max	B ±.020 (.51)	C ±.005 (.13)	D Ref	E Max	F Max	G Max**	H Ref
1*	1.25 (31.75)	.520 (13.21)	.984 (24.99)	.440 (11.18)	.695 (17.65)	1.413 (35.89)	1.035 (26.29)	.856 (21.74)
2	1.58 (40.13)	.520 (13.21)	1.312 (33.32)	.440 (11.18)	.695 (17.65)	1.413 (35.89)	1.035 (26.29)	1.186 (30.12)
3	2.13 (54.10)	.520 (13.21)	1.852 (47.04)	.440 (11.18)	.945 (24.00)	1.413 (35.89)	1.035 (26.29)	1.727 (43.87)
4	2.77 (70.36)	.520 (13.21)	2.500 (63.50)	.440 (11.18)	.945 (24.00)	1.595 (40.51)	1.035 (26.29)	2.383 (60.53)
5	2.68 (68.07)	.629 (15.98)	2.406 (61.11)	.549 (13.94)	1.135 (28.83)	1.595 (40.51)	1.125 (28.58)	2.287 (58.09)
6	2.77 (70.36)	.690 (17.53)	2.500 (63.50)	.610 (15.49)	1.265 (32.13)	1.595 (40.51)	1.185 (30.10)	2.405 (61.09)

*Max entry for Shell Size 1 is Dash No. 34 for Top entries and Dash No. 33 for 45° entries. **See Note 3

Dash No.	J Dia	K Dim	L Dim	M Dim
16	.188 (4.78)	N/A	.19 (4.83)	.08 (2.03)
18	.205 (5.21)	N/A	.20 (5.08)	.08 (2.03)
23	.250 (6.35)	N/A	.22 (5.59)	.08 (2.03)
30	.312 (7.92)	N/A	.25 (6.35)	.08 (2.03)
31	.375 (9.52)	N/A	.28 (7.11)	.08 (2.03)
32	.438 (11.13)	N/A	.31 (7.87)	.08 (2.03)
33	.562 (14.27)	.723 (18.36)	.38 (9.65)	.08 (2.03)
34	.650 (16.51)	.967 (24.56)	.44 (11.18)	.08 (2.03)
35	.562 (14.27)	1.250 (31.75)	.45 (11.43)	.08 (2.03)

Dash No.	J Dia	K Dim	L Dim	M Dim
16	.188 (4.78)	N/A	.19 (4.83)	.08 (2.03)
23	.250 (6.35)	N/A	.22 (5.59)	.08 (2.03)
30	.312 (7.92)	N/A	.25 (6.35)	.08 (2.03)
31	.375 (9.52)	N/A	.28 (7.11)	.08 (2.03)
32	.438 (11.13)	N/A	.31 (7.87)	.08 (2.03)
33	.562 (14.27)	N/A	.38 (9.65)	.08 (2.03)
34	.460 (11.68)	1.380 (35.05)	.44 (11.18)	.08 (2.03)
35	.460 (11.68)	1.500 (38.10)	.45 (11.43)	.08 (2.03)

Dash No.	J Dia	K Dim	L Dim	M Dim
16	.188 (4.78)	N/A	.19 (4.83)	.08 (2.03)
18	.205 (5.21)	N/A	.20 (5.08)	.08 (2.03)
23	.250 (6.35)	N/A	.22 (5.59)	.08 (2.03)
30	.312 (7.92)	N/A	.25 (6.35)	.08 (2.03)
31	.375 (9.52)	N/A	.28 (7.11)	.08 (2.03)
32	.438 (11.13)	N/A	.31 (7.87)	.08 (2.03)
33	.562 (14.27)	N/A	.38 (9.65)	.08 (2.03)
34	.650 (16.51)	N/A	.44 (11.18)	.08 (2.03)
36	.650 (16.51)	.967 (24.56)	.45 (11.43)	.08 (2.03)

NOTES

- For die cast backshell, entry may be elliptical. Consult factory for dimensions.
- Cable entry dash no. "00" indicates shorting can option, available on T (Top Entry) only. See Part No. 557T316 on page 43 for ordering information.
- For "B" configuration: Dash no. 33, standard can height to be 1.400 when mounting hardware is required.
Dash no. 34 and 35, standard can height to be 1.800
For "E" configuration: Dash 34 and 36 standard can height will be 2.050 when mounting hardware is required.
For "T" configuration: Shell Size 1 with Dash 34 entry only available without hardware. Consult factory for shorter lengths.

MATERIALS

Backshell: Aluminum alloy
Hardware: 300 Series Stainless Steel