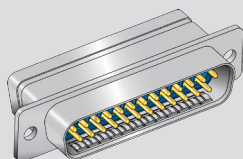


SERIES 28

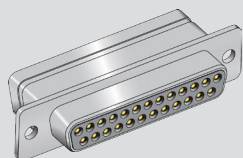
HiPer-D Space Grade Connectors

Product Selection Guide



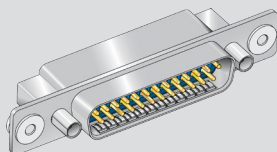
280-018 In-line or Panel Mount
Crimp Terminated, Pin Connector for Attaching Wires

Pages B-2



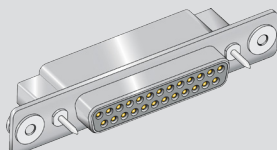
280-019 In-line or Panel Mount
Crimp Terminated, Socket Connector for Attaching Wires

Pages B-4



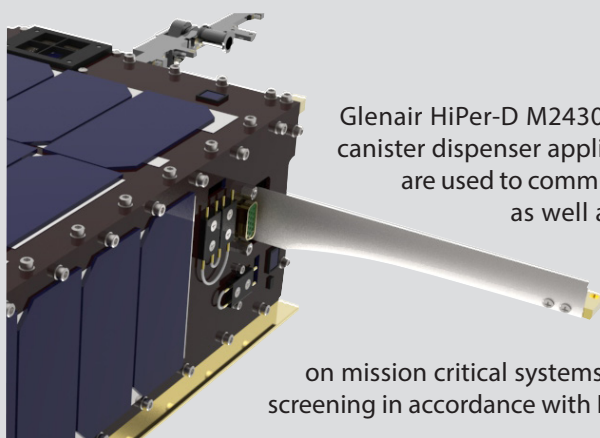
280-030 Float Mount
Crimp Terminated, Pin Connector for Attaching Wires

Page B-6



280-031 Float Mount
Crimp Terminated, Socket Connector for Attaching Wires

Page B-8



Glenair HiPer-D M24308 D-sub connectors are ideally suited for CubeSat or NanoSat canister dispenser applications where rack and panel or connectorized wire assemblies are used to communicate with HDRMs, pin pullers, pin pushers, door status sensors, as well as system communications and testing prior to deployment of satellite equipment. Standardized usage of M24308 connectors on hardware interfaces simplifies interconnection and communication. Glenair HiPer-D space grade M24308 D-sub connectors eliminate potential interconnect electrical problems on mission critical systems. Connectors are supplied with NASA/ESA/JAXA outgassing and screening in accordance with NASA EEE-INST-0002.

OTHER M24308 HIPER-D SOLUTIONS ALSO AVAILABLE - SEE OUR HIPER-D CATALOG

Sealed Panel Mount Technology



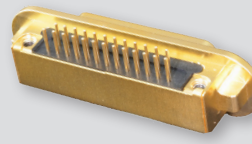
Combo HiPer-D Contact Arrangements



Ground Fingers for Improved EMC



Advanced Board Mount Features



Modern EMI backshells

