

MISSION-CRITICAL
INTERCONNECT
SOLUTIONS



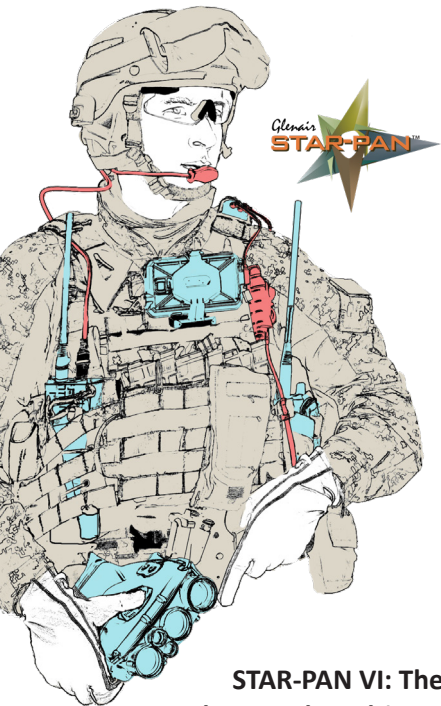
JTAC-TOUGH™

STAR-PAN™ VI

Powering Soldier Connectivity
and C4ISR Mission Success

QUICK-START USER'S GUIDE
with WASP (Windows Application for STAR-PAN)

FEBRUARY 2022



**STAR-PAN VI: The
Battle-Tested, Multiport
USB Hub, Cable, and Power
Management Solution**

STAR-PAN VI

Quick-Start User's Guide

Powering-up STAR-PAN VI
Main Battery Power

Powering-up STAR-PAN VI
Auxiliary Battery Power

Connecting STAR-PAN VI to the
EUD Host

Launching Windows Application
for STAR-PAN (WASP) Power
Management App

WASP Loading Screen

WASP Basic Operation

Home Screen Operations:

System Status

AUX Power Status

AC Power Supply Status

Enabling and Disabling Devices

Enabled-Device Power Consumption

Detailed Home Screen Operations:

Power Usage Stats

Setting Profiles

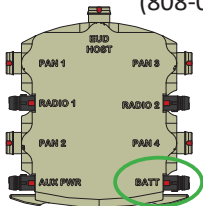
Changing Port Names

Reset Hub and App

Powering-up STAR-PAN VI: Main Battery Power



General-Purpose cable
(808-047)



STAR-PAN VI

Main Battery
with Adapter

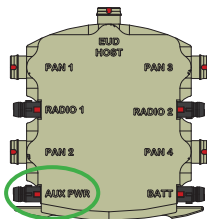


Connect one end of the General-Purpose cable to the battery adapter and the other end to the “BATT” port on the STAR-PAN VI hub (located on the bottom right-hand corner). Red indicators on cable and hub connectors will align.

Powering-up STAR-PAN VI: Auxiliary Battery Power



Auxiliary Power Cable (For Vehicle, AC, or 2nd Battery power. 808-064 shown.)



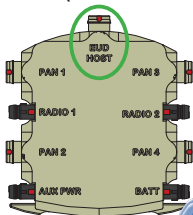
STAR-PAN VI

Connect one end of the appropriate cable (AC/DC power adapter cable, cigarette lighter power cable, or other) to the auxiliary power source and the other end to the “AUX PWR” port on the STAR-PAN VI hub (located on the bottom left-hand corner). Red indicators on cable and hub connectors will align.

Connecting STAR-PAN VI to the EUD Host



USB-C EUD Host cable
(contact factory for P/N)



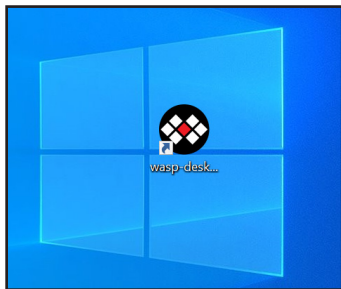
STAR-PAN VI



EUD/Host

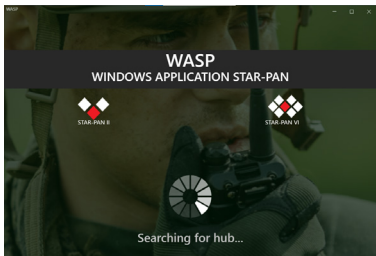
Plug the circular end of the USB-C cable into the “EUD HOST” port at the top of the STAR-PAN VI hub (Red indicators on cable and hub connectors will align). Plug the small rectangular end of the USB-C cable into the charging port of the phone.

Launching WASP (Windows Application for STAR-PAN)



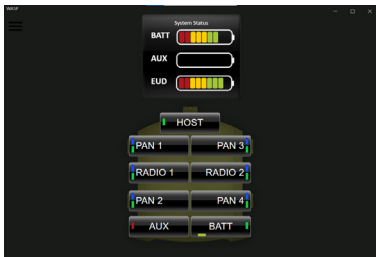
Once connected, the EUD Host will recognize the STAR-PAN VI connection. Double-click the WASP icon to launch the application.


WASP Loading Screen



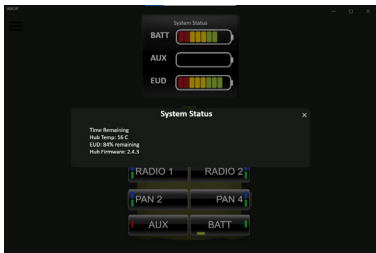
Always appears when first connecting to WASP, or if the host becomes disconnected from STAR-PAN VI while WASP is open

WASP Basic Operation



- Click/Tap to select any item
- Click/Tap  for Menu
- Swipe left from any screen for *Detailed Home Screen* view
- Swipe up or down on *Detailed Home Screen* to scroll through port-detail screens
- Swipe right to return to the previous screen

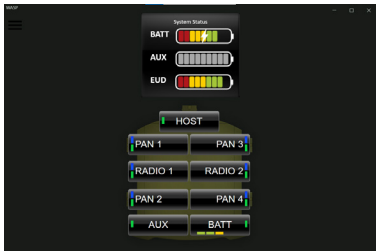
Home Screen: System Status



System status box will show graphical representation of EUD battery status and status of connected batteries on BATT/AUX port (for all SMBus-compatible batteries).

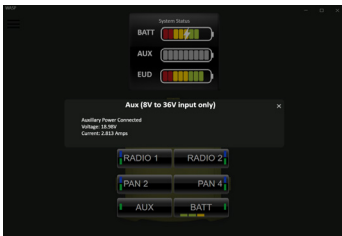
Click/tap on SYSTEM STATUS to open dialog box. This will display hub temperature, EUD batt status in percentage and hub firmware version

Home Screen: AUX Power Status



If an auxiliary power supply is connected to the STAR-PAN Hub, it is used by the system to charge the main battery, and individual port devices.

Home Screen: AC Power Supply Status



If the AUX power port is plugged to an AC power supply, the AUX power status bar will appear light gray. Click/tap on the AUX port to display input voltage and current.

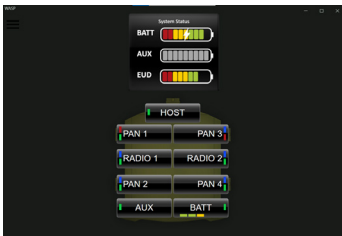
Home Screen: Enabling and Disabling Devices



Disable/Enable function allows user to save power by Disabling 5V (blue button) or battery power (green button) supply to peripherals without cutting data communication.

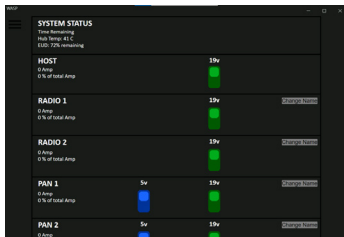
- Blue indicator means 5V is enabled
- Green indicator means battery power is enabled
- Red indicator means disabled

Home Screen: Enabled-Device Power Consumption



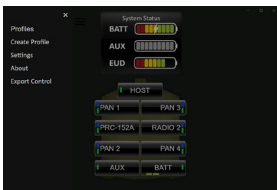
Enabled devices draw power. The amount is shown visually in a power load status bar directly under the port name.

Detailed Home Screen: Power Usage Stats

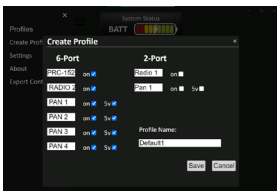


A second port-status “home screen” lists detailed battery power usage stats for all devices on the system. Note that you will only receive SMBus data if connected to a smart battery

Setting Profiles



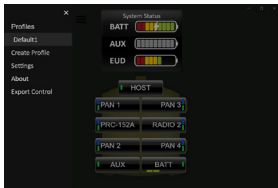
Click/Tap menu icon and select
CREATE PROFILE



In creating a profile you can set a name for each port. The 5V and/or battery power can also be enabled/disabled for each port. Radio ports only have battery power in.

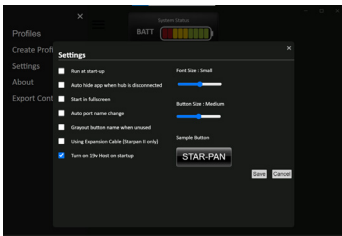
Set a a profile name and Click/
Tap SAVE

Setting Profiles (continued)



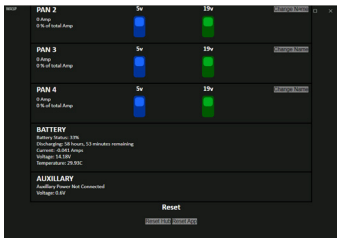
Click/tap PROFILES and select the appropriate created profile. All changes will be applied.

Detailed Home Screen: Changing Port Names



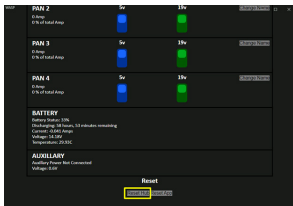
To change any port name, Click/Tap its name and select “Change Name.” In the pop-up screen, enter new name and Click/Tap “Yes.” The Port Name will now be updated on all screens.

Reset Hub and App



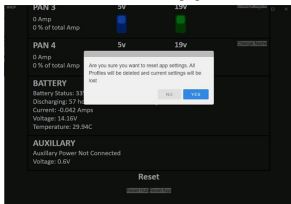
To reset the hub and app, swipe left from the hub screen view. Scroll to the bottom of the list screen view. This is where the 'Reset' options are.

Reset Hub



After tapping “Reset Hub” at the bottom of the screen, the user will see the blue and green voltage switches of all the ports reset.

Reset App



Upon tapping “Reset App Defaults” from the menu options screen, a pop-up alert confirming to clear all profiles, reset the hub, and return the system to factory defaults will appear. Select “Yes” to wipe all saved information and reset the hub.

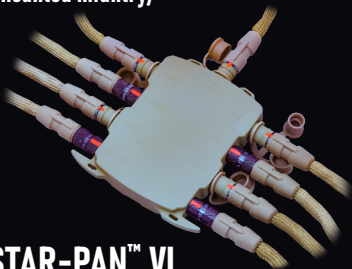


STAR-PAN

**SCALABLE
SOLDIER
NETWORKS**



STAR-PAN™ II
(Dismounted Infantry)



STAR-PAN™ VI
(JTAC / Mission Commander)



www.glenair.com/star-pan
818.247.6000
1211 Air Way, Glendale CA 91201

P/N 990-TS014