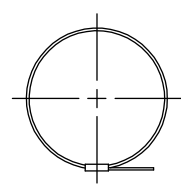
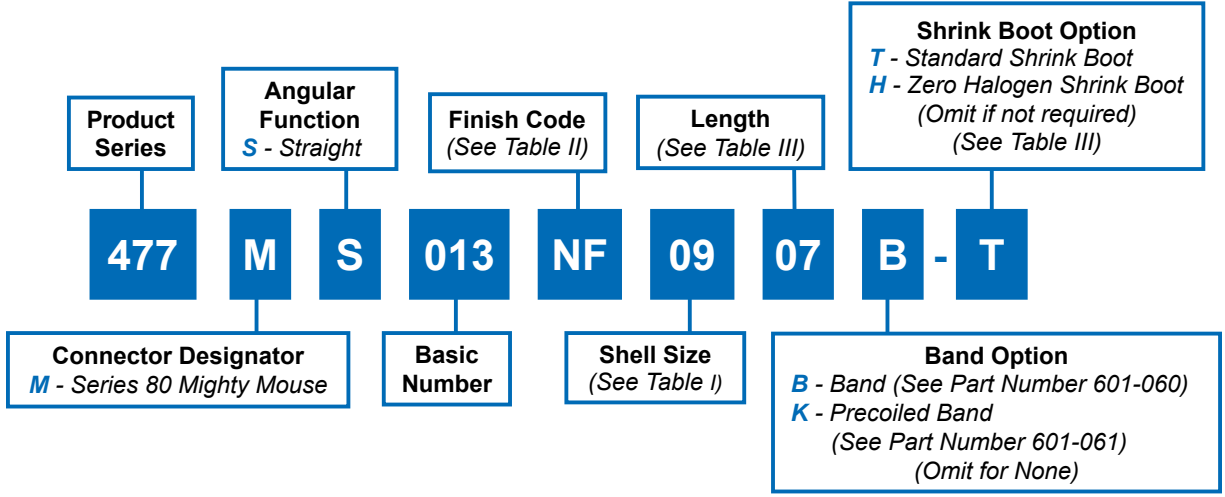


477-013
StarShield™ Extended Length EMI/RFI Shield
Termination Backshell
for 800 Series Mighty Mouse Connectors

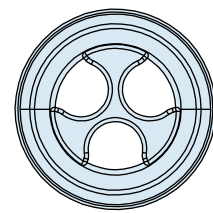
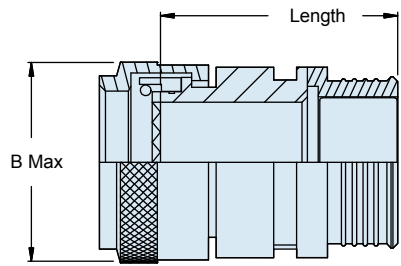
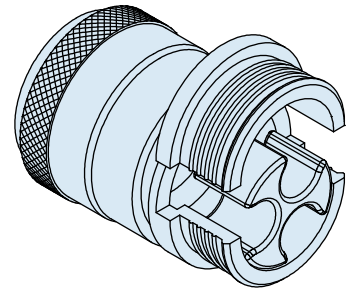


StarShield™ direct coupling, Mighty Mouse backshell with split banding porch

B



SYMBOL K
Band



Dimensions in inches (millimeters) and are subject to change without notice.

477-013
StarShield™ Extended Length EMI/RFI Shield
Termination Backshell
for 800 Series Mighty Mouse Connectors



Table I: Dimensions					
Order No	Shell Size Ref		A Thread Class -2B	B Max	Ferrule
	800/801 803/804	805			
05	05	N/A	1/4-32 UNEF	.470 (11.9)	01
06	06	N/A	5/16-32 UNEF	.530 (13.5)	01
11	N/A	08	3/8-32 UNEF	.570 (14.5)	01
07	07	09	7/16-28 UNEF	.637 (16.2)	01
08	08	10	1/2-28 UNEF	.700 (17.8)	01
09	09	11	9/16-24 UNEF	.758 (19.3)	02
10	10	12	5/8-24 UNEF	.819 (20.8)	03
12	11/12/13	13	11/16-24 UNEF	.896 (22.8)	03
13	N/A	15	3/4-20 UNEF	.930 (23.6)	05
14	14/15/16/17	18/19	15/16-20 UNEF	1.137 (28.9)	06
17	21	23	1 3/16-18 UNEF	1.387 (35.2)	09

Table II: Material and Finish Options	
Code	Material; Finish Description
M	Aluminum; electroless nickel
MT	Aluminum; nickel - PTFE
NF	Aluminum; CAD/O. D. over electroless nickel
ZN	Aluminum; zinc nickel/O. D. over electroless nickel
ZR	Aluminum; zinc nickel/black over electroless nickel (RoHS)
Z1	Stainless steel passivate
ZM	Stainless steel/electroless nickel

Table III: Shrink Boot	
Length Code	Length
07	0.88
08	1.00
09	1.13
10	1.25
11	1.38
12	1.50
13	1.63
14	1.75
15	1.88
16	2.00

- Notes**
1. Assembly identified with manufacturer's name and P/N, space permitting.
 2. For effective grounding, connector with conductive finish should be used.
 3. Glenair 600 series backshell assembly tools are recommended for assembly and installation.
 4. Ferrule kit sold separately.
 687-764 ferrule and HST device kit
 687-809 ferrule and sealing device kit
 687-748 solder ferrule
 687-841-01 HST flex device

Material/Finish	
Backshell, clamp, coupling nut and star	Aluminum alloy/Table II
O-rings	Silicone/n.a.
Band	Stainless steel/passivate

Dimensions in inches (millimeters) and are subject to change without notice.