

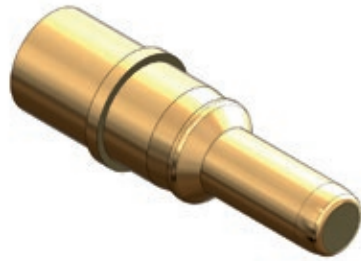


ADVANCED PERFORMANCE

Super ITS-921 Reverse-Bayonet Rigid Insert, High-Ampacity Connectors



Pin Crimp Contacts



Super ITS - 921 Pin Crimp Contacts

Series 921 Super ITS™ contacts for size #16 through Size #2/0 wire. Copper alloy with silver or gold plating. Terminate to wire with standard crimp tools. Contacts are snap-in, rear-release. Use in Series 921 Super ITS™ connectors.

Pin contact with silver plating. For plating thickness, please consult *materials and finishes table* on the How-to-Order pages. Highly conductive silver plating is ideal for high current applications.

Pin contact with gold plating for improved protection from corrosive environments. For plating thickness, please consult *materials and finishes table* on the How-to-Order pages.

Pin Crimp Contacts Table			
Contact Size	Wire Size	Finish	Pin Contact Part Number
16	16, 20	Silver	921-16-PCG10
		Gold	921-16-PCG117
12	12, 14	Silver	921-12-PCG10
		Gold	921-12-PCG117
8	8	Silver	921-8-PCG10
	10		921-8-10-PCG10
4	4	Silver	921-4-PCG10
	6		921-4-6-PCG10
1/0	1/0	Silver	921-0-PCG10
	2/0	Silver	921-0-2-PCG10

Pin Contact Current Ratings and Resistance				
Contact Size	Wire Size	Current Rating at 20° C (Amperes)	Current Rating at 80° C (Amperes)	Max. Contact Resistance (milliohms)
16	16	25	15	6.0
	20	10	9	
12	12	50	28	3.0
	14	40	20	
8	8	90	70	1.0
	10	70	55	
4	4	160	130	0.5
	6	120	105	
1/0	1/0	300	250	0.3
	2/0	330	280	

SUPER ITS: HARSH ENVIRONMENT





ADVANCED PERFORMANCE
**Super ITS-921 Reverse-Bayonet
 Rigid Insert, High-Ampacity Connectors**
 LouverBand Socket Crimp Contacts



Super ITS - 921 LouverBand Socket Crimp Contacts

Series 921 Super ITS™ contacts for size #16 through Size #2/0 wire. Copper alloy with silver or gold plating. Terminate to wire with standard crimp tools. Contacts are snap-in, rear-release. Use in Series 921 Super ITS™ connectors.

Socket contact with silver plating. For plating thickness, please consult **materials and finishes table** on the How-to-Order pages. Highly conductive silver plating is ideal for high current applications.

Socket contact with gold plating for improved protection from corrosive environments. For plating thickness, please consult **materials and finishes table** on the How-to-Order pages.

Socket Crimp Contacts Table				
Contact Size	Wire Size	Finish	Socket Contact Part Number	Contact Type
16	16, 20	Silver	921-16-SC-G10	Spring Clip
		Gold	921-16-SC-G117	
12	12, 14	Silver	921-12-SC-G10	Spring Clip
		Gold	921-12-SC-G117	
8	8	Silver	921-8-SC-LBG10	Louver Band
	10		921-8-10-SC-LBG10	
4	4	Silver	921-4-SC-LBG10	Louver Band
	6		921-4-6-SC-LBG10	
1/0	1/0	Silver	921-0-SC-LBG10	Louver Band
	2/0	Silver	921-0-2-SC-LBG10	Louver Band

socket Contact Current Ratings and Resistance				
Contact Size	Wire Size	Current Rating at 20° C (Amperes)	Current Rating at 80° C (Amperes)	Max. Contact Resistance (milliohms)
16	16	25	15	6.0
	20	10	9	
12	12	50	28	3.0
	14	40	20	
8	8	90	70	1.0
	10	70	55	
4	4	160	130	0.5
	6	120	105	
1/0	1/0	300	250	0.3
	2/0	330	280	0.3

SUPER ITS: HARSH ENVIRONMENT

A