



ADVANCED PERFORMANCE Super ITS-921 Reverse-Bayonet Rigid Insert, High-Ampacity Connectors



How to Order



Super ITS - 921 Plug and Receptacle Connectors for High Current Applications

Super ITS™ - 921 extreme environment receptacle connectors are intended for high current applications where size 8 AWG to size 2/0 AWG wires are used. Receptacle connectors feature high ampacity LouverBand contacts. Quick-mating bayonet coupling type. EMI protected with ground spring and integral backshell mating interface teeth. Standard contacts are silver plated high conductivity copper alloy. or choose gold-plated signal (Size 16 and 12) contacts for improved corrosion protection in space or petrochemical environments. Silicone O-rings and wire seal provide watertight sealing. Contacts are packaged with connector.

Specifications			
Current Rating			
Contact Size	Wire Size	Rated current at +20°C (Amperes)	Rated current at +80°C (Amperes)
16	16	25	15
	20	10	9
12	12	50	28
	14	40	20
8	8	90	70
	10	70	55
4	4	160	130
	6	120	105
1/0	1/0	300	250
2/0	2/0	330	280

Contact Resistance	
Contact Size	Resistance (mΩ Max.)
16	6
12	3
8	1
4	0.5
1/0	0.2

How To Order						
Sample Part Number:	921	-002	-32-17	S1	MT	N
Series	921 = Super ITS					
Shell Style	See shell style table					
Shell Size - Insert Arrangement	See insert arrangement; Page A-76					
Contact Type and Plating	P1 = pin contacts, silver plated S1 = socket contacts, silver plated P2 = pin contacts, gold plated S2 = socket contacts, gold plated P0 = pin connector, without contacts S0 = socket connector, without contacts					
Material and Finish	F6 = aluminum, black electrostatic paint G3 = aluminum, cadmium, olive drab MT = aluminum, nickel-PTFE M = aluminum, electroless nickel G2 = aluminum, anodize, hardcoat Z1 = stainless steel, passivate AB = marine bronze, unplated					
Polarization	N = position 1 2 = position 2 3 = position 3 4 = position 4					

Shell Style	
Series	Description
002	Front or wall mount receptacle with through holes
003	Rear panel mount, wall mount receptacle with clinch nuts
006	Plug with arctic coupling nut
005	Plug with RadGrip rubber coated coupling nut
007	Rear panel mount, jam-nut mount receptacle
001	Inline receptacle

SUPER ITS: HARSH ENVIRONMENT

A



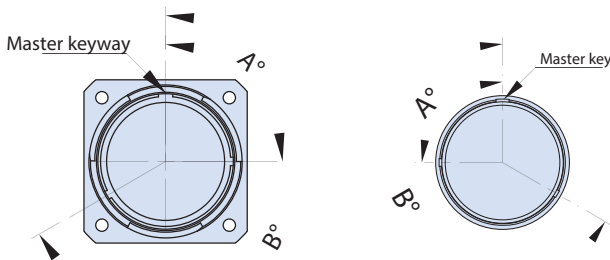
ADVANCED PERFORMANCE Super ITS-921 Reverse-Bayonet Rigid Insert, High-Ampacity Connectors



How to Order

Shell Material and Finish Supplemental Information							
Code	Material	Finish	Electrical conductivity	Hrs. Salt spary	Operating T range	RoHS Compliant	Ground Spring
F6	Aluminum	Black Electrostatic Paint	Non Conductive	500	-55°C to +125°C	Yes	No
G3	Aluminum	Cadmium. Olive drab	Conductive	500	-55°C to +125°C	No	Yes
MT	Aluminum	Nickel-PTFE	Conductive	1000	-65°C to +175°C	Yes	Yes
M	Aluminum	Electroless Nickel	Conductive	48	-65°C to +200°C	Yes	Yes
G2	Aluminum	Anodize. Hardcoat	Non Conductive	336	-65°C to +200°C	Yes	No
Z1	Stainless Steel	Passivate	Conductive	1000	-65°C to +200°C	Yes	Yes
AB	Marine Bronze	Unplated	Conductive	1000	-65°C to +200°C	Yes	Yes

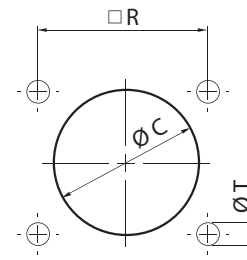
POLARIZATION



Receptacle Polarization		
Position	A°	B°
1	90	240
2	135	225
3	150	210
4	120	270

Plug Polarization		
Position	A°	B°
1	90	240
2	135	225
3	150	210
4	120	270

PANEL CUTOUT DIMENSIONS



Shell Size	Panel Cutout					
	Front Panel Mounting			Rear Panel Mounting		
	øC	R	øT	øC	R	øT
24	36.0 (1.42)	34.9 (1.37)	3.9 (0.15)	41.8 (1.65)	34.9 (1.37)	4.5 (0.18)
28	42.0 (1.65)	39.7 (1.56)	3.9 (0.15)	47.6 (1.87)	39.7 (1.56)	5.5 (0.22)
32	48.5 (1.91)	44.5 (1.75)	4.5 (0.18)	54.3 (2.14)	44.5 (1.75)	5.5 (0.22)
40	61.0 (2.40)	55.5 (2.19)	4.5 (0.18)	66.4 (2.61)	55.5 (2.19)	5.5 (0.22)

SUPER ITS: HARSH ENVIRONMENT

A



ADVANCED PERFORMANCE Super ITS-921 Reverse-Bayonet Rigid Insert, High-Ampacity Connectors



How to Order

921-002: FRONT OR REAR PANEL MOUNT, WALL MOUNT RECEPTACLE WITH THROUGH HOLES



921-002 Front or rear panel mount, wall mount receptacles provide EMI protection through the use of a ground spring. Accessory threads for backshells with integral teeth for high vibration environments. Optional gold-plated signal (Size 16 and 12) contacts available for improved corrosion protection in space or petrochemical environments. Silicone O-rings and wire seal provide watertight sealing. Contacts are packaged with connector.

Sample Part Number

921	-002	-40-A4	S1	MT	N
Series	Shell Style	Shell Size/ Insert Arrangement	Contact Type and Plating	Material and Finish	Polarization

921-003: REAR PANEL MOUNT, WALL MOUNT RECEPTACLE WITH CLINCH NUTS



921-003 Rear panel mount, wall mount receptacles feature EMI protection through the use of a ground spring. Accessory threads for backshells with integral teeth for high vibration environments. Clinch nuts eliminate the need for tapping mounting holes or nut. Optional gold-plated signal (Size 16 and 12) contacts available for improved corrosion protection in space or petrochemical environments. Silicone O-rings and wire seal provide watertight sealing. Contacts are included.

Sample Part Number

921	-003	-40-A4	S1	MT	N
Series	Shell Style	Shell Size/ Insert Arrangement	Contact Type and Plating	Material and Finish	Polarization

921-006: PLUG CONNECTOR WITH ARCTIC COUPLING NUT WITH DEEP GROOVES FOR EASE OF COUPLING WITH GLOVED HANDS



921-006 plug connectors feature high ampacity pin contacts and rugged water resistant construction for the most demanding environments. EMI protected with ground spring. Accessory threads for backshells with integral teeth for high vibration environments. Optional gold-plated signal (Size 16 and 12) contacts available for improved corrosion protection in space or petrochemical environments. Silicone O-rings and wire seal provide watertight sealing. Contacts are included

Sample Part Number

921	-006	-40-A4	S1	MT	N
Series	Shell Style	Shell Size/ Insert Arrangement	Contact Type and Plating	Material and Finish	Polarization

Part Number Options
Shell Size / Insert Arrangement
See contact arrangements; page B-1
Contact Type
P1 = pin contacts, silver plated S1 = socket contacts, silver plated P2 = pin contacts, gold plated S2 = socket contacts, gold plated P0 = pin connector, without contacts S0 = socket connector, without contacts
Material / Finish
F6 = aluminum, black electrostatic paint G3 = aluminum, cadmium, olive drab MT = aluminum, nickel-PTFE M = aluminum, electroless nickel G2 = aluminum, anodize, hardcoat Z1 = stainless steel, passivate AB = marine bronze, unplated
Polarization
N = Position 1 2 = Position 2 3 = Position 3 4 = Position 4

SUPER ITS: HARSH ENVIRONMENT

A



ADVANCED PERFORMANCE Super ITS-921 Reverse-Bayonet Rigid Insert, High-Ampacity Connectors



How to Order

921-005: PLUG WITH RADGRIP RUBBER COATED COUPLING NUT



921-005 plug connectors have a rubber coated quick mating reverse bayonet coupling for easy coupling and decoupling of connector in environments where gloves are readily required. EMI protected with ground spring. Accessory threads for backshells with integral teeth for high vibration environments. Optional gold-plated signal (Size 16 and 12) contacts available for improved corrosion protection in space or petrochemical environments. Silicone O-rings and wire seal provide watertight sealing. Contacts are packaged with connector.

Sample Part Number					
921	-005	-40-A4	S1	MT	N
Series	Shell Style	Shell Size/ Insert Arrangement	Contact Type and Plating	Material and Finish	Polarization

921-007: REAR PANEL MOUNT. JAM-NUT RECEPTACLE



921-007 Rear panel mount, jam-nut connectors accommodate panel thicknesses up to 300 mm (7.62 inches). These connectors feature high ampacity LouverBand contacts and quick mating bayonet coupling, EMI protected with ground spring. Accessory threads for backshells with integral teeth for high vibration environments. Optional gold-plated signal (Size 16 and 12) contacts available for improved corrosion protection in space or petrochemical environments. Silicone O-rings and wire seal provide watertight sealing. Contacts are packaged with connector.

Sample Part Number					
921	-007	-40-A4	S1	MT	N
Series	Shell Style	Shell Size/ Insert Arrangement	Contact Type and Plating	Material and Finish	Polarization

921-001 IN -LINE RECEPTACLE



921-001 These connectors, often called "in-line" or "free-hanging" receptacles, are installed on cables for cord-to-cord applications. These connectors feature high ampacity LouverBand contacts and a quick mating bayonet coupling, EMI protected with ground spring. Accessory threads for backshells with integral teeth for high vibration environments. Optional gold-plated signal (Size 16 and 12) contacts available for improved corrosion protection in space or petrochemical environments. Silicone O-rings and wire seal for watertight sealing. Contacts are packaged with connector.

Sample Part Number					
921	-001	-40-A4	S1	MT	N
Series	Shell Style	Shell Size/ Insert Arrangement	Contact Type and Plating	Material and Finish	Polarization

Part Number Options
Shell Size / Insert Arrangement
See contact arrangements; page B-1
Contact Type
P1 = pin contacts, silver plated S1 = socket contacts, silver plated P2 = pin contacts, gold plated S2 = socket contacts, gold plated P0 = pin connector, without contacts S0 = socket connector, without contacts
Material / Finish
F6 = aluminum, black electrostatic paint G3 = aluminum, cadmium. olive drab MT = aluminum, nickel-PTFE M = aluminum, electroless nickel G2 = aluminum, anodize, hardcoat Z1 = stainless steel, passivate AB = marine bronze, unplated
Polarization
N = Position 1 2 = Position 2 3 = Position 3 4 = Position 4

SUPER ITS: HARSH ENVIRONMENT

A