

SERIES 183-001
SuperNine MT Fiber Optic Connectors
189-133 Conduit adapter



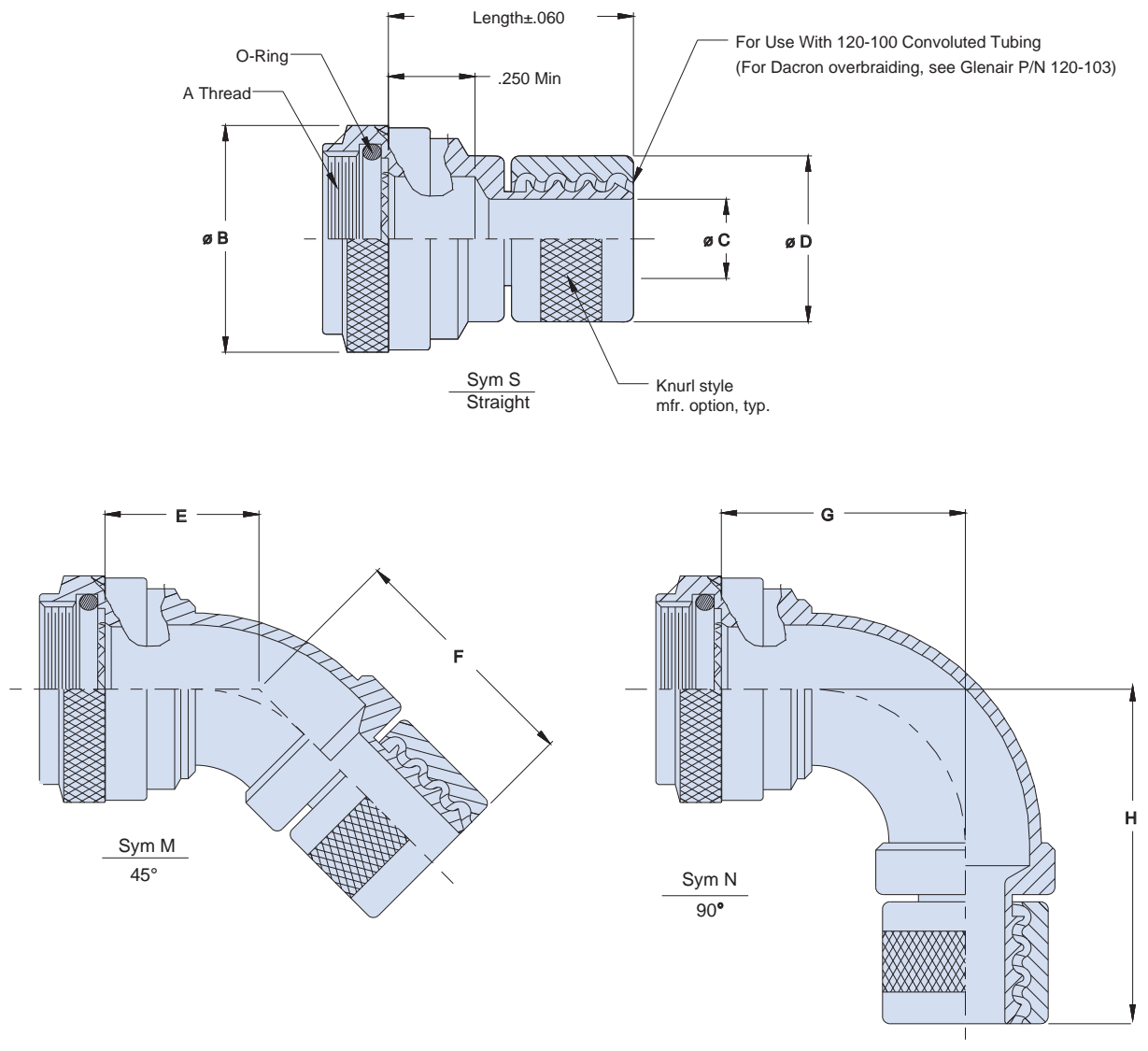
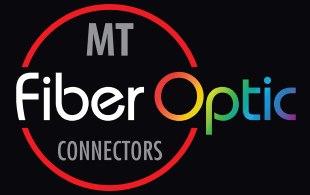
How To Order										
Sample Part Number	189	H	S	133	ME	11	06	K	D	-3
Basic Part Number	Conduit adapter									
Connector Designator	H = MIL-DTL-38999, Ser. III & IV									
Angular Function	S = Straight M = 45° N = 90°									
Basic Number	133									
Material/Finish Code	See Table II									
Shell Size	See Table I									
Tubing Size	See Table III									
Conduit material designator	K = PEEK Omit for OFA, ETFE, OR FEP									
Overbraid	D = Black dacron Omit for none									
Length	in 1/2 inch increments. Example: 3 = 1.5 inches (Applicable for Straight backshell only. Standard min. length = 1.5 in., contact factory for shorter lengths.)									

Table I								
Shell Size	A Thread Isometric	B Max DIA	C Max DIA	D Max DIA	F Max DIA	G Max DIA	H Max DIA	Max Entry Max Tubing Size
11	M15 x 1 - 6H	.820	.940	.645	1.020	.935	1.310	12
13	M18 x 1 - 6H	.940	1.060	.695	1.070	1.055	1.430	16
15	M22 x 1 - 6H	1.070	1.190	.745	1.120	1.185	1.560	20
17	M25 x 1 - 6H	1.210	1.380	.800	1.175	1.315	1.690	24

Table II		
Sym	Material	Finish Description
ME	Aluminum Alloy	Electroless Nickel
MT		Nickel- Pife, Gray
NF		Cad/O. O. Over Electroless Nickel
ZN		Zinc Nickel/O. O. Over Electroless Nickel
ZNU		Zinc Nickel/Black Over Electroless Nickel
Z1	Stainless Steel	Passivate
ZL		Electrodeposited Nickel

Table III		
Dash Number	Conduit I. D. Min	C DIA Ref
06	.181	.188
09	.273	.281
10	.300	.312
12	.359	.397
14	.427	.438
16	.480	.511
20	.603	.636
24	.725	.761

SERIES 183-001
SuperNine MT Fiber Optic Connectors
189-133 Conduit adapter



NOTES

- Glenair 600 series backshell assembly tools are recommended for assembly and installation.
- Material/Finish:
- Adapter, coupling nut, and compression nut: See Table II
 - O-rings: Fluorosilicone