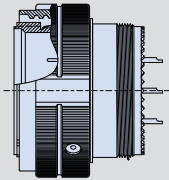


SuperNine® EMI/RFI filter

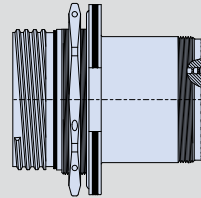
MIL-DTL-38999 Series III Type connectors

Product Selection Guide



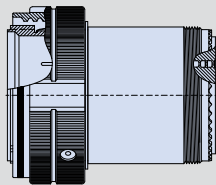
240-383P
EMI/RFI Filter Plug

F-8



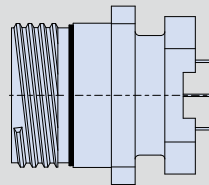
240-383S
EMI/RFI Filter Jam Nut Receptacle with Crimp Removable Contacts

F-18



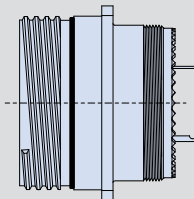
240-383Q
EMI/RFI Filter Plug with Crimp Removable Contacts

F-10



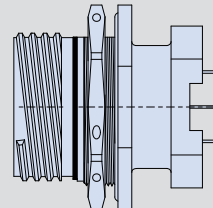
240-383D
EMI/RFI Filter Dual Flange Wall Mount Receptacle with PC Tails and threaded standoff

F-20



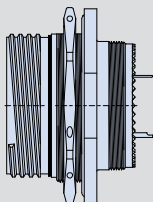
240-383W
EMI/RFI Filter Wall Mount Receptacle with solder cup or PC tail termination

F-12



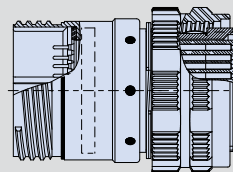
240-383E
EMI/RFI Filter Dual Flange Jam Nut Receptacle with PC Tails and threaded standoff

F-22



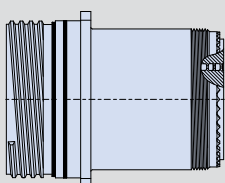
240-383J
EMI/RFI Filter Jam Nut Receptacle with solder cup or PC tail termination

F-14



240-383B
EMI/RFI Filter Adapter

F-24



240-383R
EMI/RFI Filter Wall Mount Receptacle with Crimp Removable Contacts

F-16