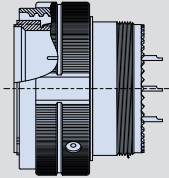
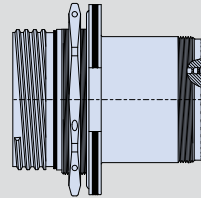


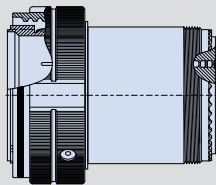
Product selection guide
MIL-DTL-38999 Series III Type



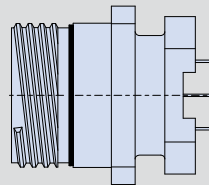
240-383P F-8
EMI/RFI Filter Plug



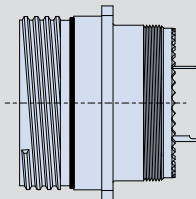
240-383S F-18
EMI/RFI Filter Jam Nut Receptacle with Crimp Removable Contacts



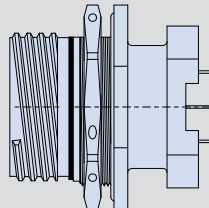
240-383Q F-10
EMI/RFI Filter Plug with Crimp Removable Contacts



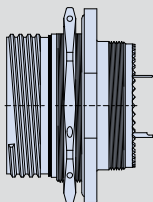
240-383D F-20
EMI/RFI Filter Dual Flange Wall Mount Receptacle with PC Tails and threaded standoff



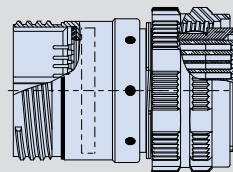
240-383W F-12
EMI/RFI Filter Wall Mount Receptacle with solder cup or PC tail termination



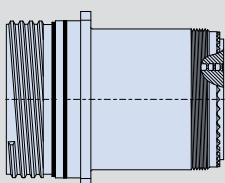
240-383E F-22
EMI/RFI Filter Dual Flange Jam Nut Receptacle with PC Tails and threaded standoff



240-383J F-14
EMI/RFI Filter Jam Nut Receptacle with solder cup or PC tail termination



240-383B F-24
EMI/RFI Filter Adapter



240-383R F-16
EMI/RFI Filter Wall Mount Receptacle with Crimp Removable Contacts

