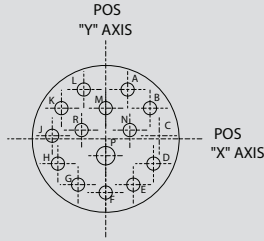


SuperNine® Combo PCB footprints



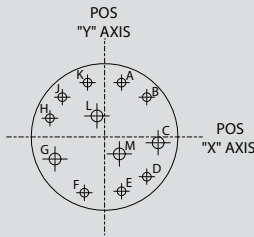
Based on MIL-STD-1560, mating face of pin insert shown (socket insert will be opposite)

15-15
1x #16
14X #20



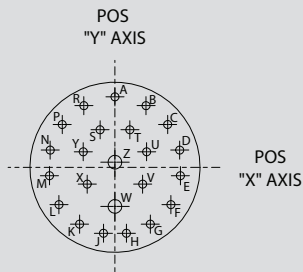
I.D. NO.	LOCATION	
	X	Y
A	0.100	0.225
B	0.202	0.140
C	0.244	0.014
D	0.218	-0.113
E	0.126	-0.209
F	0.000	-0.245
G	-0.126	-0.209
H	-0.218	-0.113
J	-0.244	0.014
K	-0.202	0.140
L	-0.100	0.225
M	0.000	0.140
N	0.110	0.040
P	0.000	-0.077
R	-0.110	0.040

15-97
4X #16
8X #20



I.D. NO.	LOCATION	
	X	Y
A	0.065	0.234
B	0.178	0.178
C	0.230	-0.023
D	0.178	-0.178
E	0.065	-0.234
F	-0.089	-0.235
G	-0.207	-0.095
H	-0.234	0.065
J	-0.178	0.178
K	-0.065	0.234
L	-0.047	0.081
M	0.047	-0.081

17-99
2X #16
37X #20



I.D. NO.	LOCATION		I.D. NO.	LOCATION	
	X	Y		X	Y
A	0.000	0.321	N	-0.305	0.099
B	0.131	0.293	P	-0.239	0.214
C	0.239	0.214	R	-0.131	0.293
D	0.305	0.099	S	-0.070	0.177
E	0.319	-0.034	T	0.070	0.177
F	0.278	-0.161	U	0.175	0.094
G	0.189	-0.260	V	0.150	-0.075
H	0.067	-0.314	W	0.000	-0.161
J	-0.067	-0.314	X	-0.150	-0.075
K	-0.189	-0.260	Y	-0.175	0.094
L	-0.278	-0.161	Z	0.000	0.025
M	-0.319	-0.034			

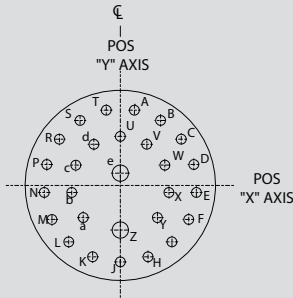


SuperNine® Combo PCB footprints



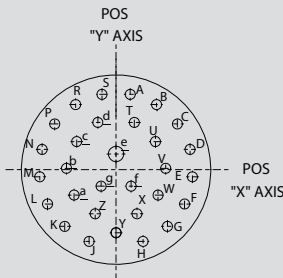
Based on MIL-STD-1560, mating face of pin insert shown (socket insert will be opposite)

19-28
2X #16
26X #20



I.D. NO.	LOCATION		I.D. NO.	LOCATION	
	X	Y		X	Y
A	0.066	0.353	R	-0.286	0.217
B	0.189	0.305	S	-0.189	0.305
C	0.286	0.217	T	-0.066	0.353
D	0.345	0.098	U	0	0.230
E	0.357	-0.033	V	0.124	0.193
F	0.321	-0.160	W	0.209	0.095
G	0.242	-0.265	X	0.228	-0.033
H	0.130	-0.335	Y	0.174	-0.151
J	0	-0.359	Z	0	-0.191
K	-0.130	-0.335	a	-0.174	-0.151
L	-0.242	-0.265	b	-0.228	-0.033
M	-0.321	-0.160	c	-0.209	0.095
N	-0.357	-0.033	d	-0.124	0.193
P	-0.345	0.098	e	0	0.062

19-30
1X #16
29X #20



I.D. NO.	LOCATION		I.D. NO.	LOCATION	
	X	Y		X	Y
A	0.065	0.346	S	-0.065	0.346
B	0.186	0.299	T	0.084	0.217
C	0.282	0.210	U	0.181	0.129
D	0.340	0.093	V	0.228	0.008
E	0.351	-0.033	W	0.193	-0.117
F	0.315	-0.158	X	0.096	-0.203
G	0.236	-0.261	Y	0.000	-0.290
H	0.124	-0.330	Z	-0.096	-0.203
J	-0.124	-0.330	a	-0.193	-0.117
K	-0.236	-0.261	b	-0.228	0.008
L	-0.315	-0.158	c	-0.181	0.129
M	-0.351	-0.033	d	-0.084	0.217
N	-0.340	0.093	e	0.000	0.072
P	-0.282	0.210	f	0.069	-0.076
R	-0.186	0.299	g	-0.069	-0.076

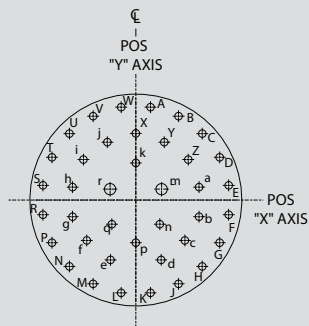
SuperNine® Combo PCB footprints



Based on MIL-STD-1560, mating face of pin insert shown (socket insert will be opposite)

21-39

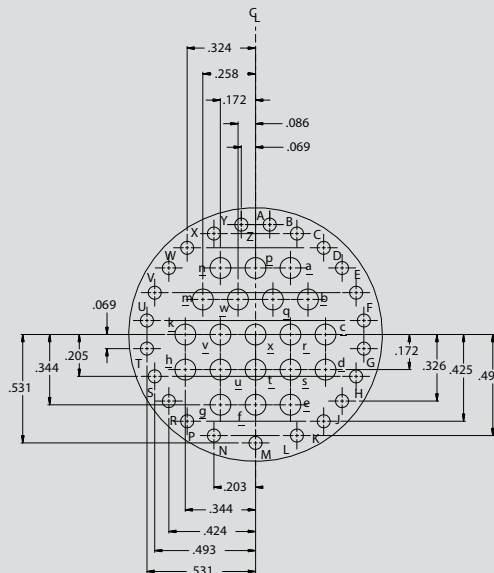
2X #16
37X #20



I.D. NO.	LOCATION		I.D. NO.	LOCATION	
	X	Y		X	Y
A	0.065	0.411	a	0.280	0.057
B	0.189	0.371	b	0.280	-0.074
C	0.294	0.294	c	0.217	-0.189
D	0.371	0.189	d	0.112	-0.265
E	0.411	0.065	e	-0.112	-0.265
F	0.411	-0.065	f	-0.217	-0.189
G	0.371	-0.189	g	-0.280	-0.074
H	0.294	-0.294	h	-0.280	0.057
J	0.189	-0.371	i	-0.232	0.179
K	0.065	-0.411	j	-0.126	0.256
L	-0.065	-0.411	k	0	0.164
M	-0.189	-0.371	m	0.114	0.048
N	-0.294	-0.294	n	0.106	-0.107
P	-0.371	-0.189	p	0	-0.189
R	-0.411	-0.065	q	-0.106	-0.107
S	-0.411	0.065	r	-0.114	0.048
T	-0.371	0.189			
U	-0.294	0.294			
V	-0.189	0.371			
W	-0.065	0.411			
X	0	0.295			
Y	0.126	0.256			
Z	0.232	0.179			

25-43

20X #16
23X #20

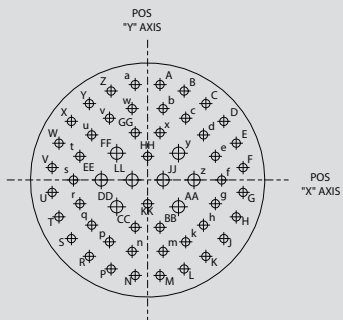


SuperNine® Combo PCB footprints



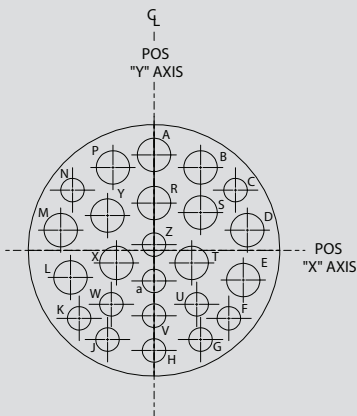
Based on MIL-STD-1560, mating face of pin insert shown (socket insert will be opposite)

25-4
8X #16
48X #20



I.D. No.	Location		I.D. No.	Location	
	X	Y		X	Y
A	0.069	0.531	f	0.412	0.000
B	0.203	0.495	g	0.377	-0.132
C	0.324	0.425	h	0.311	-0.251
D	0.424	0.326	k	0.212	-0.344
E	0.493	0.205	m	0.086	-0.397
F	0.531	0.069	n	-0.086	-0.397
G	0.531	-0.069	p	-0.212	-0.344
H	0.493	-0.205	q	-0.311	-0.251
J	0.424	-0.326	r	-0.377	-0.132
K	0.324	-0.425	s	-0.412	0.000
L	0.203	-0.495	t	-0.377	0.132
M	0.069	-0.531	u	-0.311	0.251
N	-0.069	-0.531	v	-0.212	0.344
P	-0.203	-0.495	w	-0.086	0.397
R	-0.324	-0.425	x	0.069	0.263
S	-0.424	-0.326	y	0.172	0.149
T	-0.493	-0.205	z	0.258	0.000
U	-0.531	-0.069	AA	0.172	-0.149
V	-0.531	0.069	BB	0.069	-0.263
W	-0.493	0.205	CC	-0.069	-0.263
X	-0.424	0.326	DD	-0.172	-0.149
Y	-0.324	0.425	EE	-0.258	0.000
Z	-0.203	0.495	FF	-0.172	0.149
a	-0.069	0.531	GG	-0.069	0.263
b	0.086	0.397	HH	0.000	0.132
c	0.212	0.344	JJ	0.086	0.000
d	0.311	0.251	KK	0.000	-0.132
e	0.377	0.132	LL	-0.086	0.000

25-24
12X #16
12X #12



I.D. NO	LOCATION		I.D. NO	LOCATION	
	X	Y		X	Y
A	0.000	0.472	N	-0.403	0.298
B	0.230	0.410	P	-0.230	0.410
C	0.403	0.298	R	0.000	0.234
D	0.461	0.100	S	0.230	0.172
E	0.413	-0.134	T	0.186	-0.062
F	0.370	-0.336	U	0.211	-0.267
G	0.230	-0.441	V	0.000	-0.323
H	0.000	-0.495	W	-0.211	-0.267
J	-0.230	-0.441	X	-0.186	-0.062
K	-0.370	-0.336	Y	-0.230	0.172
L	-0.413	-0.134	Z	0.000	0.028
M	-0.461	0.100	a	0.000	-0.151