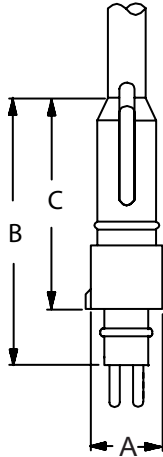


Underwater Interconnect Assemblies

Cable assemblies and bulkhead connectors

SUBSEA/DEEPWATER: MARINE MOLDED

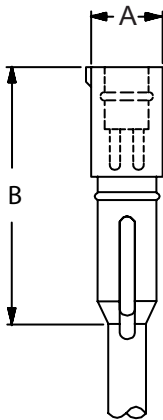
MALE CABLE ASSEMBLIES



Number of Contacts	Contact Quantity/Size	Cable Length*	Part Number	A Dia	B	C
2	1 #10, 1#12	2 feet	GL20G2P-M	.75 (19.1)	2.65 (67.3)	2.00 (50.8)
3	1 #10, 2 #12	2 feet	GL20G3P-M	.75 (19.1)	2.65 (67.3)	2.00 (50.8)
4	1 #12, 3 #16	2 feet	GL20G4P-M	.75 (19.1)	2.65 (67.3)	2.00 (50.8)
	1 #10, 3 #12	2 feet	GL20K4P-M	1.06 (26.9)	3.25 (82.6)	2.62 (66.5)
5	1 #10, 4 #16	2 feet	GL20K5P-M	1.06 (26.9)	3.25 (82.6)	2.62 (66.5)
6	1 #12, 5 #16	2 feet	GL20K6P-M	1.06 (26.9)	3.25 (82.6)	2.62 (66.5)
8	1 #12, 7 #16	2 feet	GL20K8P-M	1.06 (26.9)	3.25 (82.6)	2.62 (66.5)

*For other lengths, add overall length in feet to the part number.
Example: **GL20G1P-M-6** specifies a cable assembly 6 feet in length

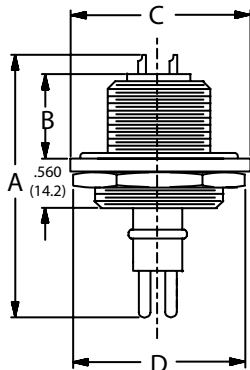
FEMALE CABLE ASSEMBLIES



Number of Contacts	Contact Quantity/Size	Cable Length*	Part Number	A Dia	B
2	1 #10, 1#12	2 feet	GL20G2S-F	.75 (19.1)	2.65 (67.3)
3	1 #10, 2 #12	2 feet	GL20G3S-F	.75 (19.1)	2.65 (67.3)
4	1 #12, 3 #16	2 feet	GL20G4S-F	.75 (19.1)	2.65 (67.3)
	1 #10, 3 #12	2 feet	GL20K4S-F	1.06 (26.9)	3.50 (88.9)
5	1 #10, 4 #16	2 feet	GL20K5S-F	1.06 (26.9)	3.50 (88.9)
6	1 #12, 5 #16	2 feet	GL20K6S-F	1.06 (26.9)	3.50 (88.9)
8	1 #12, 7 #16	2 feet	GL20K8S-F	1.06 (26.9)	3.50 (88.9)

*For other lengths, add overall length in feet to the part number.
Example: **GL20G1S-F-6** specifies a cable assembly 6 feet in length

MALE BULKHEAD CONNECTORS



Number of Contacts	Contact Quantity/Size	Part Number	A	B	C Max	D Hex	E Thread
2	1 #10, 1#12	GL30G2P-BC	2.625 (66.7)	.625 (15.9)	1.58 (40.1)	1.375 (34.9)	3/4 - 16
3	1 #10, 2 #12	GL30G3P-BC	2.625 (66.7)	.625 (15.9)	1.58 (40.1)	1.375 (34.9)	3/4 - 16
4	1 #12, 3 #16	GL30G4P-BC	2.625 (66.7)	.625 (15.9)	1.58 (40.1)	1.375 (34.9)	3/4 - 16
	1 #10, 3 #12	GL30K4P-BC	3.625 (92.1)	1.375 (34.9)	1.89 (48.0)	1.625 (41.3)	1 - 14
5	1 #10, 4 #16	GL30K5P-BC	3.625 (92.1)	1.375 (34.9)	1.89 (48.0)	1.625 (41.3)	1 - 14
6	1 #12, 5 #16	GL30K6P-BC	3.625 (92.1)	1.375 (34.9)	1.89 (48.0)	1.625 (41.3)	1 - 14
8	1 #12, 7 #16	GL30K8P-BC	3.625 (92.1)	1.375 (34.9)	1.89 (48.0)	1.625 (41.3)	1 - 14