



SERIES SG55 10K PSI / 700 BAR / 7000M

# SuperG55™ High-Pressure, Dry-Mate Subsea Connectors

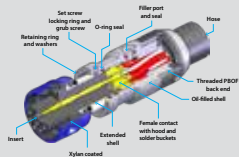


## Product selection guide

### REFERENCE INFORMATION

Materials, contact arrangements, and performance specifications

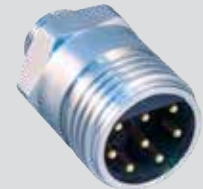
pg. 21



### G55 07 -EL

SuperG55™ 07 Bulkhead Connector Receptacle with Earth Lead / Ground Pin (BCR-EL)

pg. 31



### G55 01

SuperG55™ 01 Cable Connector Plug (CCP), pre-wired

pg. 27



### G55 A1 AND G55 OFA1

SuperG55™ Cable Connector Plug (CCP) and Cable Connector Plug, Oil Filled (CCP-OF), Solder Cup Termination

pg. 32



### G55 06

SuperG55™ 06 Flange Connector Receptacle (FCR), solder cup termination

pg. 28



### G55 OF1

SuperG55™ Cable Connector Plug, with Clamped Hose

pg. 33



### G55 06IF

SuperG55™ 06IF Indexable Flange Connector Receptacle (IFCR), solder cup termination

pg. 29



### G55 R1

SuperG55™ Cable Connector Plug, Right Angle (CCP-RA), pre-wired

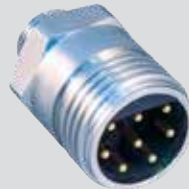
pg. 34



### G55 07

SuperG55™ 07 Bulkhead Connector Receptacle (BCR)

pg. 30



### G55 D1

SuperG55™ Dummy Plug

pg. 35



SUBSEA/ DEEPWATER: SUPERG55™

