



SERIES 927-072
ITS-Ex Hazardous Zone Connectors
 Connector configurations

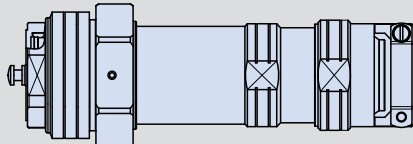


Connectors Configurations

Base Part Number and Description

Cable Plug with Mechanical Clamp and Potting Well

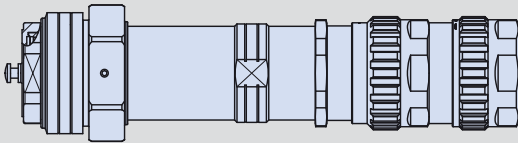
927-072-016-



Plug with mechanical cable clamp and potting well: 927-072-016 incorporates a potting well /cable adapter which must be filled with supplied 2-part epoxy for certified Ex d performance. Various cable entry sizes for popular armored and unarmored cable are supported. Protective safety cover included.

Cable Plug with Ex d Cable Gland

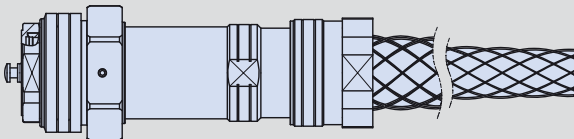
927-072-026-



Plug with "Ex d" certified cable gland (potting is not required): 927-072-026 is supplied with an industry-standard Ex d certified cable gland, ready for immediate use. Various cable entry sizes for popular armored and unarmored cable are supported. Protective safety cover included.

Cable Plug with Basket Weave Cable Grip

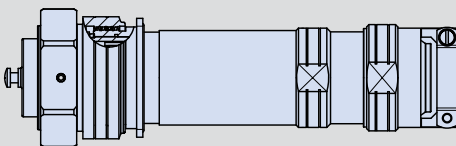
927-072-036-



Plug with basket-weave cable grip and potting well: 927-072-036 incorporates a potting well /cable adapter which must be filled with supplied 2-part epoxy for certified Ex d performance. Various cable entry sizes for popular armored and unarmored cable are supported. Protective safety cover included.

Fixed In-Line Receptacle with Mechanical Clamp

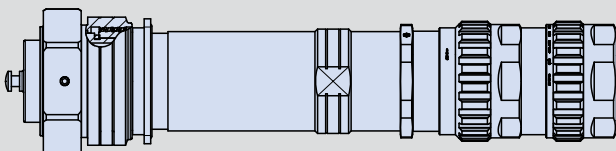
927-072-012-



Fixed in-line receptacle with mechanical cable clamp and potting well: 927-072-012 incorporates a potting well /cable adapter which must be filled with supplied 2-part epoxy for certified Ex d performance. Various cable entry sizes for popular armored and unarmored cable are supported. Protective safety cover included.

Fixed In-Line Receptacle with Ex d Cable Gland

927-072-022-



Fixed in-line receptacle with "Ex d" certified cable gland (potting is not required): 927-072-022 is supplied with an industry-standard Ex d certified cable gland, ready for immediate use. Various cable entry sizes for popular armored and unarmored cable are supported. Protective safety cover included.

TOPSIDE: ITS-EX™

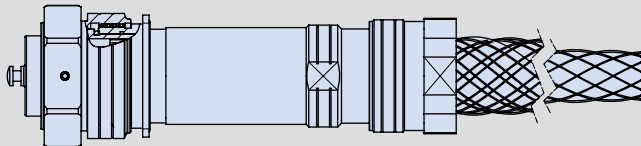


SERIES 927-072
ITS-Ex Hazardous Zone Connectors
 Connector configurations



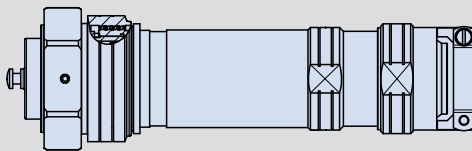
Connectors Configurations **Base Part Number and Description**

Fixed In-Line Receptacle with Cable Grip **927-072-032-**



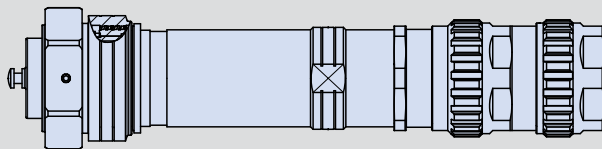
Fixed in-line receptacle with basket-weave cable grip and potting well: 927-072-032 incorporates a potting well/cable adapter which must be filled with supplied 2-part epoxy for certified Ex d performance. Various cable entry sizes for popular armored and unarmored cable are supported. Protective safety cover included.

In-Line Receptacle with Mechanical Cable Clamp **927-072-011-**



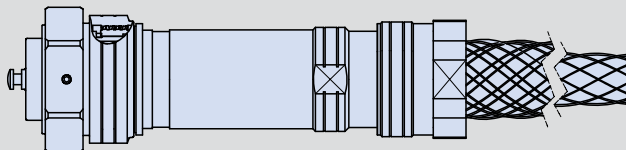
In-Line receptacle with mechanical cable clamp and potting well: 927-072-011 incorporates a potting well/cable adapter which must be filled with supplied 2-part epoxy for certified Ex d performance. Various cable entry sizes for popular armored and unarmored cable are supported. Protective safety cover included.

In-Line Receptacle with Ex d Cable Gland **927-072-021-**



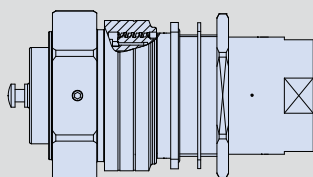
In-Line receptacle with "Ex d" certified cable gland (potting is not required): 927-072-021 is supplied with an industry-standard Ex d certified cable gland, ready for immediate use. Various cable entry sizes for popular armored and unarmored cable are supported. Protective safety cover included.

In-Line Receptacle with Basket Weave Cable Grip **927-072-031-**



Flange-mount receptacle with basket-weave cable grip and potting well: 927-072-031 incorporates a potting well/cable adapter which must be filled with supplied 2-part epoxy for certified Ex d performance. Various cable entry sizes for popular armored and unarmored cable are supported. Protective safety cover included.

Panel-Mount Fixed Receptacle* **927-072-003-**



Panel mount fixed receptacle with potting well: 927-072-003 is designed for use in certified Ex d flame-proof enclosures. An auxiliary lock nut is supplied for blowout protection in Ex e increased safety enclosures. The receptacle incorporates a potting well which must be filled with supplied 2-part epoxy for certified Ex d performance. Protective safety cover included.

*Final IEC ATEX Ex d certification pending for this configuration only. Consult factory for status

