



**DEEP
WATER**

Photo: NOAA

ADVANCED PERFORMANCE SERIES 55 TYPE 10K PSI **SuperG55™**

The SuperG55™ family of dry-mate underwater deep-sea high-pressure connectors are a revolutionary new design of the popular industry-standard used in countless ROV, underwater camera, diver communications, lights, pan and tilts, and other deep subsea applications.

Available in multiple shell sizes, the SuperG55™ is manufactured from 316L Stainless Steel with insert molded contact assemblies designed for pressure-sealed applications up to 10K PSI mated and unmated. Intermateable and intermountable with other "55" series connectors, the Glenair solution introduces a long list of product innovations designed to improve performance and durability. Our PBOF versions, for example, utilize

easy-to-assemble threaded fittings which deliver both superior sealing performance while reducing installation time. Other innovations include full-mate inspection ports, improved solder cup contact design and more. Cable plugs and receptacles available in attachable (user-terminatable) versions as well as factory overmolded single-ended whips.

Bulkhead Connector
Receptacle (BCR)



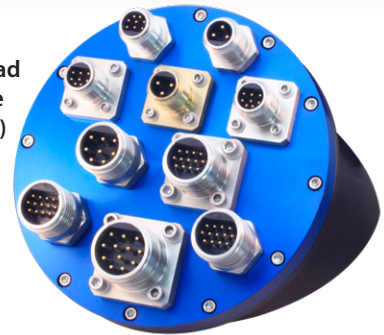
Factory-
terminated
overmolded
Cable Connector
Plug (CCP)



Flange Connector
Receptacle (FCR)



High-pressure
open face bulkhead
(BCR) and flange
receptacles (FCR)



- **10,000 PSI mated/unmated (approx. 22,500ft/7,000m)**
- **Recessed socket contacts in plugs for electrical safety**
- **Intermateable and intermountable with other "55" series connectors**
- **4 shell sizes — 15, 20, 24 and 32 with 3 to 39 contacts**
- **PBOF versions available**
- **600 VDC, 5 to 18 Amps (dependent on conductor and cable size and make-up)**

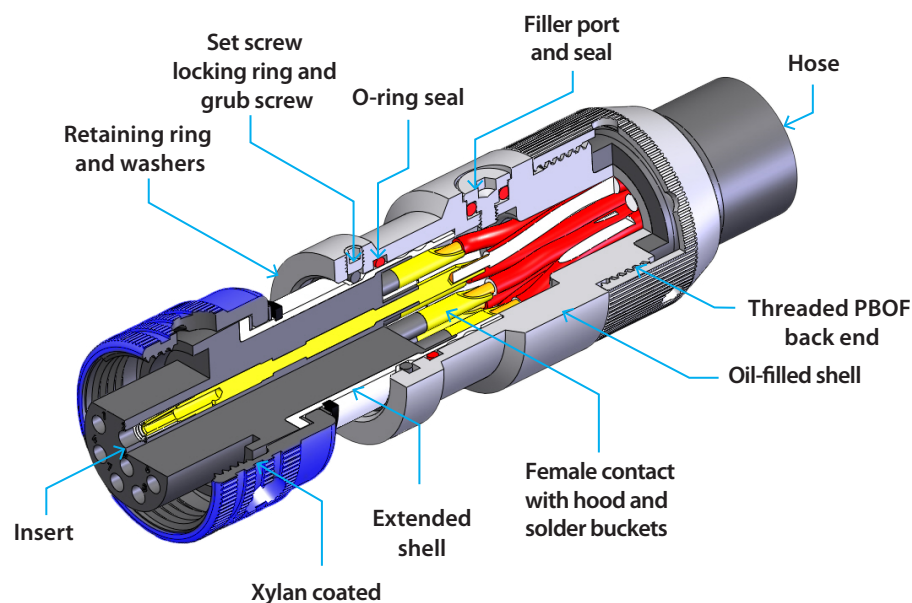


10K PSI / 700 BAR / 7000M Advanced-Performance Series 55 Type SuperG55 10K PSI



Key mechanical and environmental features

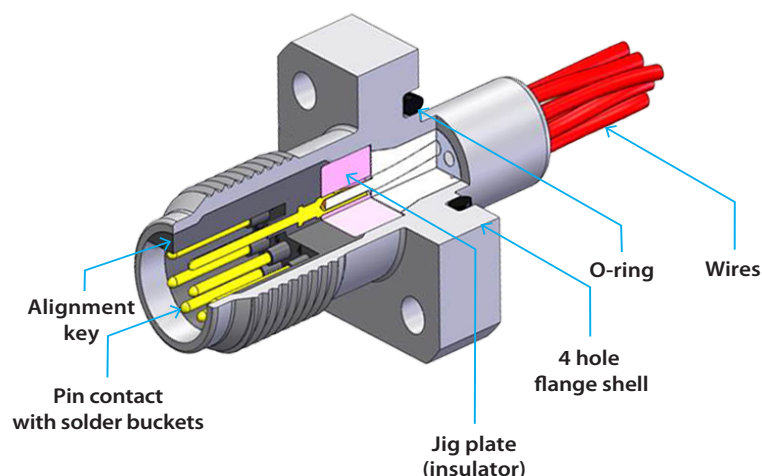
SUPERG55™ PRESSURE-BALANCED OIL-FILLED CABLE CONNECTOR PLUG (CCP)



SuperG55™ Performance Specifications	
Mating Cycles	500
Pressure	689 Bar (10,000 PSI) Mated and Un-mated
Operating Temperature	-20°C to +90°C
Voltage Rating	600 VDC / 440 Vac
Current (max.)	5 to 18 Amps (dependant on contact and cable conductor sizes)

SuperG55™ Material/Finish	
Shells	316L Stainless Steel/ Passivated
Insulator	PEEK/NA
Insert	Neoprene/NA
Contacts	Copper Alloy/Gold Plated
O-rings	Nitrile/NA
Overmold and Cable	Polyurethane or Neoprene/NA
Coupling Nut	316L Stainless Steel/ Protective Coating Blue
Bulkhead Receptacle Tails	PTFE Insulated 16 AWG Wire/NA
Cable	Polyurethane or Neoprene Jacketed/NA

SUPERG55™ FLANGE CONNECTOR RECEPTACLE (FCR)



NON-STANDARD MATERIALS: Other material options are available as part of our non-catalog offerings including anodized aluminum, titanium, and aluminum bronze. Glenair is also able to supply SuperG55™ interconnects in composite thermoplastic (PEEK) to meet application requirements for reduced cathodic corrosion as well as weight reduction without affecting connector performance.

HIGH-SPEED ETHERNET: The SuperG55™ Ethernet option is available in the 1508, 2013 and 2022 contact configurations and provides both high speed (Up to 1GB) and power (600 Volts) in a full subsea environment (10,000 PSI). Gigabit speed data transfer up to a distance of 75mtrs.

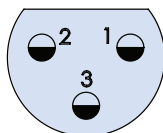
Material Finish Codes			
Code	Material/Finish	Code	Material/Finish
	Anodized Aluminum	PK	Composite Thermoplastic (PEEK)
NAB2	Aluminum Bronze	B	Brass
T	Titanium	Alternative materials available, contact factory	



10K PSI / 700 BAR / 7000M Advanced-Performance Series 55 Type SuperG55 10K PSI Insert arrangements

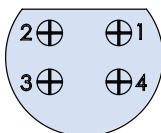


SUPERG55™ INSERT ARRANGEMENTS Mating face view of pin insert (socket insert IDs are reversed)



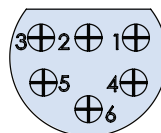
1503

3 Size #12 AWG
Contacts



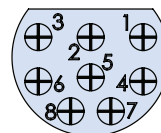
1504

4 Size #16 AWG
Contacts



1506

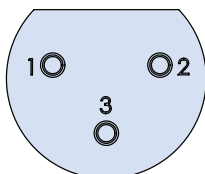
6 size #16 AWG
Contacts



1508*

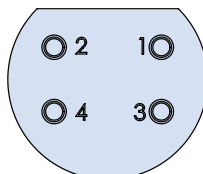
8 size #16 AWG
Contacts

Shell Size 15



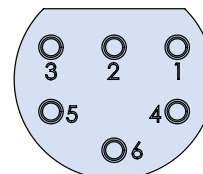
2003

3 Size #10 AWG
Contacts



2004

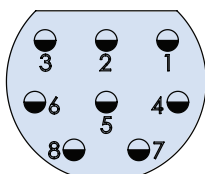
4 Size #10 AWG
Contacts



2006

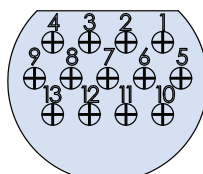
6 Size #10 AWG
Contacts

Shell Size 20



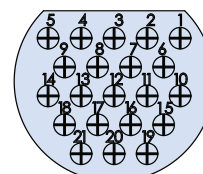
2008*

8 Size #12 AWG
Contacts



2013*

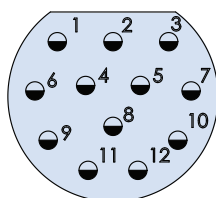
13 Size #16 AWG
Contacts



2021*

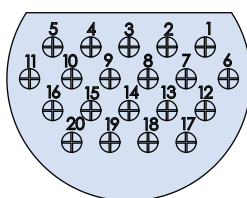
21 Size #16 AWG
Contacts

Shell Size 20



2412

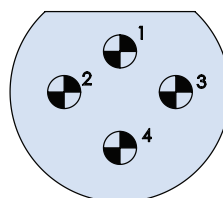
12 Size #12 AWG
Contacts



2420

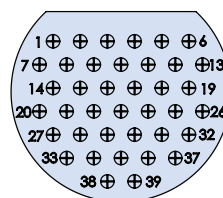
20 Size #16 AWG
Contacts

Shell Size 24



3204***

4 Size #6 AWG
Contacts



3239**

39 Size #16 AWG
Contacts

Shell Size 32

Bulkhead Mounting Torque (Values are for dry non-lubricated threads)	Size 15 - 14.12NM (125LB. INS.) Size 20 - 18.64NM (165LB.INS.) Size 24 - 25.42NM (225LB.INS.) Size 32 - TBD
---	--

*Compatible with high-speed Ethernet
**3239 is not intermateable with any other brand of
connector. Contact factory for details
*** Contact factory for availability
Custom insert arrangements available, contact factory.



10K PSI / 700 BAR / 7000M
Advanced-Performance
Series 55 Type SuperG55 10K PSI
SuperG55 Series connectors



G55 A1 ATTACHABLE CABLE CONNECTOR PLUG (CCP)



SuperG55™ - How To Order						
Sample Part Number	G55A1	-1508	-0000			
Series	SuperG55™ = underwater dry-mate, long version (CCP), attachable					
Shell Size/Insert Arrangement Size	See shell size / insert arrangements (page 48)					
Overall Length	In feet (0000 = no cable, 0001 = one foot, etc.)					
Potting Boot	PB = potting boot; omit for none. Not required if used for OFR1					
Material Option	Omit for stainless steel PK = peek coupling nut and barrel B = brass coupling nut and barrel See material options on page 47					

G55 01 STRAIGHT OVERMOLDED, CABLE PLUG (CCP)



SuperG55™ - How To Order						
Sample Part Number	G5501	-1508	-0004			
Series	SuperG55™ = underwater dry-mate, straight overmolded CCP					
Shell Size/Insert Arrangement	See shell size / insert arrangements (page 48)					
Cable Length	In feet (0001 = one foot, 0002 = two feet etc.)					
Inch Increments	3, 6 or 9 inches; omit for whole feet lengths					
Material Option	Omit for stainless steel PK = peek coupling nut and barrel B = brass coupling nut and barrel See material options on page 47					
Back-to-Back	B2B = back-to-back; omit if not required					

G55 R1 RIGHT ANGLE OVERMOLDED, CABLE CONNECTOR PLUG (CCP)



SuperG55™ - How To Order						
Sample Part Number	G55R1	-1508	-0004			
Series	SuperG55™ = underwater dry-mate, right angle overmolded CCP					
Shell Size/Insert Arrangement	See shell size / insert arrangements (page 48)					
Cable Length	In feet (0001 = one foot, 0002 = two feet etc.)					
Inch Increments	3, 6 or 9 inches; omit for whole feet lengths					
Material Option	Omit for stainless steel PK = peek coupling nut and barrel B = brass coupling nut and barrel See material options on page 47					
Back-to-Back	B2B = back-to-back; omit if not required					



10K PSI / 700 BAR / 7000M
Advanced-Performance
Series 55 Type SuperG55 10K PSI
SuperG55 Series connectors



G55 OF1 STRAIGHT OIL-FILLED CABLE CONNECTOR PLUG (CCP)



SuperG55™ - How To Order				
Sample Part Number		G55OF1	-1508	-0010
Series	SuperG55™ = Underwater dry-mate, straight oil-filled CCP			
Shell Size/Insert Arrangement	See shell size / insert arrangements (page 48)			
Overall Length	In feet (0000 = no cable, no hose 0001 = one foot, etc.)			
Back-to-Back*	B2B = back-to-back (min. 7ft hose length); omit if not required			

*Consult factory for additional back-to-back options

G55 OFR1 RIGHT ANGLE OIL-FILLED CABLE CONNECTOR PLUG (CCP)



SuperG55™ - How To Order				
Sample Part Number		G55OFR1	-1508	-0010
Series	SuperG55™ = Underwater dry-mate, right angle oil-filled CCP			
Shell Size/Insert Arrangement	See shell size / insert arrangements (page 48)			
Overall Length	In feet (0000 = no cable, no hose 0001 = one foot, etc.)			
Back-to-Back*	B2B = back-to-back (min. 7ft hose length); omit if not required			

*Consult factory for additional back-to-back options

G55 06 FLANGE CONNECTOR RECEPTACLE (FCR)



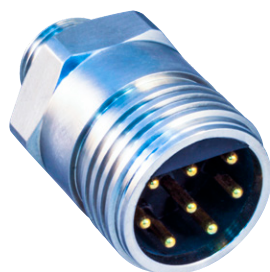
SuperG55™ - How To Order				
Sample Part Number		G5506	-2013	-0004
Series	SuperG55™ = underwater dry-mate, flange connector receptacle (FCR)			
Shell Size/Insert Arrangement	See shell size / insert arrangements (page 48)			
Cable Length	In feet (0001 = 1 foot, 0004 = 4 feet, standard length)			
Material Option	Omit for stainless steel B = brass coupling nut and barrel PK = peek coupling nut and barrel See material options on page 47			



10K PSI / 700 BAR / 7000M Advanced-Performance Series 55 Type SuperG55 10K PSI SuperG55 Series connectors

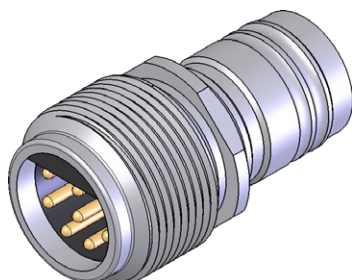


G55 07 BULKHEAD CONNECTOR RECEPTACLE (BCR)



SuperG55™ - How To Order				
Sample Part Number	G5507	-1508	-0004	
Series	SuperG55™ = underwater dry-mate, bulkhead connector receptacle (BCR)			
Shell Size/Insert Arrangement	See shell size / insert arrangements (page 48)			
Cable Length	In feet (0001 = 1 foot, 0004 = 4 feet, standard length)			
Material Option	Omit for stainless steel PK = peek coupling nut and barrel B = brass coupling nut and barrel See material options on page 47			

G55 A2 ATTACHABLE CABLE CONNECTOR RECEPTACLE (CCR)



SuperG55™ - How To Order				
Sample Part Number	G55A2	-1508	-0000	
Series	SuperG55™ = underwater dry-mate, attachable cable connector receptacle (CCR)			
Shell Size/Insert Arrangement	See shell size / insert arrangements (page 48)			
Cable Length	In feet (0000 = no cable, 0001 = one foot, etc.)			
Material Option	Omit for stainless steel PK = peek coupling nut and barrel B = brass coupling nut and barrel See material options on page 47			

*Currently only 1504, 1506, 1508, 2013, 2022 & 2420 insert arrangements are available.

G55 02 STRAIGHT OVERMOLDED CABLE CONNECTOR RECEPTACLE (CCR)



SuperG55™ - How To Order					
Sample Part Number	G5502	-1508	-0004		
Series	SuperG55™ = underwater dry-mate, straight overmolded CCR				
Shell Size/Insert Arrangement	See shell size / insert arrangements (page 48)				
Cable Length	In feet (0001 = one foot, 0002 = two feet etc.)				
Inch Increments	3, 6 or 9 inches; omit for whole feet lengths				
Material Option	Omit for stainless steel PK = peek coupling nut and barrel B = brass coupling nut and barrel See material options on page 47				
Back-to-Back	B2B = back-to-back; omit if not required				



10K PSI / 700 BAR / 7000M Advanced-Performance Series 55 Type SuperG55 10K PSI SuperG55 Series connectors



G55 R2 RIGHT ANGLE OVERMOLDED CABLE CONNECTOR RECEPTACLE (CCR)



SuperG55™ - How To Order					
Sample Part Number	G55R2	-1508	-0004		
Series	SuperG55™ = underwater dry-mate, right angle overmolded CCR				
Shell Size/Insert Arrangement	See shell size / insert arrangements (page 48)				
Cable Length	In feet (0001 = one foot, 0002 = two feet etc.)				
Inch Increments	3, 6 or 9 inches; omit for whole feet lengths				
Material Option	Omit for stainless steel PK = peek coupling nut and barrel B = brass coupling nut and barrel See material options on page 47				
Back-to-Back	B2B = back-to-back; omit if not required				

G55 OF2 STRAIGHT OIL-FILLED CABLE CONNECTOR RECEPTACLE (CCR)



SuperG55™ - How To Order				
Sample Part Number	G55OF2	-1508	-0010	
Series	SuperG55™ = Underwater dry-mate, straight oil-filled CCR			
Shell Size/Insert Arrangement*	See shell size / insert arrangements (page 48)			
Overall Length	In feet (0000 = no cable, no hose, 0001 = one foot, etc.)			
Back-to-Back**	B2B = back-to-back (min. 7ft hose length); omit if not required			

*Currently only 1504, 1506, 1508, 2013, 2022, and 2420 insert arrangements are available

**Consult factory for additional back-to-back options

G55 OFR2 RIGHT ANGLE OIL-FILLED CABLE CONNECTOR RECEPTACLE (CCR)



SuperG55™ - How To Order			
Sample Part Number	G55OFR2	-1508	-0010
Series	SuperG55™ = Underwater dry-mate, right angle oil-filled CCR		
Shell Size/Insert Arrangement*	See shell size / insert arrangements (page 48)		
Overall Length	In feet (0000 = no cable, no hose, 0001 = one foot, etc.)		
Back-to-Back*	B2B = back-to-back (min. 7ft hose length); omit if not required		

*Currently only 1504, 1506, 1508, 2013, 2022, and 2420 insert arrangements are available

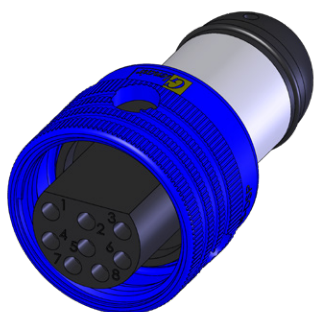
**Consult factory for additional back-to-back options



10K PSI / 700 BAR / 7000M
Advanced-Performance
Series 55 Type SuperG55 10K PSI
SuperG55 Series connectors

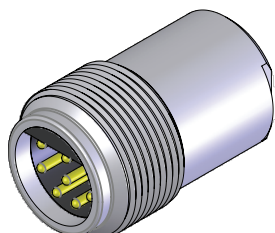


G55 D1 DUMMY SEALING PLUG (DSP)



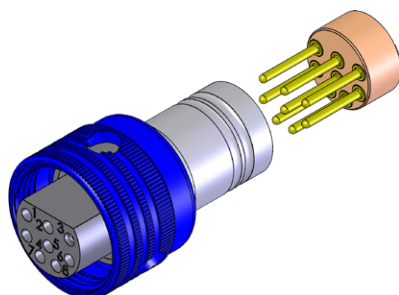
SuperG55™ - How To Order				
Sample Part Number	G55D1	-1508	-0000	
Series	SuperG55™ = dummy sealing plug (DSP)			
Shell Size/Insert Arrangement	See shell size / insert arrangements (page 48)			
Cable Length	0000 = no cable			
Material Option	Omit for stainless steel PK = peek coupling nut and barrel B = brass coupling nut and barrel See material options on page 47			

G55 D2 DUMMY SEALING RECEPTACLE (DSR)



SuperG55™ - How To Order				
Sample Part Number	G55D2	-1508	-0000	
Series	SuperG55™ = dummy sealing receptacle (DSR)			
Shell Size/Insert Arrangement	See shell size / insert arrangements (page 48)			
Cable Length	0000 = no cable			
Material Option	Omit for stainless steel PK = peek coupling nut and barrel B = brass coupling nut and barrel See material options on page 47			

G55 M1 SOCKET TO SOCKET (CCP)



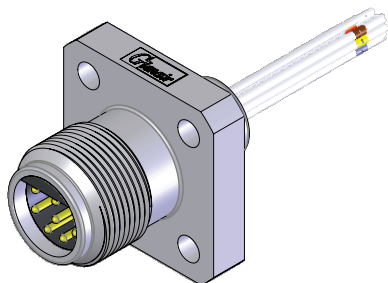
SuperG55™ - How To Order				
Sample Part Number	G55M1	-1508	-0001	
Series	SuperG55™ = underwater dry-mate, back-to-back socket CCP			
Shell Size/Insert Arrangement	See shell size / insert arrangements (page 48)			
Cable Length	In feet (0000 = no cable, 0001 = one foot, etc.)			
Material Option	Omit for stainless steel PK = peek coupling nut and barrel B = brass coupling nut and barrel See material options on page 47			



10K PSI / 700 BAR / 7000M
Advanced-Performance
Series 55 Type SuperG55 10K PSI
SuperG55 Series custom connectors



G55 06 FLANGE CONNECTOR RECEPTACLE (FCR) WITH EARTH LEAD



SuperG55™ - How To Order					
Sample Part Number		G5506	-1508	-0004	-EL
Series	SuperG55™ = underwater dry-mate, FCR with earth lead				
Shell Size/Insert Arrangement	See shell size / insert arrangements (page 48)				
Cable Length	In feet (0001 = 1 foot, 0004 = 4 feet, standard length)				
Earth Lead	EL = earth lead (ground)				
Material Option	T = titanium; omit for stainless steel				

G55 07 BULKHEAD CONNECTOR RECEPTACLE (BCR) WITH EARTH LEAD



SuperG55™ - How To Order					
Sample Part Number		G5507	-1508	-0004	-EL
Series	SuperG55™ = underwater dry-mate, BCR with earth lead				
Shell Size/Insert Arrangement	See shell size / insert arrangements (page 48)				
Cable Length	In feet (0001 = 1 foot, 0004 = 4 feet, standard length)				
Earthing Lead	EL = earth lead (ground)				
Material Option	T = titanium; omit for stainless steel				

G55 06IF FLANGE CONNECTOR RECEPTACLE (FCR) WITH INDEXABLE FLANGE



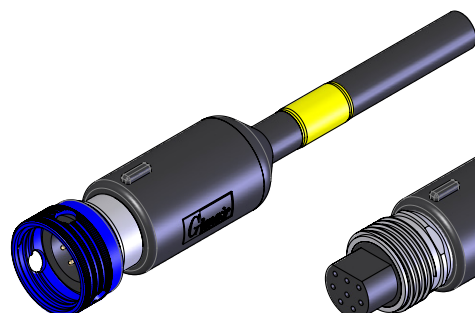
SuperG55™ - How To Order				
Sample Part Number		G5506IF	-1508	-0004
Series	SuperG55™ = underwater dry-mate, flange connector receptacle (FCR) with indexable flange			
Shell Size/Insert Arrangement	See shell size / insert arrangements (page 48)			
Cable Length	In feet (0001 = 1 foot, 0004 = 4 feet, standard length)			
Material Option	Omit for stainless steel B = brass coupling nut and barrel PK = peek coupling nut and barrel See material options on page 47			



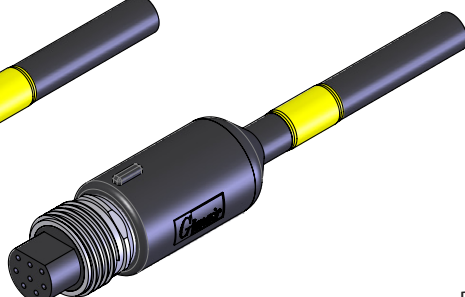
10K PSI / 700 BAR / 7000M Advanced-Performance Series 66 Type SuperG66 10K PSI SuperG66 reverse-gender connectors



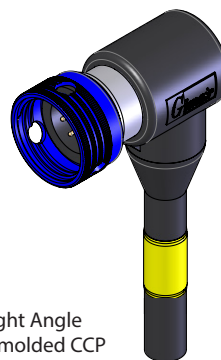
G66 OVERMOLDED CABLE CONNECTOR PLUGS AND RECEPTACLES



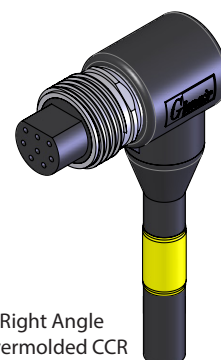
Overmolded CCP
G6601



Overmolded CCR
G6602



Right Angle
Overmolded CCP
G66R1

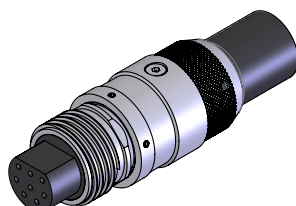


Right Angle
Overmolded CCR
G66R2

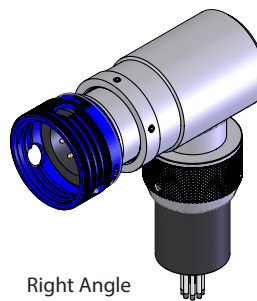
G66 OIL-FILLED CABLE CONNECTOR PLUGS AND RECEPTACLES



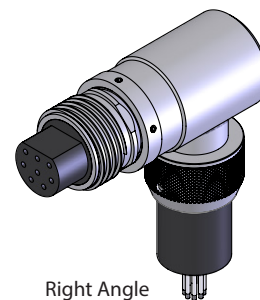
Oil-filled CCP
G66OF1



Oil-filled CCR
G66OF2

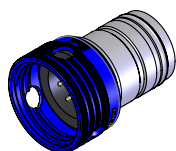


Right Angle
Oil-filled CCP
G66OFR1

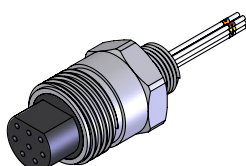


Right Angle
Oil-filled CCR
G66OFR2

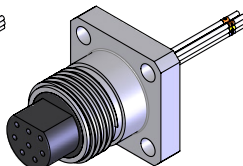
G66 CABLE CONNECTOR PLUGS AND BULKHEAD, FLANGE AND CABLE CONNECTOR RECEPTACLES



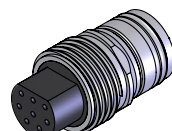
Cable Connector
Plug
G66A1



Bulkhead Connector
Receptacle
G6607

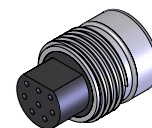


Flange Connector
Receptacle
G6606

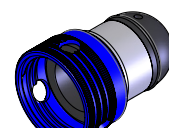


Cable Connector
Receptacle
G66A2

DUMMY SEALING PLUG AND RECEPTACLE



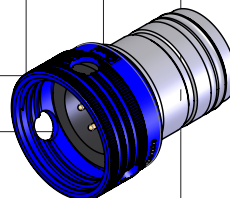
Dummy Sealing
Receptacle
G66D2



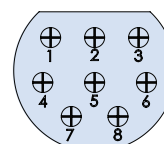
Dummy Sealing
Plug
G66D1

COMING SOON: SuperG66™ - Consult factory for availability

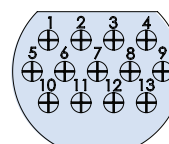
Sample Part Number	G66A1	-2008	-0000	
Series	SuperG66™ = underwater dry-mate, cable connector plug (CCP)			
Shell Size/Insert Arrangement	See shell size / insert arrangements (page 48)			
Cable Length	0000 = no cable; also available in specified lengths for test purposes			
Material Option	Omit for stainless steel PK = peek coupling nut and barrel B = brass coupling nut and barrel Reference material options on page 47			
Potting Boot	PB = potting boot; omit if not required. Not required if changed to OFR1			



INSERT ARRANGEMENTS



2008
8 x #16



2013
13 x #16

Additional insert arrangements can be engineered, contact factory