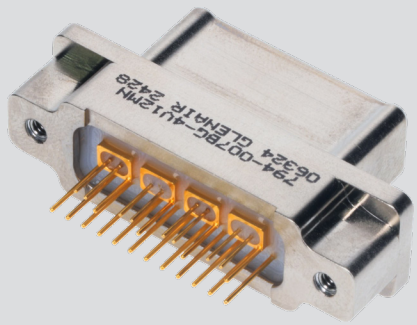
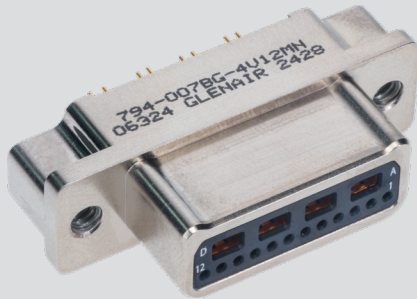


"ZERO-CROSSTALK" Series 794 VersaLink™ Connectors



794-007 VersaLink Straight PCB Mount, Socket Contact Plug

SERIES 794 VERSALINK CONNECTORS

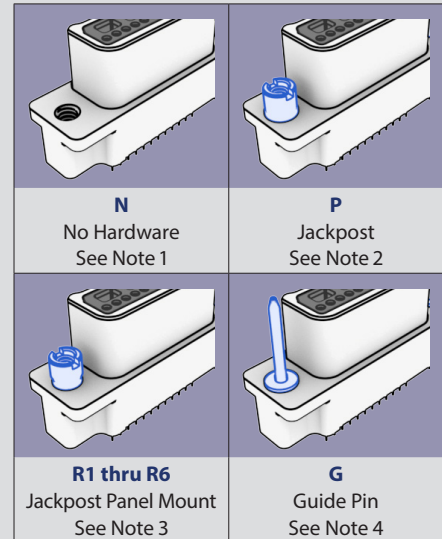


PART NUMBER DEVELOPMENT						
Sample Part Number	794-007	S	G-4V12	M	N	-A
Series	794-007 = Straight PCB Mount Plug					
Contacts	S = Socket Contacts					
Shell Size-Insert Arrangement	See Insert Arrangement Table 799-184					
Shell Finish	M = Electroless Nickel MT = Nickel Teflon					
Hardware Option	P = Jackpost R1 thru R6 = Jackpost, Panel Mount G = Guide Pin N = No Hardware					
Optional Shell Keying	A, B, C, D, E, F, G, H, J, K, L, M; Omit for none (see mod code 1279)					

INSERT ARRANGEMENTS

Shell Size-Insert Arrangement	No. of Contacts	
	VersaLink	22HD
A-1V	1	0
B-2V	2	0
B-1V4	1	4
C-2V2	2	2
D-2V4	2	4
E-3V4	3	4
E-2V6	2	6
F-4V	4	0
G-4V12	4	12
H-6V16	6	16
J-6V	6	0
K-8V	8	0
L-7V20	7	20
P-4V	4	0
Q-8V8	8	0
R-10V	10	0
R-8V16	8	16
S-14V	14	0
T-18V	16	0
U-36V	36	0

HARDWARE



- Thread size is #6-32 for shell sizes A,B,C,D,E,F,G,J,K
Thread size is #8-32 for shell sizes H & L
Thread size is #8-32 for shell sizes P,Q,R,S,T,U
- Thread size is #2-56 for shell sizes A, B, C, D, E, F, G, J, K
Thread size is #4-40 for shell sizes H & L
Thread size is #8-32 for shell sizes P, 1, R, S, T, U
- R1 - .032 (.081) Panel
R2 - .050 (1.27) Panel
R3 - .062 (1.59) Panel
R4 - .080 (2.03) Panel
R5 - .093 (2.36) Panel
R6 - .125 (3.18) Panel
Thread sizes same as "P" jackpost option
- Connector supplied with non-removable guide pin

MATERIALS AND FINISHES

- VersaLink Module
- Contact: Copper Alloy/gold
- Insulator: rigid dielectric/N.A.
- Shield: copper alloy/gold
- #22HD Contact
- Contacts: copper alloy 50 microinches gold over nickel
- Socket contact hood: stainless steel passivated
- Shell: aluminum alloy 6061
- Insulators: high-grade rigid dielectric
- Grommet: fluorosilicone blend elastomer
- Hardware: 300 series stainless steel passivated
- Potting compound: epoxy

PERFORMANCE SPECIFICATIONS

- Operating temperature: -65°C to +200°C

NOTES

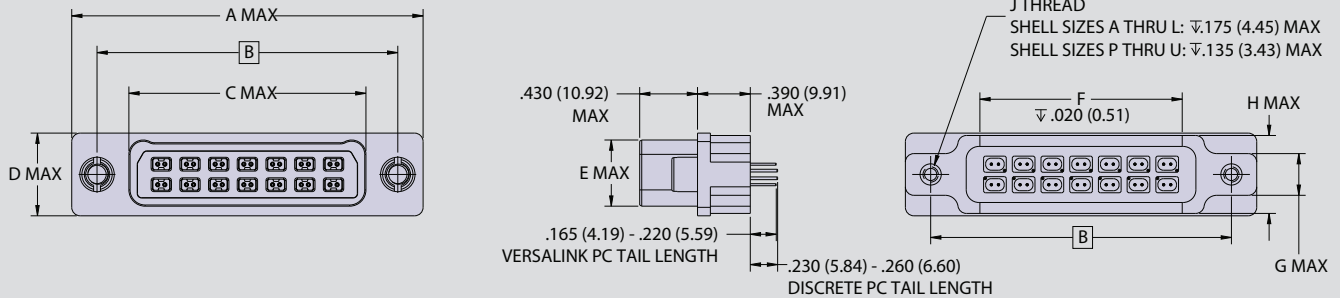
- Refer to 799-184 for insert arrangements on page 48
- Refer to Modification Code 1279 for polarizing key options on page 49.
- Refer to Series 794 material & finish for unshielded wire layouts on page 50.
- Refer to Series 794 PCB Footprints for unshielded wire layouts on page 78

"ZERO-CROSSTALK" Series 794 VersaLink™ Connectors



794-007 VersaLink Straight PCB Mount, Socket Contact Plug

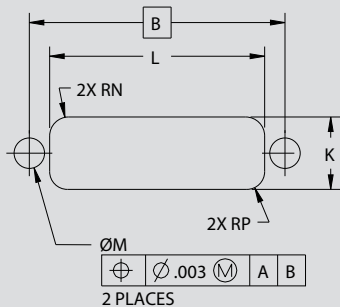
794-007 VERSALINK STRAIGHT PCB MOUNT, SOCKET PLUG CONNECTOR



DIMENSIONS

SHELL SIZE	A MAX	B BSC	C MAX	D MAX	E MAX	F	G MAX	H MAX	J THREAD UNC 2B
A	1.035 (26.29)	0.750 (19.05)	0.410 (10.41)	0.415 (10.54)	0.320 (8.13)	0.200 (5.08)	0.210 (5.33)	0.415 (10.54)	#2-56
B	1.185 (30.10)	0.900 (22.86)	0.560 (14.22)	0.415 (10.54)	0.320 (8.13)	0.400 (10.16)	0.210 (5.33)	0.415 (10.54)	#2-56
C	1.335 (33.91)	1.050 (26.67)	0.710 (18.03)	0.415 (10.54)	0.320 (8.13)	0.460 (11.68)	0.210 (5.33)	0.415 (10.54)	#2-56
D	1.410 (35.81)	1.125 (28.58)	0.785 (19.94)	0.415 (10.54)	0.320 (8.13)	0.565 (14.35)	0.210 (5.33)	0.415 (10.54)	#2-56
E	1.560 (39.62)	1.275 (32.39)	0.935 (23.75)	0.415 (10.54)	0.320 (8.13)	0.775 (19.69)	0.210 (5.33)	0.415 (10.54)	#2-56
F	1.710 (43.43)	1.425 (36.20)	1.085 (27.56)	0.415 (10.54)	0.320 (8.13)	0.845 (21.46)	0.210 (5.33)	0.415 (10.54)	#2-56
G	1.673 (42.49)	1.388 (35.26)	1.047 (26.59)	0.500 (12.70)	0.420 (10.67)	0.900 (22.86)	0.300 (7.62)	0.500 (12.70)	#2-56
H	2.275 (57.79)	1.900 (48.26)	1.437 (36.50)	0.520 (13.21)	0.430 (10.92)	1.200 (30.48)	0.315 (8.00)	0.520 (13.21)	#4-40
J	2.085 (52.96)	1.800 (45.72)	1.460 (37.08)	0.415 (10.54)	0.320 (8.13)	1.230 (31.24)	0.210 (5.33)	0.415 (10.54)	#2-56
K	2.460 (62.48)	2.175 (55.25)	1.835 (46.61)	0.415 (10.54)	0.320 (8.13)	1.650 (41.91)	0.210 (5.33)	0.415 (10.54)	#2-56
L	2.511 (63.78)	2.136 (54.25)	1.673 (42.49)	0.520 (13.21)	0.430 (10.92)	1.550 (39.37)	0.315 (8.00)	0.520 (13.21)	#4-40
P	1.455 (36.96)	1.075 (27.31)	0.615 (15.62)	0.630 (16.00)	0.513 (13.03)	0.450 (11.43)	0.315 (8.00)	0.570 (14.48)	#4-40
Q	1.830 (46.48)	1.450 (36.83)	0.990 (25.15)	0.630 (16.00)	0.513 (13.03)	0.850 (21.59)	0.315 (8.00)	0.570 (14.48)	#4-40
R	2.205 (56.01)	1.825 (46.36)	1.365 (34.67)	0.630 (16.00)	0.513 (13.03)	1.200 (30.48)	0.315 (8.00)	0.570 (14.48)	#4-40
S	2.580 (65.53)	2.200 (55.88)	1.740 (44.20)	0.630 (16.00)	0.513 (13.03)	1.480 (37.59)	0.315 (8.00)	0.570 (14.48)	#4-40
T	2.955 (75.06)	2.575 (65.41)	2.115 (53.72)	0.630 (16.00)	0.513 (13.03)	1.855 (47.12)	0.315 (8.00)	0.570 (14.48)	#4-40
U	2.955 (75.06)	2.575 (65.41)	2.115 (53.72)	0.990 (25.15)	0.888 (22.56)	1.950 (49.53)	0.315 (8.00)	0.980 (24.89)	#4-40

794-007 PANEL CUT-OUT DIMENSIONS



SHELL SIZE	B BSC	K ±.002 (.051)	J ±.002 (.051)	ØM ±.003 (.076)	RN ±.002 (.051)	RP ±.002 (.051)
A	0.750 (19.05)	0.418 (10.62)	0.505 (12.83)	0.210 (5.33)	0.110 (2.79)	0.164 (4.17)
B	0.900 (22.86)	0.418 (10.62)	0.655 (16.64)	0.210 (5.33)	0.110 (2.79)	0.164 (4.17)
C	1.050 (26.67)	0.418 (10.62)	0.805 (20.45)	0.210 (5.33)	0.110 (2.79)	0.164 (4.17)
D	1.125 (28.58)	0.418 (10.62)	0.880 (22.35)	0.210 (5.33)	0.110 (2.79)	0.164 (4.17)
E	1.275 (32.39)	0.418 (10.62)	1.030 (26.16)	0.210 (5.33)	0.110 (2.79)	0.164 (4.17)
F	1.425 (36.20)	0.418 (10.62)	1.180 (29.97)	0.210 (5.33)	0.110 (2.79)	0.164 (4.17)
G	1.388 (35.26)	0.506 (12.85)	1.142 (29.01)	0.210 (5.33)	0.110 (2.79)	0.164 (4.17)
H	1.900 (48.26)	0.521 (13.23)	1.531 (38.89)	0.236 (5.99)	0.150 (3.81)	0.139 (3.53)
J	1.800 (45.72)	0.418 (10.62)	1.555 (39.50)	0.210 (5.33)	0.110 (2.79)	0.164 (4.17)
K	2.175 (55.25)	0.418 (10.62)	1.930 (49.02)	0.210 (5.33)	0.110 (2.79)	0.164 (4.17)
L	2.136 (54.25)	0.521 (13.23)	1.767 (44.88)	0.236 (5.99)	0.150 (3.81)	0.139 (3.53)
P	1.075 (27.31)	0.623 (15.82)	0.725 (18.42)	0.262 (6.65)	0.163 (4.14)	0.153 (3.89)
Q	1.450 (36.83)	0.623 (15.82)	1.100 (27.94)	0.262 (6.65)	0.163 (4.14)	0.153 (3.89)
R	1.825 (46.36)	0.623 (15.82)	1.475 (37.47)	0.262 (6.65)	0.163 (4.14)	0.153 (3.89)
S	2.200 (55.88)	0.623 (15.82)	1.850 (46.99)	0.262 (6.65)	0.163 (4.14)	0.153 (3.89)
T	2.575 (65.41)	0.623 (15.82)	2.225 (56.52)	0.262 (6.65)	0.163 (4.14)	0.153 (3.89)
U	2.575 (65.41)	0.998 (25.35)	2.225 (56.52)	0.262 (6.65)	0.163 (4.14)	0.153 (3.89)