

SERIES™ 794 VersaLink



Series 794 precision-machined, shielded rectangular with VersaLink™ contact technology

A rugged, versatile, multi-port, multi-gigabit connector, the Series 794 with shielded VersaLink twinax contact technology is an ideal rectangular solution for 10Gb Ethernet, USB 3.0, HDMI, DisplayPort and SATA applications. The series is offered in layouts from 1 to 36 high-speed VersaLink modules or in hybrid size #22D contact layouts with one to eight VersaLink shielded twinax pairs. Panel mount options include float mounts, O-rings, EMI springs, and guide pins. Series 794 VersaLink shells are precision-machined aluminum and fully shielded for optimal electromagnetic compatibility.

Dual-lobe scoop-proof shells prevent mating damage

Available with optional polarizing keys

Ideal for blind-mate applications

About Series 794



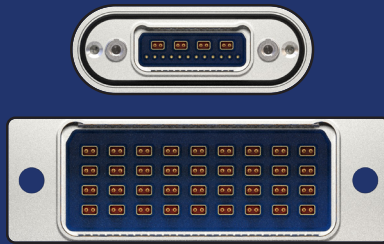
The Series 794 brings high-speed board-to-wire capability to the Glenair Series 79 family of ultraminiature rectangular connectors. The Series 794 is intended for avionics and aerospace equipment exposed to high-vibration and hostile environments.

The 794 supports VersaLink High-Speed twinax contact modules for 40Gb Ethernet, USB 3.2, HDMI, and other protocols.

Machined aluminum alloy shells feature dual lobes for polarization. Pin contacts are recessed to prevent scooping damage. Crimp contacts conform to M39029 requirements and are rear release.

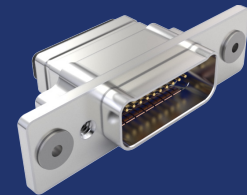
EMI grounding fingers in the receptacle minimize EMI. Fluorosilicone face seals and wire grommets protect from moisture and contamination. Panel mount versions are available with an O-ring—or for improved panel bonding—a metal spring.

Board mount straight terminals versions available.



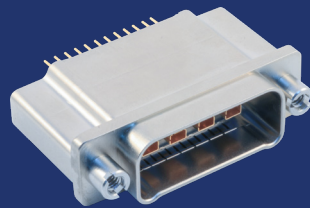
VersaLink twinax

Connectors are available in two layout configurations: VersaLink twinax for a single high-speed wire pair or combo VersaLink and discrete #22HD contacts. The Series 794 Size U with 36 ports is the largest connector in the series.



Blind-Mate Accommodation

Panel mount connectors have threaded mounting holes for easy installation, as well as available with guide pins and float mounts for blind-mate applications.



PCB Connectors

Series 794 PCB Plug or Receptacle connectors have straight PC tails. Contacts are non-removable and are epoxy sealed.



Cable Connectors

VersaLink contacts snap into Series 794 cable connectors and are easily removed with a metal removal tool.

PANEL-MOUNTED CONNECTOR INTERFACE OPTIONS

Environmental O-ring sealing and gold-plated panel spring options are available for Series 794 connectors with panel mount flanges. The spring provides improved electrical bonding. O-ring seal delivers IP67 environmental protection

Supported Networking Protocols

10Gb Ethernet
40Gb Ethernet

Supported Peripheral and Display Protocols

DVI (Digital Visual Interface)
HDMI 2.1 (High-Definition Multimedia Interface)
DisplayPort 2.0
SATA 3 (Serial AT Attachment)
USB 3.0 (Universal Serial Bus)
USB 3.1 Type C (Universal Serial Bus)
USB 3.2 (Universal Serial Bus)
USB4 (Universal Serial Bus)
PCIe 4 (Peripheral Component Interconnect)