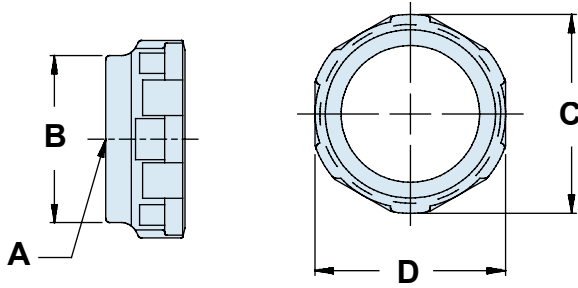


Table I Front End Dimensional Details

**NOTES:**

1. Connector shell size designations within □ are for reference only; do not use in part numbers.
2. Metric dimensions (mm) are in parentheses and are for reference only. (1 inch = 25.4 mm)
3. Consult factory for accessory interface data not listed.
4. Use Glenair 600-091 or 600-157 tool to tighten coupling nut. Rubber jaw pliers or strap wrench may damage the parts.

SHELL SIZE FOR CONNECTOR DESIGNATOR					A THREAD REF	B DIA MAX	C DIA MAX	D FLATS REF
A	F/L	G	H	U				
-	08 □	09	-	-	7/16-28 UNEF	.59 (15.0)		
-	-	-	09 □	A	M12 x 1 - 6H	.65 (16.5)	.86 (21.8)	.75 (19.1)
08	-	-	-	-	1/2-20 UNF	.65 (16.5)		
-	-	-	-	08 □	9 □	1/2-28 UNEF	.65 (16.5)	
03	10 □	11	-	-	9/16-24 UNEF	.72 (18.3)	.98 (24.9)	.88 (22.2)
-	-	-	11 □	B	M15 x 1 - 6H	.77 (19.6)		
10	-	-	-	-	5/8-24 UNEF	.77 (19.6)		
-	-	-	-	10 □	11 □	5/8-28 UN	.77 (19.6)	
-	12 □	13	-	-	11/16-24 UNEF	.84 (21.3)	1.16 (29.4)	1.00 (25.4)
-	-	-	13 □	C	M18 x 1 - 6H	.89 (22.6)		
12	7	-	11 □	A	3/4-20 UNEF	.91 (23.1)		
-	-	-	-	12 □	13 □	3/4-28 UNS	.91 (23.1)	
-	14 □	15	-	-	13/16-20 UNEF	.97 (24.6)	1.28 (32.5)	1.13 (28.6)
-	-	-	15 □	D	M22 x 1 - 6H	1.03 (26.2)		
14	12	-	13 □	B	7/8-20 UNEF	1.03 (26.2)		
-	-	-	-	14 □	15 □	7/8-28 UN	1.03 (26.2)	
-	16 □	17	-	-	15/16-20 UNEF	1.09 (27.7)	1.41 (35.7)	1.25 (31.8)
-	-	-	17 □	E	M25 x 1 - 6H	1.15 (29.2)		
16	19	-	15 □	C	1-20 UNEF	1.15 (29.2)		
-	-	-	-	16 □	17 □	1-28 UN	1.15 (29.2)	
18	27	18 □	19	-	1-1/16-18 UNEF	1.22 (31.0)	1.52 (38.5)	1.38 (35.1)
-	-	-	19 □	F	M28 x 1 - 6H	1.28 (32.5)		
-	-	-	17 □	D	1-1/8-18 UNEF	1.28 (32.5)		
-	-	-	-	18 □	19 □	1-1/8-28 UN	1.28 (32.5)	
20	37	20 □	21	-	1-3/16-18 UNEF	1.34 (34.0)	1.64 (41.7)	1.50 (38.1)
-	-	-	21 □	G	M31 x 1 - 6H	1.41 (35.8)		
-	-	19 □	E	-	1-1/4-18 UNEF	1.41 (35.8)		
-	-	-	-	20 □	21 □	1-1/4-28 UN	1.41 (35.8)	
22	22 □	23	-	-	1-5/16-18 UNEF	1.47 (37.3)	1.77 (44.9)	1.63 (41.3)
-	-	-	23 □	H	M34 x 1 - 6H	1.53 (38.9)		
-	-	-	-	22 □	23 □	1-3/8-28 UN	1.53 (38.9)	
24	24 □	25	23 □	F	1-7/16-18 UNEF	1.59 (40.4)	1.89 (48.0)	1.75 (44.5)
-	-	-	25 □	J	M37 x 1 - 6H	1.66 (42.2)		
61	-	-	-	-	1-1/2-18 UNEF	1.66 (42.2)		
-	-	-	-	24 □	25 □	1-1/2-28 UN	1.66 (42.2)	2.02 (51.2)
-	-	25 □	G	-	1-9/16-18 UNEF	1.66 (42.2)		1.88 (47.6)
28	-	-	-	-	1-3/4-18 UNS	1.97 (50.0)	2.16 (54.8)	2.00 (50.8)