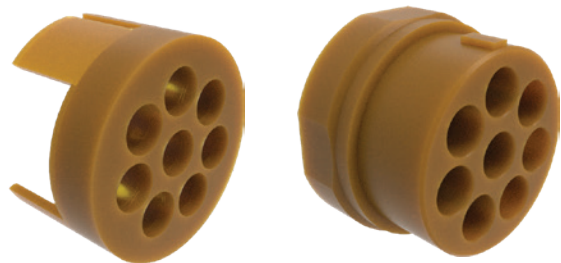


El Ochito® Test Adapters for SuperNine® Connectors

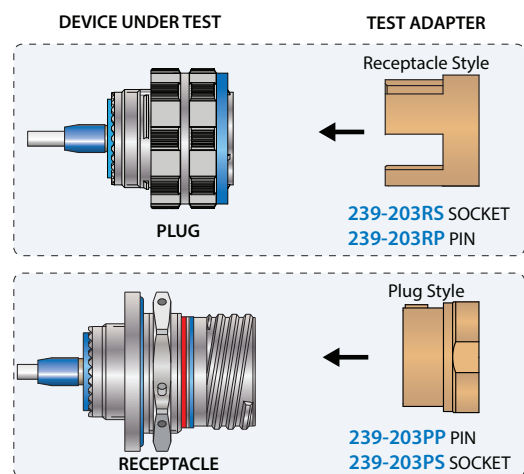


Receptacle Contact Adapter

Plug Contact Adapter

Test your system or cable while preventing damage to expensive cables with El Ochito® test adapters. These test adapters properly align test contacts without the added expense and time-consuming labor of mating connectors. Insert adapter cable into adapter then push test adapter into Device Under Test (DUT).

Note: these adapters are for testing Size 8 contacts only. Testing of other contact sizes (22, 20, 16, or 12) requires a mating connector.



Test Adapters for SuperNine® Connectors				
Sample Part Number→	239-203	-P	S	19-18
Product	239-203 = Test adapter for SuperNine with El Ochito Contacts			
Fixture Shell Style	P = Plug R = Receptacle			
Contact Gender	P = Pin S = Socket			
Insert Arrangement	9G5 ¹ , 11-1 ¹ , 13-14 ¹ , 17-2 ¹ , 17-22, 17-60, 17-75, 19-4, 19-17, 19-18, 21-75, 23-5, 23-6, 25-7, 25-8, 25-17, 25-20, 25-26, 25-41, 25-46			

Connector Compatibility

- Glenair SuperNine connectors such as 233-217, -218, -224, -225 SuperNine® connectors with size 8 data contacts

Construction

- Copper alloy retention clip, rigid dielectric and universally keyed

Notes

- 9G5, 11-1, 13-14, and 17-2 do not have the contact retention clip installed
- Retention clips are only placed in size 8 cavity of arrangements with multiple size 8 cavities
- Fixtures use SuperNine El Ochito contacts. Consult El Ochito® ordering information beginning on page 6

239-203 Plug Adapter

Shell Size	ØA
09 (A)	.650 (16.51)
11 (B)	.780 (19.81)
13 (C)	.900 (22.86)
17 (E)	1.203 (30.56)
19 (F)	1.265 (32.13)
21 (G)	1.390 (35.31)
23 (H)	1.520 (38.61)
25 (J)	1.635 (41.53)

239-203 Receptacle Adapter

Shell Size	ØB
09 (A)	.546 (13.87)
11 (B)	.674 (17.12)
13 (C)	.786 (19.96)
17 (E)	1.036 (26.31)
19 (F)	1.141 (28.98)
21 (G)	1.266 (32.16)
23 (H)	1.391 (35.33)
25 (J)	1.516 (38.51)

EL OCHITO® TEST ADAPTERS