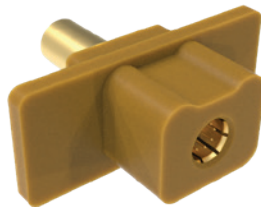


El Ochito[®] Test Adapters for Series 792 Connectors

EL OCHITO[®] TEST ADAPTERS



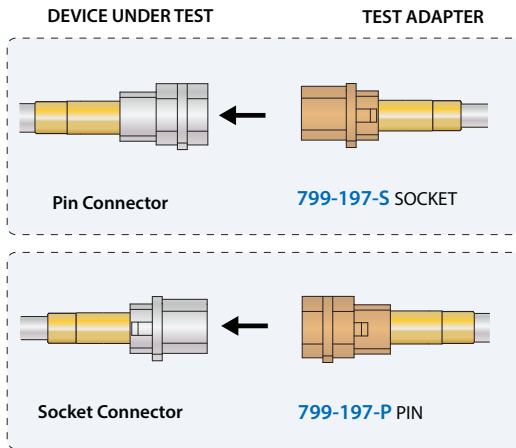
Pin Contact Adapter



Socket Contact Adapter

Test your system or cable while preventing damage to expensive cables with El Ochito[®] test adapters. These test adapters properly align test contacts without the added expense and time-consuming labor of mating connectors. Insert adapter cable into adapter then push test adapter into Device Under Test (DUT).

Note: these adapters are for testing Size 8 contacts only. Testing of other contact sizes (22, 20, 16, or 12) requires a mating connector.



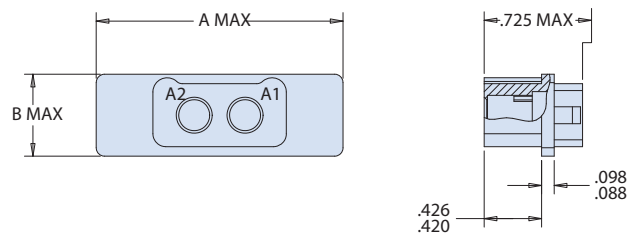
Test Adapters for Series 28 HiPer-D Connectors			
Sample Part Number	799-197	-P	B-2W2
Product	799-197 = Test adapter for Series 792 Connectors with El Ochito Contacts		
Contact Gender	P = Pin S = Socket		
Insert Arrangement	B-23W1 ¹ , C-24W2, D-27W3, E-45W3 A-3W1 ¹ , B-6W2, C-9W3, D-12W4, E-15W5, F-31W9 A-1W1 ¹ ; B-2W2; C-3W3; D-4W4; E-5W5; F-9W9		

Plug and Receptacle Adapter Dims.		
Shell Size	A Max	B Max
A	1.455 (36.96)	.635 (16.13)
B	1.830 (46.48)	.635 (16.13)
C	2.205 (56.01)	.635 (16.13)
D	2.580 (65.53)	.635 (16.13)
E	2.955 (75.06)	.635 (16.13)
F	2.955 (75.06)	.990 (25.15)

Construction
<ul style="list-style-type: none"> Material: Body: rigid dielectric Retention clip: copper alloy

Notes
1. Retention clips are only placed in size 8 cavity of arrangements with multiple size 8 cavities.
2. A-1W1, A-3W1, and B-23W1 do not have any clips installed.
3. Fixtures use Series 792 El Ochito contacts. Consult El Ochito [®] ordering information beginning on page 6

799-197-S Socket Contact Adapter



799-197-P Pin Contact Adapter

