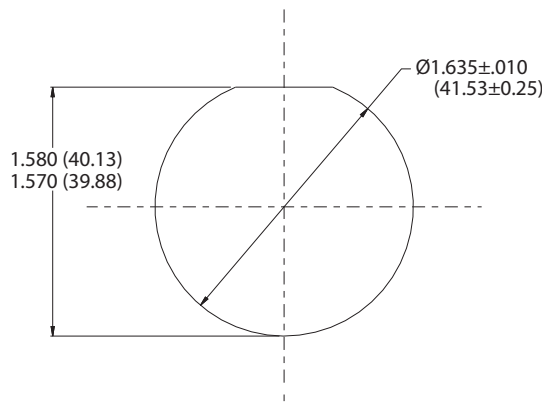


Pierside Fiber Optic Connectors IAW NAVSEA 737971 / 737972  
180-157 (08), (13) Jam nut receptacles

NAVSEA / Underwater Fiber Optics

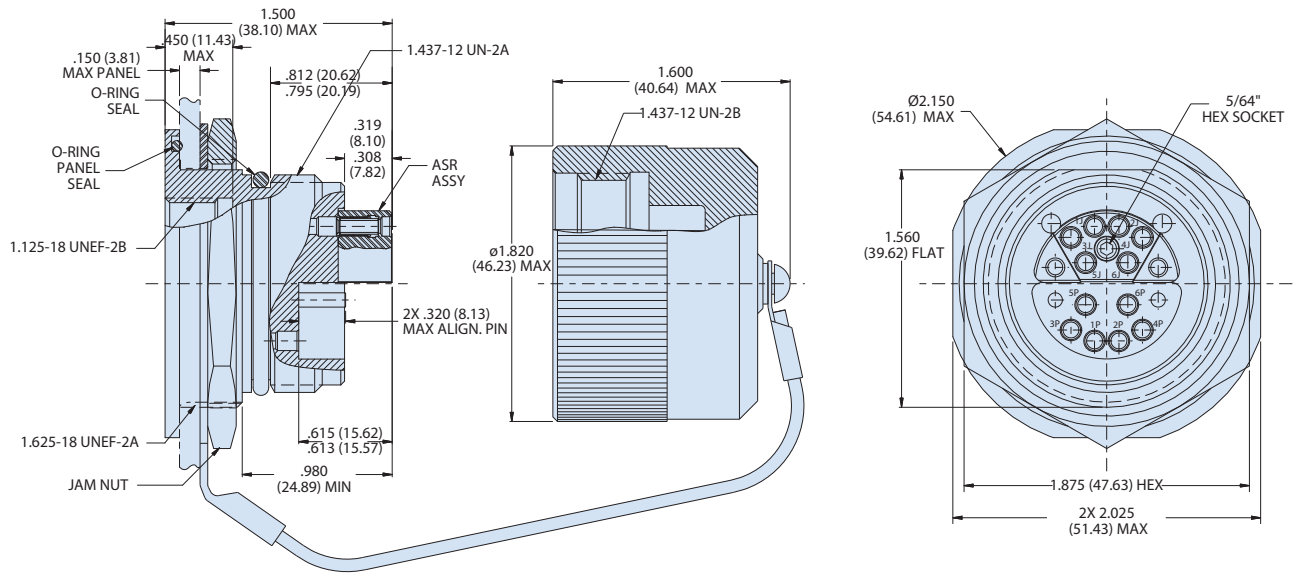
HOW TO ORDER	
Sample Part Number	180-157 G2 08 -12 E 1 F 1 A
Basic Number	Pierside Fiber Optic jam nut receptacle
Material/Finish Code	G2 = Aluminum alloy, hard anodize, gray MT = Aluminum alloy, nickel-PTFE, gray
Connector Type	08 = jam nut receptacle 13 = jam nut receptacle, extended
Number Of Connector Channels	12
Sleeve Retention	N = Normal E = Enhanced
Insert Material/Finish Dash No.	1 = Aluminum alloy, anodize 2 = Aluminum alloy, electroless nickel
Dust Cover Dash Sym	F = Female N = None
O-Ring Seal Material	1 = Fluorosilicone, non-conductive 2 = Fluorosilicone, conductive
Cable Diameter Range for Extended Receptacle	A = .200-.350 (5.08- 8.89) B = .280-.470 (7.11-11.94) C = .350-.630 (8.89-16.00) Omit for 08 non-backshell version

- MATERIAL AND FINISH**
- Internal hardware: Al alloy/chem film
  - Misc. Hardware: stainless steel/passivate
  - Alignment sleeves: zirconia ceramic
  - Sleeve retainers: BeCu alloy/nickel
  - Lanyard: stainless steel/coated
  - Cable bend restrictor: nylon

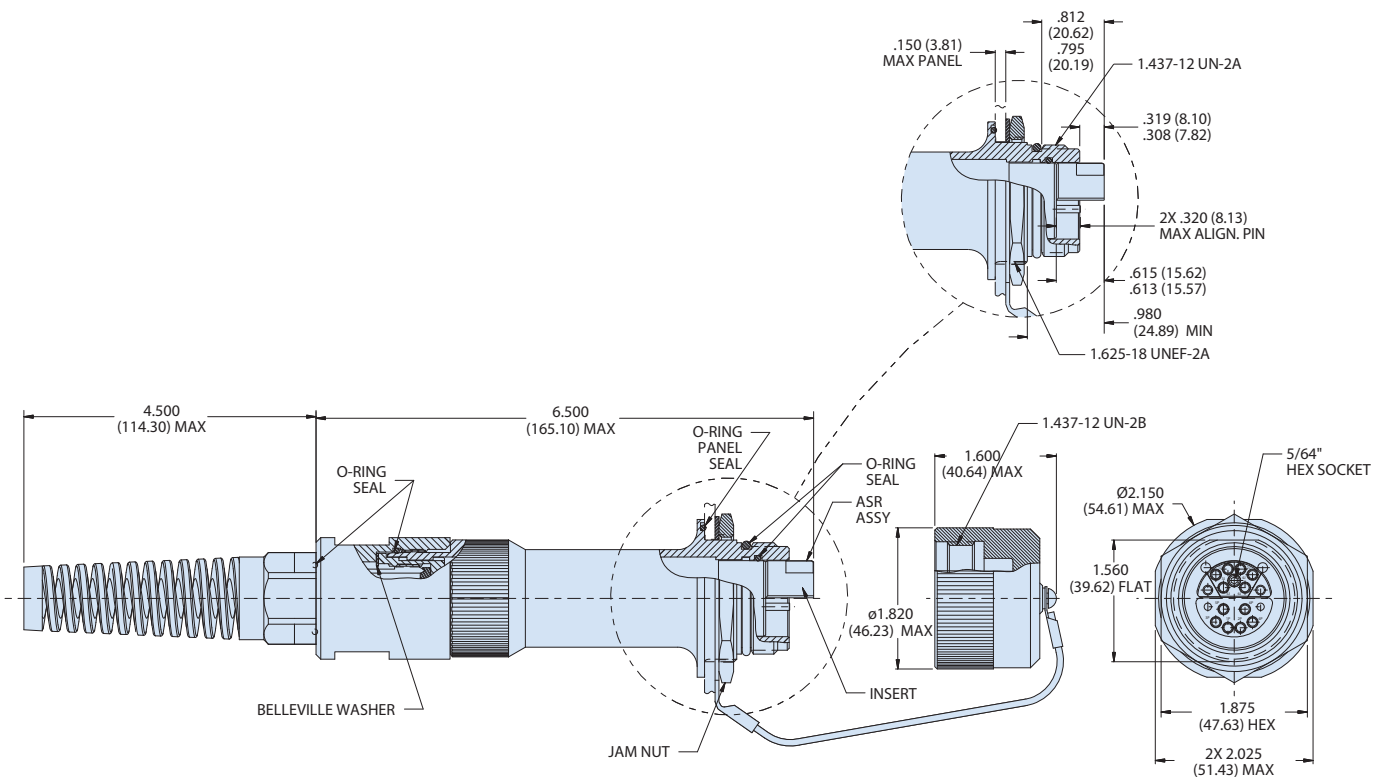


Recommended Panel Cutout

Pierside Fiber Optic Connectors IAW NAVSEA 737971 / 737972  
 180-157 (08), (13) Jam nut receptacles



08 - Jam Nut Receptacle



13 - Jam Nut Receptacle, Extended