

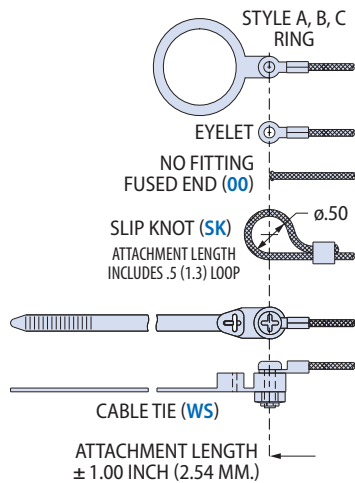
## Backshells and Accessories

### 780-002 Bean Rubber Cover for Series 970 Receptacle Connector

BACKSHELLS AND ACCESSORIES



**Neoprene, silicone or fluorosilicone.** 780-002 cover fits Series 970 PowerTrip receptacle connectors. Rugged molded rubber "Mr. Bean" protects connector from damage. Four material choices: black neoprene, carbon-filled conductive black neoprene, red silicone or blue fluorosilicone. Attach cover with nylon rope. Attachment choices include cable tie, slip knot or stainless steel ring. Non-environmental.



HOW TO ORDER						
Sample Part Number →	780-002	-22	G	6	-06	
<b>Basic Number</b>	780-002 = Bean Rubber Cover for Series 970 Receptacle Connectors					
<b>Size</b>	See Table 1 for Size Code					
<b>Attachment Type</b>	Omit for no Attachment G = Nylon Rope					
<b>Attachment Length</b>	Omit if no Attachment Length in 1 Inch Increments ("6" = six inch length)					
<b>Attachment Fitting</b>	Omit if no Attachment 00 = No Fitting See Table 2 for Attachment Fitting Codes					
<b>Material</b>	Omit for non-conductive black neoprene C = Conductive Black Neoprene F = Blue Fluorosilicone S = Red Silicone					

TABLE 1 SIZE CODE									
Shell Size	Size Code	øA		øB		C		øD	
		In.	mm.	In.	mm.	In.	mm.	In.	mm.
18	-14	1.18	30.0	.96	24.4	.63	16.0	1.68	42.7
20	-16	1.31	33.3	1.09	27.7	.63	16.0	1.81	46.0
24	-22	1.68	42.7	1.46	37.1	.63	16.0	2.31	58.7
28	-24	1.80	45.7	1.59	40.4	.69	17.5	2.43	61.7
32	-27	2.16	54.9	1.75	44.5	.69	17.5	2.64	67.1
36	-32	2.31	58.7	2.13	54.1	.69	17.5	2.98	75.7
40	-36	2.56	65.0	2.32	58.9	.69	17.5	3.21	81.5

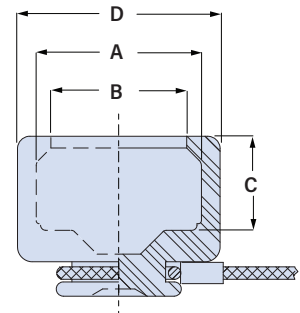


TABLE 2 ATTACHMENT RING OPTIONS							
EYELET		STYLE A RING		STYLE B RING		SPLIT RING	
Code	Eyelet I.D.	Code	Ring I.D.	Code	Ring I.D.	Code	Ring I.D.
-06	.125 (3.2)	-095	.312 (7.9)	-10	.593 (15.1)	-50	.425 (10.8)
-01	.145 (3.7)	-100	.391 (9.9)	-12	.718 (18.2)	-52	.485 (12.3)
-09	.156 (4.0)	-101	.516 (13.1)	-13	.765 (19.4)	-54	.640 (16.3)
-05	.167 (4.2)	-103	.641 (16.3)	-14	.844 (21.4)	-56	.750 (19.1)
-02	.182 (4.6)	-104	.708 (18)	-15	.890 (22.6)	-58	.890 (22.6)
-03	.191 (4.9)	-105	.766 (19.5)	-17	1.015 (25.8)	-60	1.015 (25.8)
-04	.197 (5.0)	-106	.896 (22.8)	-19	1.140 (29.0)	-62	1.095 (27.8)
-07	.218 (5.5)	-107	1.016 (25.8)	-20	1.203 (30.6)	-64	1.130 (28.7)
<b>SLIP KNOT</b>		-108	1.141 (29.0)	-21	1.265 (32.1)	-66	1.250 (31.8)
 Code -SK	-208	1.203 (30.6)	-22	1.343 (34.1)	-68	1.350 (34.3)	
	-109	1.266 (32.2)	-24	1.484 (37.7)	-70	1.375 (34.9)	
	-110	1.391 (35.3)	-27	1.640 (41.7)	-72	1.485 (37.7)	
 Code -WS Black 6/6 nylon cable tie	-111	1.521 (38.6)	-29	1.765 (44.8)	-74	1.625 (41.3)	
	-112	1.641 (41.7)	-30	1.890 (48.0)	-76	1.750 (44.5)	
	-113	1.766 (44.9)	-31	1.953 (49.6)	-80	1.980 (50.3)	
	-114	1.891 (48.0)	-33	2.077 (52.8)	-84	2.235 (56.8)	
	-115	2.078 (52.8)	-36	2.187 (55.5)	-86	2.310 (58.7)	
	-116	2.406 (61.1)	-40	2.406 (61.1)	-88	2.475 (62.9)	
	-117	2.510 (63.8)	-44	2.656 (67.5)	-90	2.655 (67.4)	