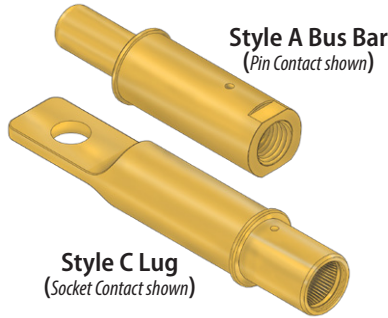


Contacts, Tools and Accessories

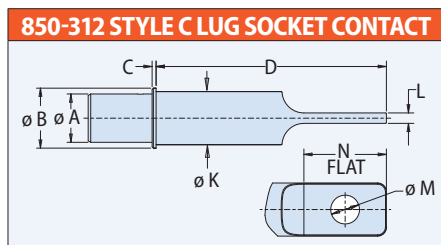
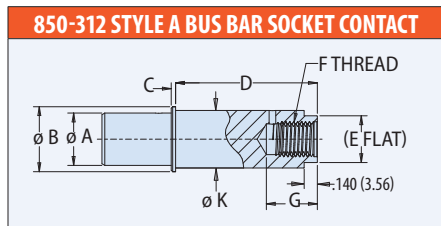
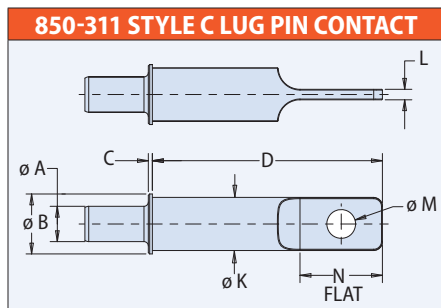
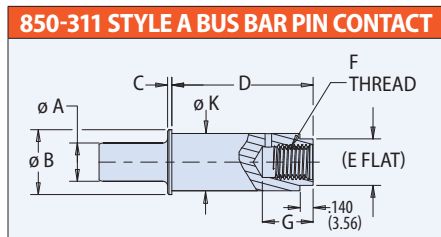
850-311, 850-312 Bus Bar/Lug Contact

CONTACTS AND TOOLS



850-311/312 contacts are used to attach PowerTrip connectors directly to bus bars and jumpers. Two contact types: Style A has internal thread, style C has lug. Contacts are compatible with Series 970 PowerTrip connectors. Contacts snap into connector body and can be removed using standard Series 970 insertion/extraction tools. High conductivity copper alloy, gold or silver plated.

- Contacts for Series 970 PowerTrip connectors
- (2) styles: lug and bus bar
- High conductivity copper alloy
- LouverBand socket contacts
- Gold or silver plating



STYLE A SUGGESTED HARDWARE TORQUE

Thread Size	Torque (IN-LB)
5/16-24 UNF	90-140
10-32 UNF	20-29
8-36 UNF	11-19

BUS BAR/LUG CONTACT PART NUMBERS

Termination Style	Size	Silver Plating	Gold Plating
A Bus Bar Internal Thread	Pin		
	8	850-311-8-A-1	850-311-8-A-2
	4	850-311-4-A-1	850-311-4-A-2
	0	850-311-0-A-1	850-311-0-A-2
C Lug	Skt		
	8	850-312-8-A-1	850-312-8-A-2
	4	850-312-4-A-1	850-312-4-A-2
	0	850-312-0-A-1	850-312-0-A-2
Pin	8	850-311-8-C-1	850-311-8-C-2
	4	850-311-4-C-1	850-311-4-C-2
	0	850-311-0-C-1	850-311-0-C-2
	00	850-311-00-C-1	850-311-00-C-2
Skt	8	850-312-8-C-1	850-312-8-C-2
	4	850-312-4-C-1	850-312-4-C-2
	0	850-312-0-C-1	850-312-0-C-2
	00	850-312-00-C-1	850-312-00-C-2

DIMENSIONS

Contact Size	ø A		ø B	C	D		E Flat	F Thread UNF-2B	G	ø K	L	ø M	N Flat
	850-311 Pin	850-312 Skt			Style A	Style C							
00	.406 (10.31)	.554 (14.07)	.69 (17.53)	.046 (1.17)	1.500 (38.10)	2.640 (67.05)	.500 (12.7)	5/16-24	.539 (13.69)	.609 (15.47)	.120 (3.05)	.330 (8.38)	.946 (24.03)
0	.357 (9.07)	.517 (13.13)	.61 (15.49)	.046 (1.17)	1.376 (34.95)	2.406 (61.11)	.500 (12.7)	5/16-24	.539 (13.69)	.563 (13.69)	.115 (2.92)	.330 (8.38)	.836 (21.23)
4	.225 (5.72)	.335 (8.51)	.42 (10.67)	.046 (1.17)	1.376 (34.95)	2.122 (53.90)	.3125 (7.94)	10-32	.460 (11.68)	.386 (9.80)	.085 (2.16)	.198 (5.03)	.552 (14.02)
8	.142 (3.61)	.250 (6.35)	.31 (7.87)	.031 (0.79)	1.277 (32.44)	1.889 (47.98)	.250 (6.35)	8-36	.407 (10.34)	.276 (7.01)	.075 (1.91)	.173 (4.39)	.468 (11.89)

CONTACT DIMENSIONS INSTALLED IN CONNECTOR

Contact Size	Square Flange Receptacle (ref: 970-003)				Jam Nut Receptacle (ref: 970-004)			
	J1 Style A Int. Thd.		J2 Style C Lug		J1 Style A Int. Thd.		J2 Style C Lug	
	In.	mm.	In.	mm.	In.	mm.	In.	mm.
00	1.356	34.4	2.496	63.4	1.231	31.3	2.371	60.2
0	1.232	31.3	2.262	57.5	1.107	28.1	2.137	54.3
4	1.232	31.3	1.978	50.2	1.107	28.1	1.853	47.1
8	1.232	31.3	1.844	46.8	1.107	28.1	1.719	43.7