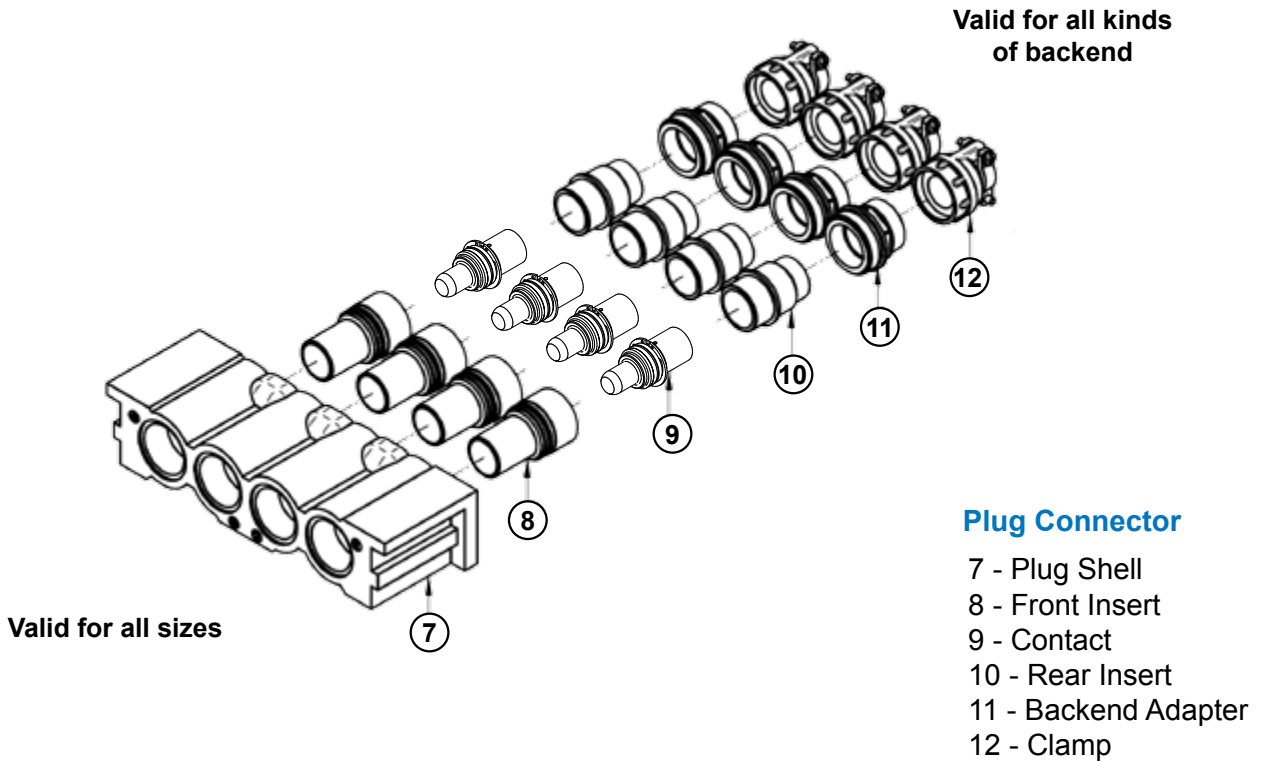


Wiring Instructions - Plug Connector - Example: Size 03



Step 1

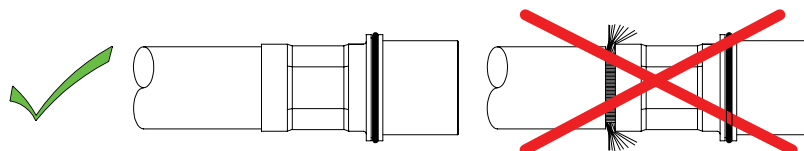
TABLE 2

Contact Type	B (mm)
1	20.0
2	20.0
3	20.0
4	21.0
5	29.0



Cut and strip the cable (See TABLE 2).

Step 2

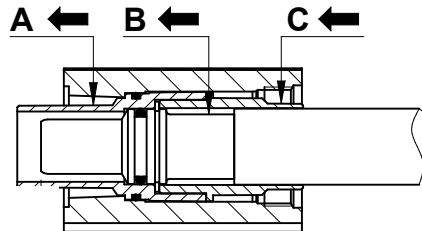


Crimp contacts (3) on conductors.

IRT Series
Rectangular Multi Pole Power Connector
 Wiring Instructions - Plug Connector - Example: Size 03

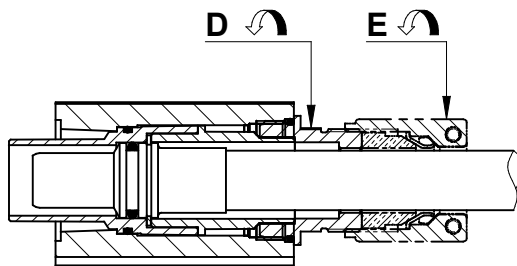


Step 3



Put the front insert (8) into the body. Insert the contact (9) crimped into the front insert (8). Install the rear insert (10).

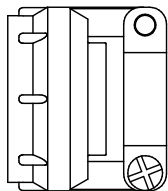
Step 4



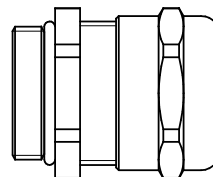
Tightening Torque	
Size	Value (Nm Max)
1	30.0
2 - 3	30.0
4	35.0
5	35.0

Screw the backend onto the rear of the receptacle and tighten.

Step 5



Tightening Torque	
Size	Value (Nm Max)
1	9.0
2 - 3	9.0
4 - 5	13.0



Tightening Torque	
Size	Value (Nm Max)
1	8.0
2 - 3	8.0
4 - 5	18.0

Screw the clamp onto the backend and tighten.
 Electrical Test: Insulation resistance 5000 Mohm (Min).
 Test Voltage: 3000 Vac according with the arrangement.