

CONTACTS

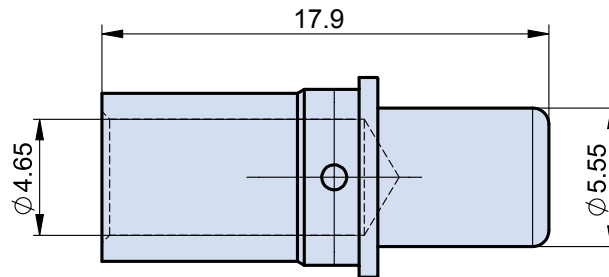
Glenair has developed new high-performance contacts for high-voltage / high-temperature applications made from high electrical conductivity copper alloy with outstanding mechanical performance up to 260°C (excursions). Special heavy gold plating resists corrosion, improves mating cycle durability, and contributes to high-temperature application requirements. Contacts are terminated to wire using precision crimp tools, and are snapped into place by hand or with a handheld insertion tool. Damaged or miswired contacts may be removed from the connector using standard extraction tools.

PIN CONTACT

High temperature pin contact, gold plated. Terminate to wire with standard crimp tools. IAW SAE AS39029.



Contact Type	Conductor Size	Part Number
Pin	#8	10-13033-102-8PG122



SOCKET CONTACT

High temperature socket contact, gold plated, passivated CRES hood. Terminate to wire with standard crimp tools. IAW SAE AS39029.



Contact Type	Conductor Size	Part Number
Socket	#8	10-13033-103-8SG122-H

