



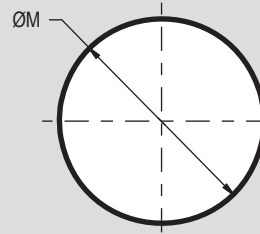
RJ45 ETHERNET, USB, HDMI, AND DISPLAY PORT Introduction and Technical Reference



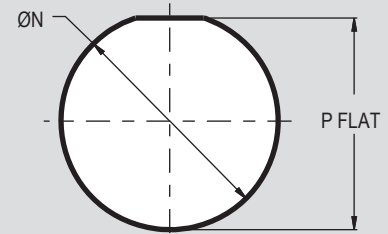
Recommended panel cutouts for MIL-DTL-28840 type connectors

MIL-DTL-28840 TYPE RJ12 PANEL CUTOUTS FOR SHELL SIZE 15 AND 17

Recommended Panel Cutouts			
Shell Size	ØM	ØN	P Flat
15	1.124 (28.55)	1.203 (30.56)	1.165 (29.59)
		1.193 (30.30)	1.155 (29.34)
17	1.187 (30.15)	1.265 (32.13)	1.228 (31.19)
		1.255 (31.88)	1.218 (30.94)



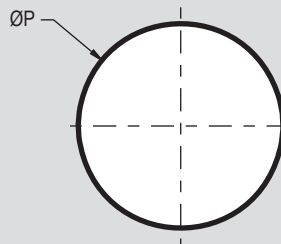
WALL MOUNT RECEPTACLE
MAX PANEL THICKNESS
.188 (4.78)



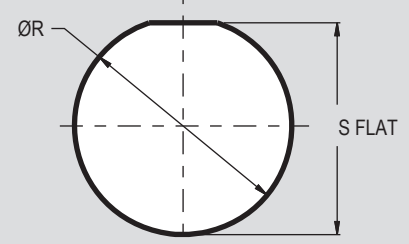
REAR PANEL MOUNT
JAM NUT RECEPTACLE
MAX PANEL THICKNESS
.188 (4.78)

MIL-DTL-28840 TYPE RJ45 PANEL CUTOUTS FOR SHELL SIZE 17 AND 19

Panel Cutouts			
Shell Size	ØP	ØR	S Flat
17	1.187 (30.15)	1.265 (32.13)	1.228 (31.19)
		1.255 (31.88)	1.218 (30.94)
19	1.374 (34.90)	1.453 (36.91)	1.415 (35.94)
		1.443 (36.65)	1.405 (35.69)

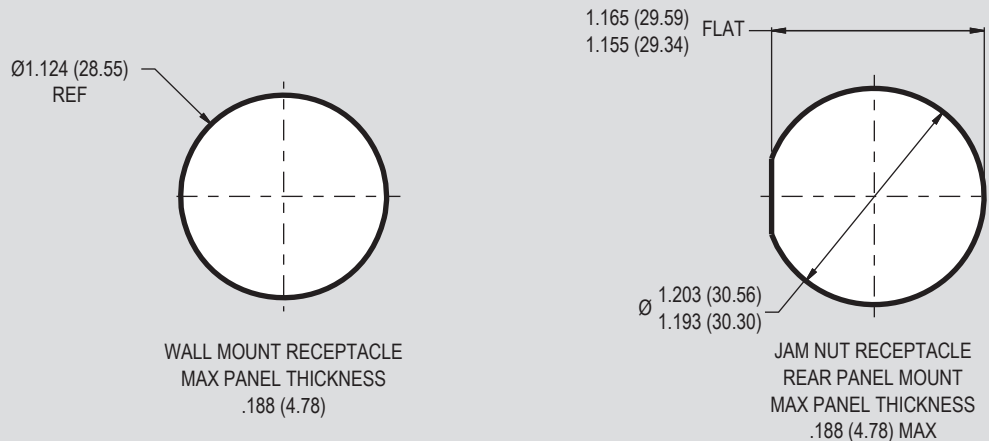


WALL MOUNT RECEPTACLE
MAX PANEL THICKNESS
.188 (4.78)



REAR PANEL MOUNT
JAM NUT RECEPTACLE
MAX PANEL THICKNESS
.188 (4.78)

MIL-DTL-28840 TYPE USB PANEL CUTOUTS FOR SHELL SIZE 15



WALL MOUNT RECEPTACLE
MAX PANEL THICKNESS
.188 (4.78)

JAM NUT RECEPTACLE
REAR PANEL MOUNT
MAX PANEL THICKNESS
.188 (4.78) MAX